

# **Citizen Device Types for SAP<sup>®</sup> Smart Forms<sup>™</sup>**

Setup Guide

v1.0

## Copyrights

CITIZEN is a registered trademark of Citizen Holdings Co., Ltd.  
SAP, Smart Forms are registered trademarks of SAP AG.

All other trademarks are the property of their respective owners.  
Specifications subject to change without notice.

Copyright © 2015, CITIZEN SYSTEMS JAPAN CO., LTD. All rights reserved.

[www.citizen-systems.co.jp](http://www.citizen-systems.co.jp)

## Revision History

Version	Date	Note
1.0	Oct. 2015	First publication

## CONTENTS

Overview .....	4
Supported SAP Systems .....	4
Citizen Device Types .....	4
Supported Barcode Symbologies.....	5
Importing Citizen Device Types to SAP .....	6
Creating a new Output Device .....	7
Downloading Font to Printer .....	10

## Overview

As a member of the SAP Printer Vendor Program, Citizen Systems offers device types for SAP Smart Forms. This setup guide is to help systems integrators install and configure Citizen device types into the SAP system to work with the Citizen printers. For more information about Smart Forms, please read SAP note 168368.

## Supported SAP Systems

The device type selection method in transaction SPAD described in this document is available on 6.20 systems and above with the following Support Packages:

SAP\_BASIS Release 6.20: SAPKB62063

SAP\_BASIS Release 6.40: SAPKB64021

SAP\_BASIS Release 7.00: SAPKB70014

SAP\_BASIS Release 7.10: SAPKB71004

For details, please read SAP note 1036961.

## Citizen Device Types

Citizen device types are available at: <http://www.citizen-systems.co.jp/english/>

**YCSZBI2** - Code Page 850(Citizen Triumvirate), 203dpi

**YCSZBI2** - UTF-8(Downloaded TrueType font\*), 203dpi

Supported printer models: CL-E720DTZ, CL-E720Z, CL-S321Z, CL-S400DTZ, CL-S521Z,  
CL-S621Z, CL-S700DTZ, CL-S700Z, CL-S6621Z

**YCSZBI3** - Code Page 850(Citizen Triumvirate), 300dpi

**YCSZBI3** - UTF-8(Downloaded TrueType font\*), 300dpi

Supported printer models: CL-E730Z, CL-S331Z, CL-S531Z, CL-S631Z, CL-S703Z

### \*TrueType Font Downloading / Licensing / Disclaimer

End users may download their TrueType font to their printers prior to printing. For more information about font downloading, please see "Downloading Font to Printer" in this document.

It is the responsibility of the end users to ensure that they comply with the font licensing requirements provided by the owners of such fonts. Any fonts stored in the Flash memory of Citizen printers may require licensing from the font vendor. Please note that Citizen do not provide any TrueType fonts.

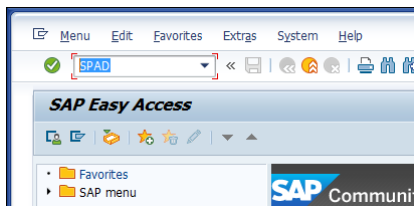
## Supported Barcode Symbolologies

The barcode symbolologies supported by the Citizen device types are as follows:

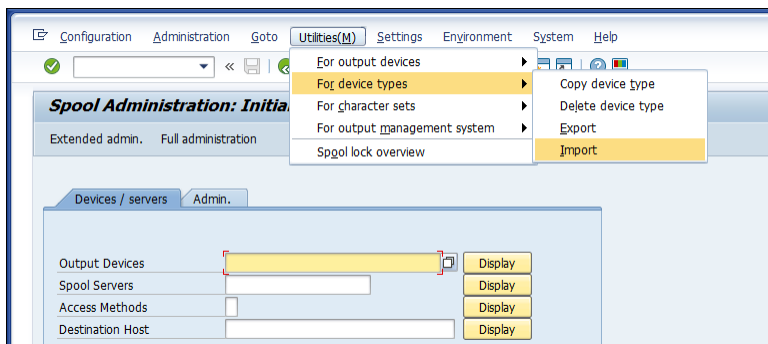
Barcode	Prefix	Suffix	Note		Approx. Hight (203dpi)
BC_93	SBP03	SBS00	Code 93		13mm
BC_C128B	SBP08	SBS00	Code 128	Code B, Normal Alpha/Numeric	13mm
BC_CD39	SBP01	SBS00	Code 39		13mm
BC_CD39C	SBP02	SBS00	Code 39	Mod-43 Check Digit	13mm
BC_EAN13	SBP05	SBS00	EAN-13	with human readable text	13mm
BC_EAN8	SBP04	SBS00	EAN-8	with human readable text	13mm
BC_EANH	SBP16	SBS00	EAN-128		13mm
BC_I25	SBP07	SBS00	ITF		13mm
BC_I25C	SBP06	SBS00	ITF	Mod-10	13mm
BC_PSN11	SBP15	SBS00	POSTNET	11 digit	3mm
BC_PSN5	SBP09	SBS00	POSTNET	5 digit	3mm
BC_PSN9	SBP10	SBS00	POSTNET	9 digit	3mm
C128A_00	SBP11	SBS00	Code 128	Code A, Numeric Pairs give Alpha/Numeric	5mm
C128A_01	SBP19	SBS00	Code 128	90CCW, Code A, Numeric Pairs give Alpha/Numeric	5mm
C128B_00	SBP12	SBS00	Code 128	Code B, Normal Alpha/Numeric	5mm
C128B_01	SBP20	SBS00	Code 128	90CCW, Code B, Normal Alpha/Numeric	5mm
CD39C_00	SBP14	SBS00	Code 39	Mod-43 Check Digit	5mm
CD39C_01	SBP18	SBS00	Code 39	90CCW, Mod-43 Check Digit	5mm
CD39__00	SBP13	SBS00	Code 39		5mm
CD39__01	SBP17	SBS00	Code 39	90CCW	5mm

## Importing Citizen Device Types to SAP

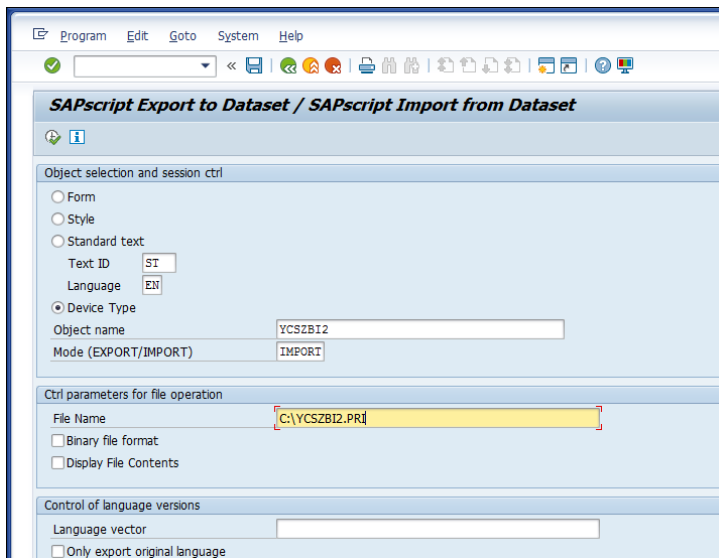
1. Go to transaction “SPAD.”



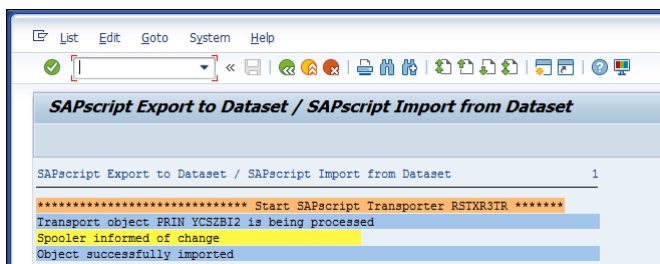
2. Open [Utilities>For device types>Import].



3. Select “Device Type”, type in “Object name” and the .PRI file location into “File Name.”



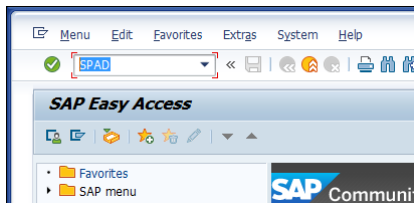
4. Click “Execute” and make sure the “Object successfully imported” page is shown.



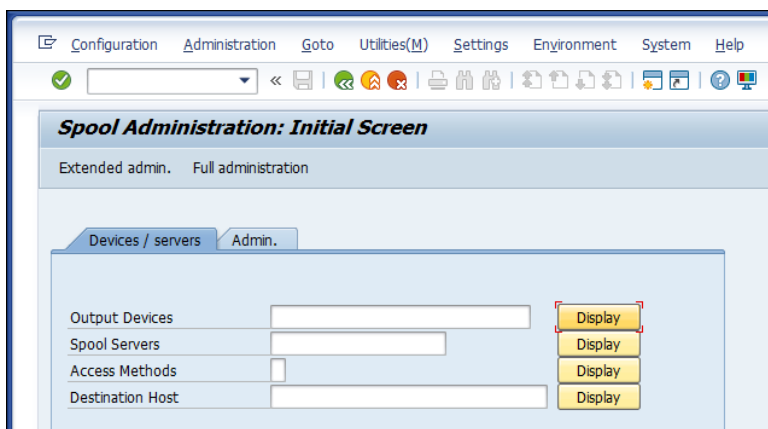
## Creating a new Output Device

To create a new Output Device,

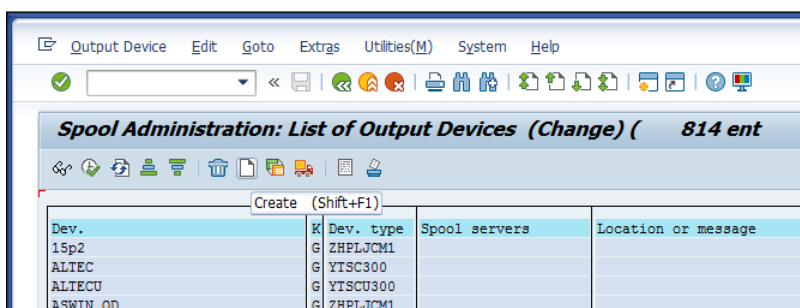
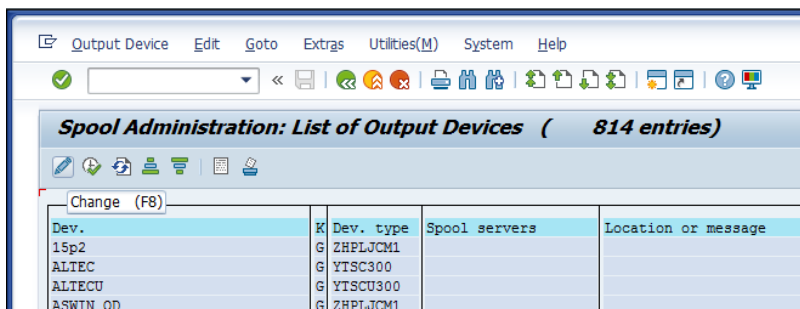
1. Go to transaction "SPAD."



2. Click "Display" button of "Output Devices."

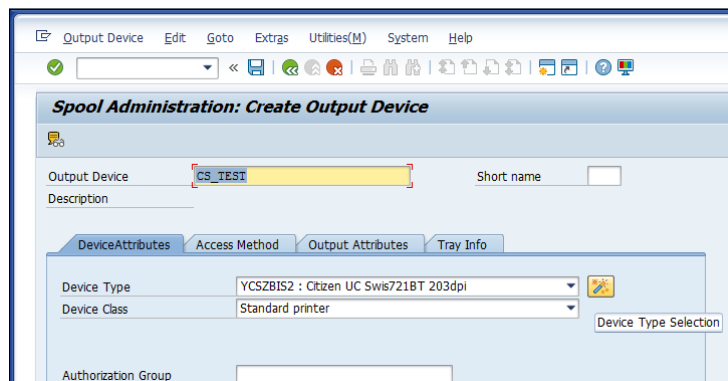


3. Click "Change" button and "Create" button.

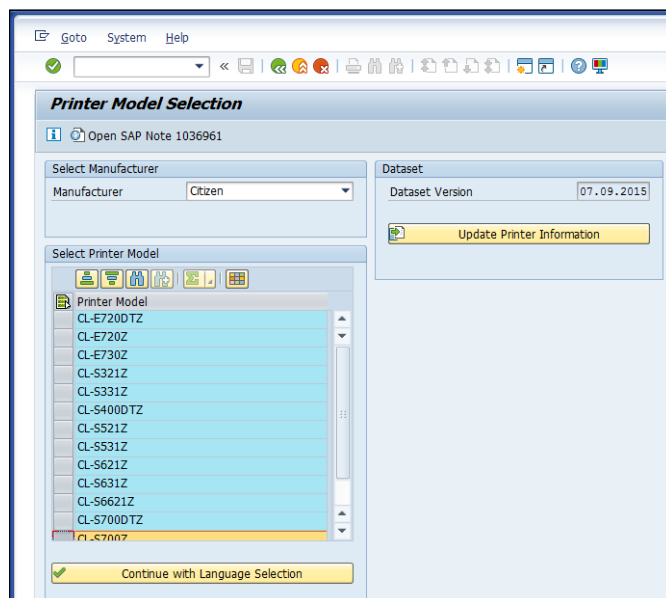




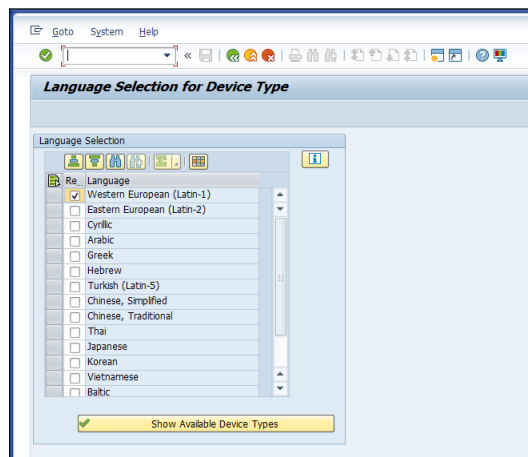
4. Type in an Output Device Name, click "Device Type Selection" button.



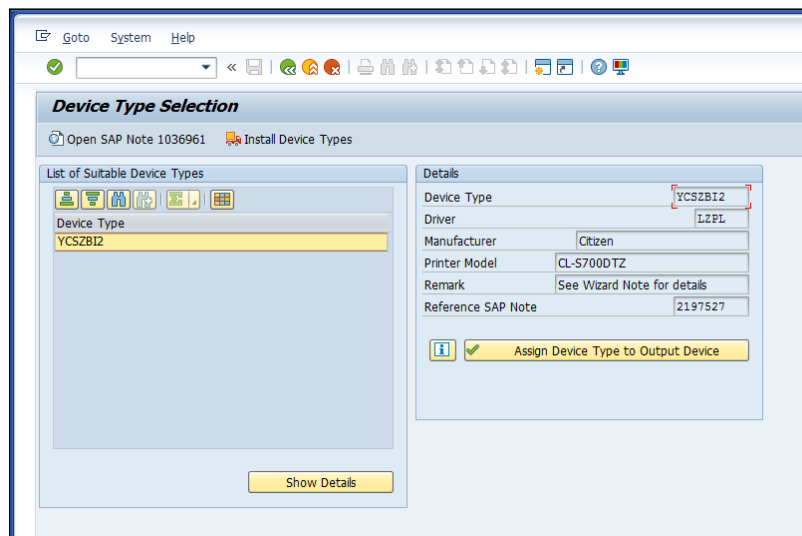
5. Select "Citizen" as "Manufacturer", highlight your printer model and click "Continue with Language Selection" button.



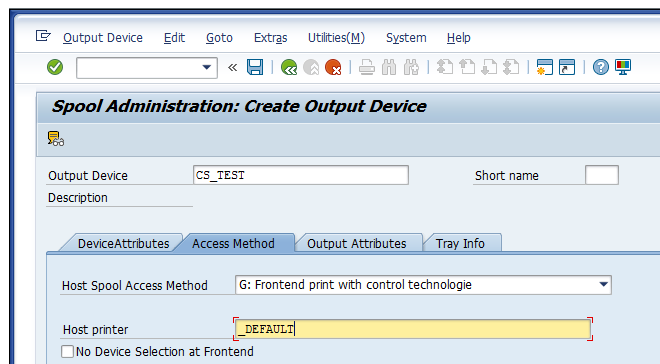
6. Select a language and click "Show Available Device Types" button.



7. Select a suitable device type and click "Assign Device Type to Output Device" button.



8. In the "Access Method" tab, "F: Printing on Front End Computer", type in "\_DEFAULT" as "Host printer."

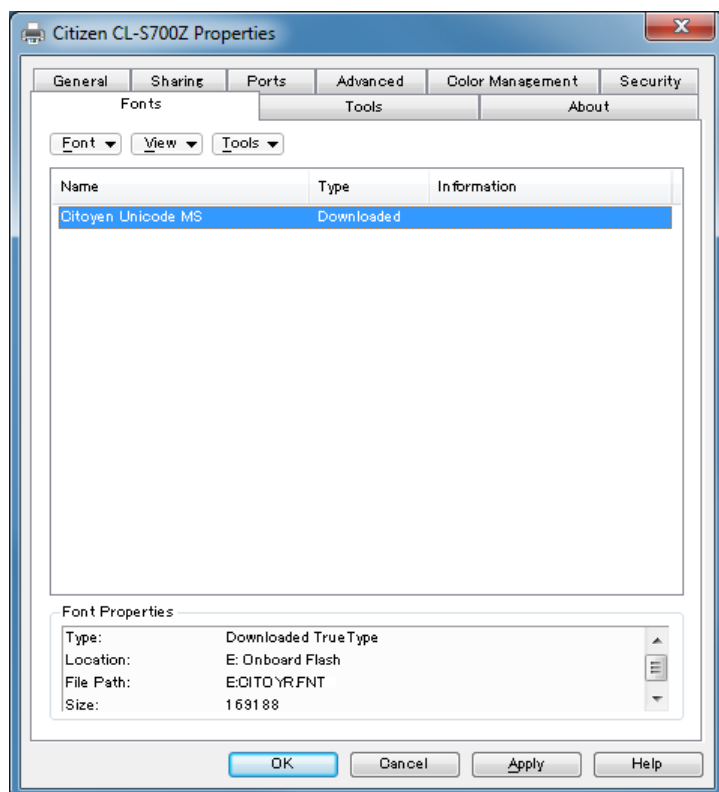
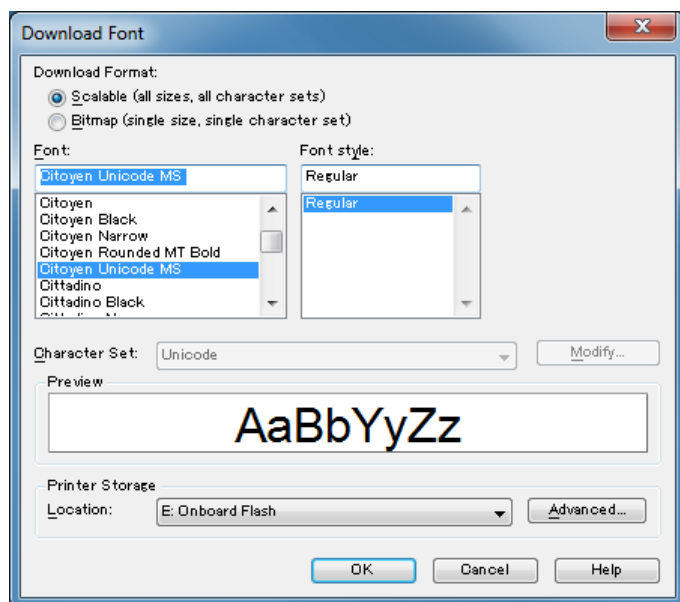


6. Click "Save."

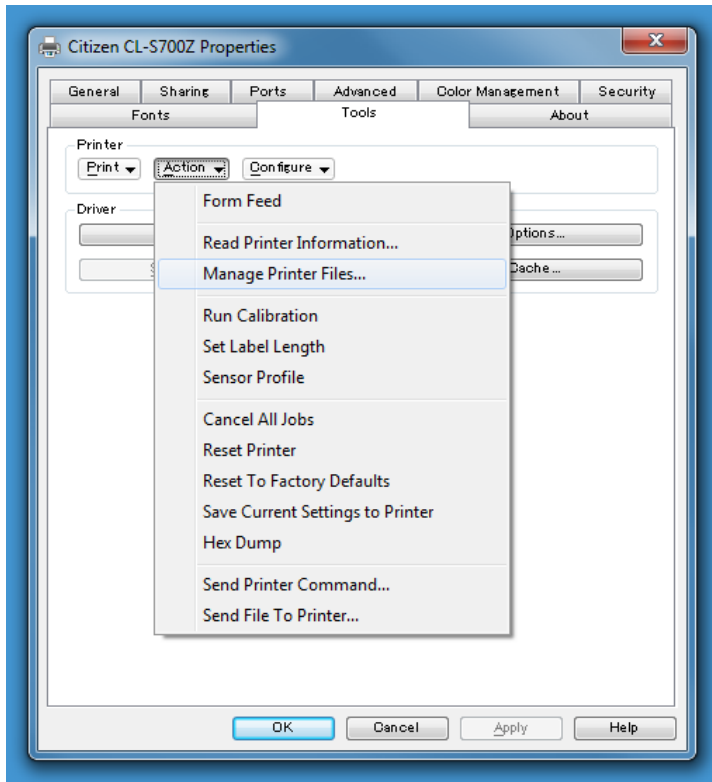
## Downloading Font to Printer

End users may download their TrueType font to their printers prior to printing. Fonts can be downloaded by the Windows driver. In case with the device types, YCSZBIS2 or YCSZBIS3, a Unicode font must be downloaded as “TT0003M\_.FNT” into E: (non-volatile flash ROM).

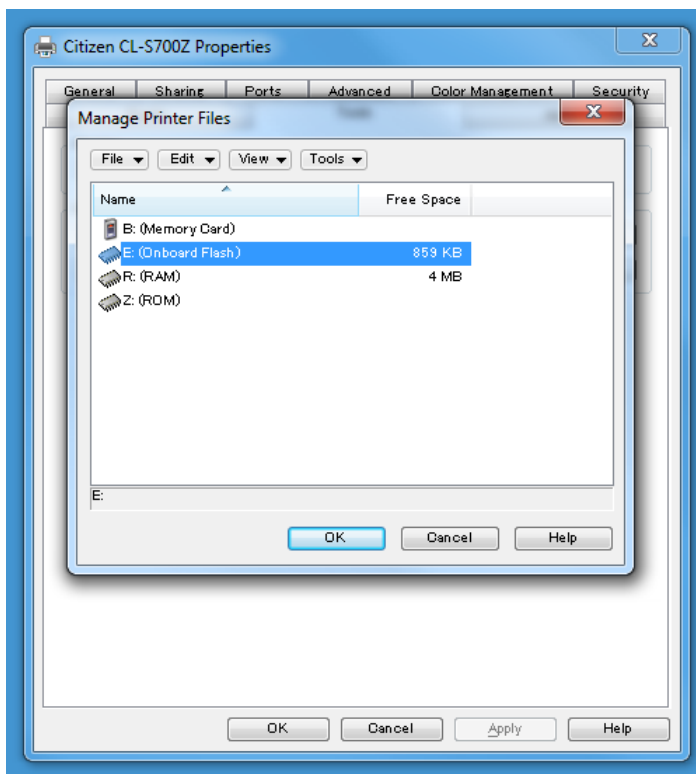
1. Open the Windows driver, [Printer Properties>Fonts>Font>Download Font].
2. Highlight a Unicode font, select the location “E: Onboard Flash” and click OK.



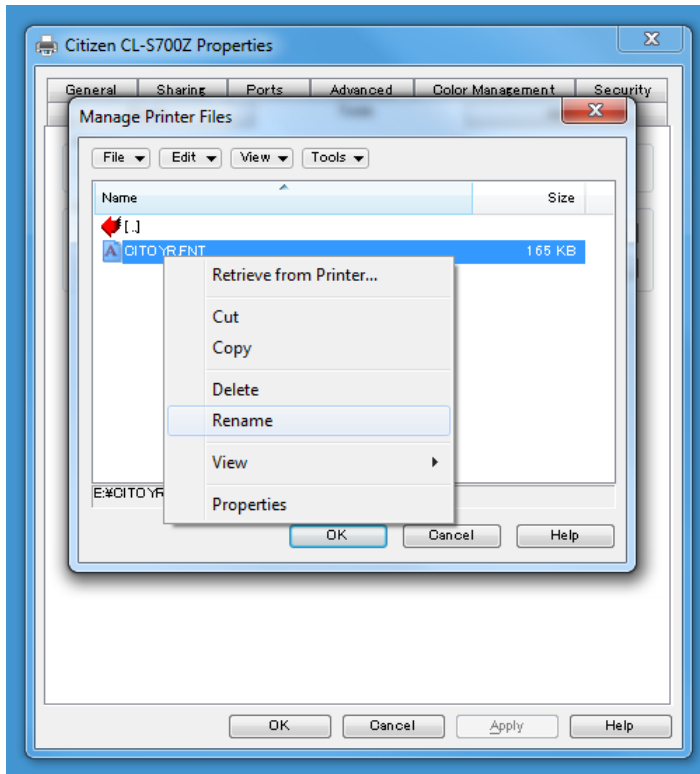
3. Go to Tools tab, [Action>Manage Printer Files].



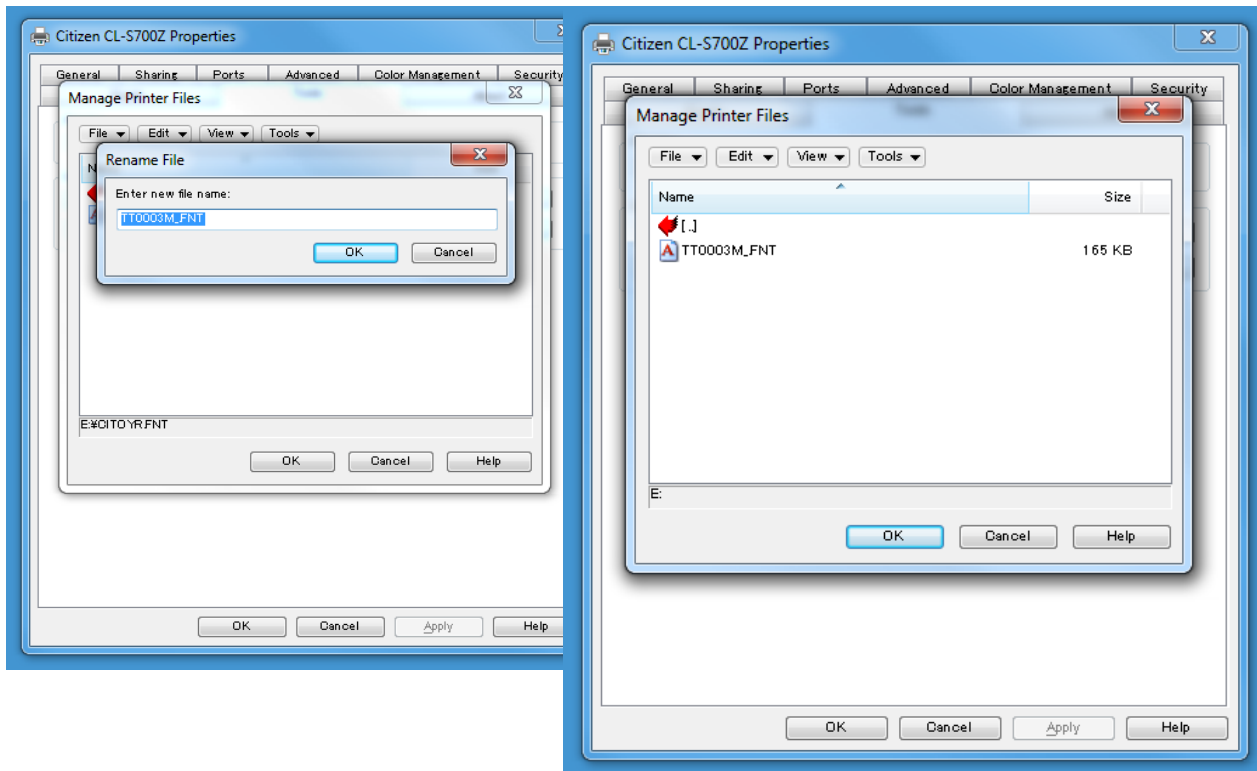
4. Double click to open “E: (Onboard Flash).”



5. Highlight and right click the downloaded font, select “Rename.”



6. Rename the font to “TT0003M\_.FNT.”



## **CITIZEN SYSTEMS AMERICA CORPORATION**

363 Van Ness Way, Suite 404  
Torrance, CA 90501 USA  
Tel: (310) 781-1460  
Fax: (310) 781-9152  
<http://www.citizen-systems.com>

## **CITIZEN SYSTEMS EUROPE GmbH**

Otto-Hirsch-Brücken 17	Park House, 643-651 Staines Road
D- 70329, Stuttgart	Feltham, Middlesex, TW14 8PA
Germany	United Kingdom
Tel: +49 (0) 711 49032-0	Tel: +44 (0) 20 8893 1900
Fax: +49 (0) 711 49032-45	Fax: +44 (0) 20 8893 0080
<a href="http://www.citizen-europe.com">http://www.citizen-europe.com</a>	

## **CITIZEN SYSTEMS JAPAN CO., LTD.**

6-1-12, Tanashi-cho, Nishi-Tokyo-shi  
Tokyo, 188-8511 Japan  
Tel: +81 (0) 42 468 4608  
Fax: +81 (0) 42 468 4996  
<http://www.citizen-systems.co.jp>