

CITIZEN

POS for .NET DRIVER 1.14

Setup Guide

For Ver. 1.14.1.5

CITIZEN SYSTEMS JAPAN CO., LTD.

Revision Record

Date	Version	Description
Jun 12, 2018	1.14.1.0	New issue
Jan 8, 2019	1.14.1.1	- CT-S751 and BC-NL3000U models were added to each item. - IF2-BT03 and IF2-BT04 interfaces were added to each item.
Jan 29, 2019	1.14.1.2	- CT-S4500 model was added to each item. - Added 65001 (UTF-8) to "Code Page".
Dec 10, 2020	1.14.1.3	- CT-D151-L, CT-E651-L and PMU3300 models were added to each item.
Apr 13, 2021	1.14.1.4	- CT-D101, CT-E301 and CT-E601 models were added to each item.
Aug 25, 2023	1.14.1.5	- CT-S801III and CT-S851III models were added to each item. (Page 6,7,9,23,76) - DSP01-LT2 and DSP02-LS2 models were added to each item. (Page 10)

Notes

1. Unauthorized use of all or any part of this document is prohibited.
2. The information in this document is subject to change without prior notice.
3. This document has been created with full attention. If, however, you find an error or question, please contact us.
4. We shall not be liable for any effect resulting from operation regardless of the above item 3.
5. If you do not agree with the above terms, you are not permitted to use this driver.

Trademark

Microsoft, Windows, Visual Studio, Visual Basic, Visual C#, and Visual C++ are registered trademarks of Microsoft Corporation in the United States and/or other countries. (Official name for Windows is Microsoft Windows Operating System.)

Company names and product names appearing on this document are trademarks and/or registered trademarks of respective companies.

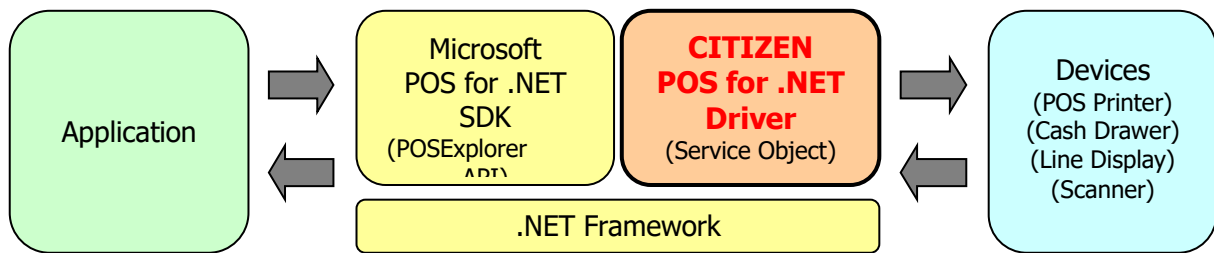
CITIZEN is a registered trademark of Citizen Watch Co., Ltd.

Table of Contents

1. Operating Environment	5
1.1. Supported operating systems	5
1.2. Supported models (printers)	6
1.3. Supported models (Peripheral devices)	10
2. Installation	12
2.1. Installation Procedure	12
2.2. Installation Structure	15
2.3. Uninstallation Procedure	16
3. POS for .NET Driver Setting Tool	18
3.1. Adding New Printer and Cash Drawer	19
3.2. Adding New Cash Drawer	31
3.3. Adding New Line Display	33
3.4. Adding New Barcode Scanner	39
3.5. Modifying Logical Device	45
3.6. Deleting Device	47
3.7. Testing Device	54
3.8. File Menu	59
3.9. Tool Menu	61
3.10. Help Menu	63
4. Printer Setting	64
4.1. CT-D101 Series	64
4.2. CT-D150 Series	65
4.3. CT-D151 Series	66
4.1. CT-E301 Series	67
4.2. CT-E351 Series	68
4.1. CT-E601 Series	69
4.2. CT-E651 Series	70
4.3. CT-S251 Series	71
4.4. CT-S281 Series	72
4.5. CT-S310II Series	73
4.6. CT-S601/651/801/851 Series	74
4.7. CT-S601II/651II/801II/851II Series	75
4.8. CT-S801III/851III Series	76
4.9. CT-S751 Series	77
4.10. CT-S2000 Series	78
4.11. CT-S4000 Series	79
4.12. CT-S4500 Series	80
4.13. PMU3300 Series	81
5. Barcode scanner Setting	82
5.1. SCN01-Z1D	82
5.2. SCN02-Z2D	82
5.3. BC-NL3000U	83

1. Operating Environment

"CITIZEN POS for .NET Driver" control the devices by using ".NET Framework".



It is necessary to set up "Microsoft POS for .NET SDK" and ".NET Framework" separately to use this driver.

1.1. Supported operating systems

This product supports the following Microsoft Windows operating systems:

- Windows 7 (32bit, 64bit)
- Windows 8.1 (32bit, 64bit)
- Windows 10 (32bit, 64bit)
- Windows 11 (64bit)

Microsoft POS for .NET SDK

Install "Microsoft Point of Service for .NET v1.14 (POS for .NET SDK)" and "Update for Microsoft Point of Service for .NET v1.14 (KB2959943)" before installing this product.

<https://www.microsoft.com/en-us/download/details.aspx?id=42081>

<https://www.microsoft.com/en-us/download/details.aspx?id=43350>

SDK contains the documents and sample codes.

.NET Framework

The following Microsoft .NET Framework is required to use this product.

- Microsoft .NET Framework 4.5 or newer

1.2. Supported models (printers)

The models supported by this product and the corresponding interfaces are as listed below.
Refer to the user's manual of the printer for the detailed functions of each model.

Series of Model	Object Model	Interface	Printer Functions
CT-D101	CT-D101	Serial, USB, Ethernet	Standard
CT-D150	CT-D150	Serial, USB, Ethernet	Standard
CT-D151	CT-D151	Serial, USB, Ethernet, Bluetooth	Standard
	CT-D151-L		Blackmark/Label paper is supported.
CT-E301	CT-E301	Serial, USB, Ethernet	Standard
CT-E351	CT-E351	Serial, USB, Ethernet	Standard
CT-E601	CT-E601	Serial, USB, Ethernet, Bluetooth	Standard
CT-E651	CT-E651	Serial, USB, Ethernet, Bluetooth	Standard
	CT-E651-L		Blackmark/Label paper is supported.
CT-S251	CT-S251	Serial, USB, Ethernet, Bluetooth	Standard
CT-S281	CT-S281/281BT/281BD	Serial, USB, Bluetooth	Standard
	CT-S281-XL-M1	Serial, USB	Blackmark paper is supported.
	CT-S281-XL		Label paper is supported.
CT-S310II	CT-S310II	Serial, USB, Ethernet	Standard
CT-S601/651/801/851	CT-S601/651/801/851	Serial, Parallel, USB, Ethernet	Standard
	CT-S801/851-M		Blackmark paper is supported.
	CT-S801-L		Label paper is supported.
CT-S601II/651II/801II/851II	CT-S601II/651II/801II/851II	Serial, Parallel, USB, Ethernet, Bluetooth	Standard
	CT-S801II/851II-M		Blackmark paper is supported.
	CT-S801II-L		Label paper is supported.
CT-S801III/851III	CT-S801III/851III	Serial, Parallel, USB, Ethernet, Bluetooth	Standard
CT-S751	CT-S751	Serial, USB, Ethernet, Bluetooth	Standard
CT-S2000	CT-S2000	Serial, Parallel, USB, Ethernet	Standard
	CT-S2000-M		Blackmark paper is supported.
	CT-S2000-L		Label paper is supported.
CT-S4000	CT-S4000	Serial, Parallel, USB, Ethernet	Standard (Paper with blackmark on front side is supported.)
	CT-S4000-M		Paper with blackmark on back side is supported.
	CT-S4000-L		Label paper is supported.
CT-S4500	CT-S4500	Serial, USB, Ethernet, Bluetooth	Standard (Blackmark/Label paper is supported.)
PMU3300	PMU3300	Serial, USB	Standard (Paper exit sensor is supported.)

USB interface connection

You need to install the printer driver to use this product via the USB interface connection. The driver to be installed varies by the USB mode setting of the printer:

- 1) When the USB mode is the Printer Class

Install the Windows driver. On the POS for .NET driver, specify the USB interface port (Virtual printer port for USB) specified on the Windows driver.

2) When the USB mode is Virtual COM

Install the Virtual COM driver. On the POS for .NET driver, specify the serial interface port specified on the Virtual COM driver.

Parallel interface connection

When the terminal and the printer are connected via the parallel interface, the installation wizard that requests the installation of the printer driver may be activated every time when the terminal is started up. You need to install the Windows driver to prevent the installation wizard from being activated.

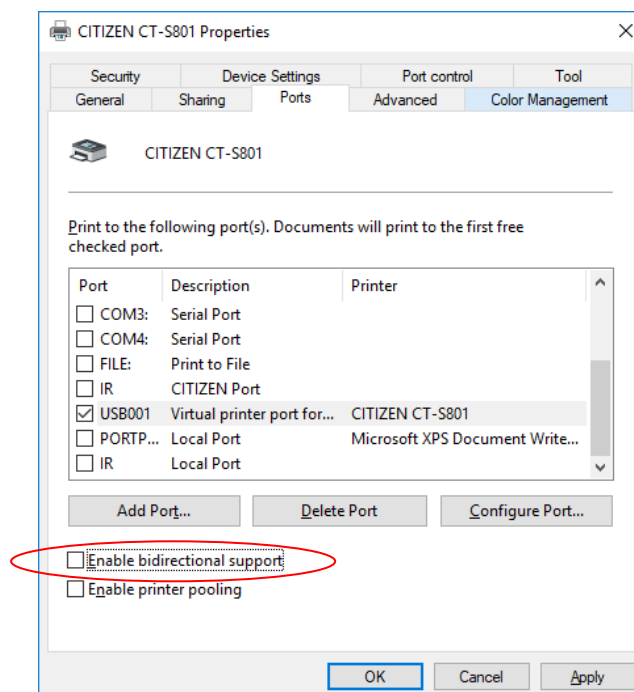
Installation of the Windows driver

The Windows drivers that support each model are as listed below. For the installation instruction of the Windows driver, refer to the "Windows Driver Guide" that is attached to the Windows driver.

Object Model	Windows Driver Name	Printer Function
CT-D101	CITIZEN CT-D101	Standard
CT-D150	CITIZEN CT-D150	Standard
CT-D151	CITIZEN CT-D151	Standard
CT-D151-L	CITIZEN CT-D151 Label	Blackmark/Label paper is supported.
CT-E301	CITIZEN CT-E301	Standard
CT-E351	CITIZEN CT-E351	Standard
CT-E601	CITIZEN CT-E601	Standard
CT-E651	CITIZEN CT-E651	Standard
CT-E651-L	CITIZEN CT-E651 Label	Blackmark/Label paper is supported.
CT-S251	CITIZEN CT-S251	Standard
CT-S281/281BT/281BD	CITIZEN CT-S281	Standard
CT-S281-XL-M1	CITIZEN CT-S281 Label	Blackmark paper is supported.
CT-S281-XL	CITIZEN CT-S281 Label	Label paper is supported.
CT-S310II	CITIZEN CT-S310II	Standard
CT-S601/651/801/851	CITIZEN CT-S601/651/801/851	Standard
CT-S801/851-M	CITIZEN CT-S801/851 Black Mark	Blackmark paper is supported.
CT-S801-L	CITIZEN CT-S801 Label	Label paper is supported.
CT-S601II/651II/801II/851II	CITIZEN CT-S601II/651II/801II/851II	Standard
CT-S801II/851II-M	CITIZEN CT-S801II/851II Black Mark	Blackmark paper is supported.
CT-S801II-L	CITIZEN CT-S801II Label	Label paper is supported.
CT-S801III/851III	CITIZEN CT-S801III/851III	Standard
CT-S751	CITIZEN CT-S751	Standard
CT-S2000	CITIZEN CT-S2000	Standard
CT-S2000-M	CITIZEN CT-S2000 Label	Blackmark paper is supported.
CT-S2000-L	CITIZEN CT-S2000 Label	Label paper is supported.
CT-S4000	CITIZEN CT-S4000	Standard (Paper with blackmark on front side is supported.)
CT-S4000-M	CITIZEN CT-S4000 Label	Paper with blackmark on back side is supported.

CT-S4000-L	CITIZEN CT-S4000 Label	Label paper is supported.
CT-S4500	CITIZEN CT-S4500	Standard (Blackmark/Label paper is supported.)
PMU3300	CITIZEN PMU3300	Standard (Paper exit sensor is supported.)

* This driver cannot be used with the status function (language monitor) of the Windows driver that shows the printer status. When using this driver, **install the Windows driver without the status function, or uncheck the "Enable bidirectional support" option under the Ports setting of the Windows driver.** (Need to reboot the computer in order for the changes to take effect.)



Installation of the USB Virtual COM driver

Install the Virtual COM driver that corresponds to each model. For the installation instruction of the Virtual COM driver, refer to the "Virtual COM Driver Installation Guide" that is attached to the Virtual COM driver. Each model and the corresponding USB virtual COM mode are as listed below:

Model Name	Corresponding Status for Virtual COM Mode	Port Name (Port Number)
CT-D101	Supported	Ctvrcom Virtual Communication Port (COM7)
CT-D150	Supported	Ctvrcom Virtual Communication Port (COM7)
CT-D151	Supported	Ctvrcom Virtual Communication Port (COM7)
CT-D151-L		
CT-E301	Supported	Ctvrcom Virtual Communication Port (COM7)
CT-E351	Supported	Ctvrcom Virtual Communication Port (COM7)
CT-E601	Supported	Ctvrcom Virtual Communication Port (COM7)
CT-E651	Supported	Ctvrcom Virtual Communication Port (COM7)
CT-E651-L		
CT-S251	Supported	Ctvrcom Virtual Communication Port (COM7)
CT-S281/281BT/281BD	Supported	Ctvrcom Virtual Communication Port (COM7)
CT-S281-XL-M1		

CT-S281-XL		
CT-S310II	Supported	Ctvrcom Virtual Communication Port (COM7)
CT-S601/651/801/851	Supported	Ctvrcom Virtual Communication Port (COM7)
CT-S801/851-M		
CT-S801-L		
CT-S601II/651II/801II/851II	Supported	Ctvrcom Virtual Communication Port (COM7)
CT-S801II/851II-M		
CT-S801II-L		
CT-S801III/851III	Supported	Ctvrcom Virtual Communication Port (COM7)
CT-S751	Supported	Ctvrcom Virtual Communication Port (COM7)
CT-S2000	Supported	Ctvrcom Virtual Communication Port (COM8)
CT-S2000-M		
CT-S2000-L		
CT-S4000	Supported	Ctvrcom Virtual Communication Port (COM8)
CT-S4000-M		
CT-S4000-L		
CT-S4500	Supported	Ctvrcom Virtual Communication Port (COM7)
PMU3300	Supported	Ctvrcom Virtual Communication Port (COM7)

1.3. Supported models (Peripheral devices)

The target models of peripheral devices of this driver are as follows.

The peripheral devices are used by connecting the Network or the Bluetooth interface with USB host function. Also, connecting to a PC directly is available.

For the detailed functions of each model, refer to the user's manual of the peripheral device.

Line display

Object Model	Function
DSP01-LT / DSP01-LT2	TFT line display
DSP02-LS / DSP02-LS2	STN line display

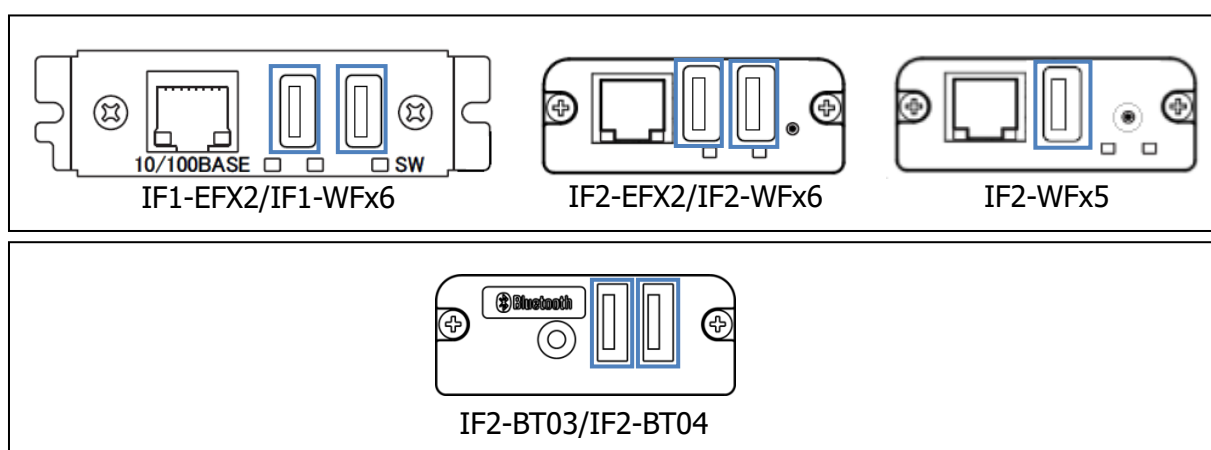
Barcode scanner

Object Model	Function
SCN01-Z1D	1D barcode scanner
SCN02-Z2D BC-NL30000U	2D barcode scanner

* When using this driver, the setting described in "[5. Barcode scanner setting](#)" is required.

Printer connection

To connect the target peripheral device, turn off the printer power supply once, then connect it to the USB terminal of the LAN interface shown below. After that, turn on the printer power supply, wait for about 30 seconds until the target peripheral device becomes usable, and then execute the peripheral device control.



The following lists prohibited actions with regard to a peripheral device connection.

- Connecting other than a supported peripheral device (USB hub, smartphone, etc.) to a USB port of the interface.
- Inserting and removing the cable connector of the peripheral device into/from a USB port of the interface while the printer power is on.
- Connecting multiple peripheral devices of the same type to a USB port of the interface (e.g. connecting two displays).

If any of the above actions is performed, it may lead to the misoperation and, in the worst case, cause

a failure of the printer or connected peripheral device.

Network interface connection

When using the line display and the barcode scanner for the Network interface, it is necessary to change the setting related to the service. For the basic operation, refer to the instruction manual of the interface board of the printer.

Please connect to each printer from a Web browser and display the following Service screen. Configure the services provided by the printer.

The screenshot shows the 'LAN board' configuration page for 'CITIZEN SYSTEMS'. The 'CONFIG' tab is active, and the 'Service' sub-tab is selected. A red rectangle highlights the 'VCOM Convert' section, where the 'Enable' radio button is selected. Below this, there are sections for 'HID Scanner Convert', 'XML Print' (with port 8080 and timeouts), 'XML Device Control' (with port 8085 and timeouts), and 'XML Device Control / Line Display' (with baud rate 9600 and data format 8 bit).

Select Enable of VCOM Converter referring to the inside of the red frame. Then scroll to the bottom and press the "Submit" button. Finally, press the "Save & Reboot" button on the "Maintenance" tab and select "Yes".

* A beep will be heard from the printer after setting is completed.

When checking "Show configuration" in the above red frame, the setting screen of "Media Converter Configuration / VCOM Convert" is displayed, but it is already the appropriate value of the corresponding display. Therefore, please do not change by normal use.

Each setting value holds the value even when the power is turned off. When factory default setting (Factory Default) processing is performed, each set value is initialized.

Use directly connected to PC

Install the Virtual COM driver that corresponds to each model. On the POS for .NET driver, specify the serial interface port specified on the Virtual COM driver.

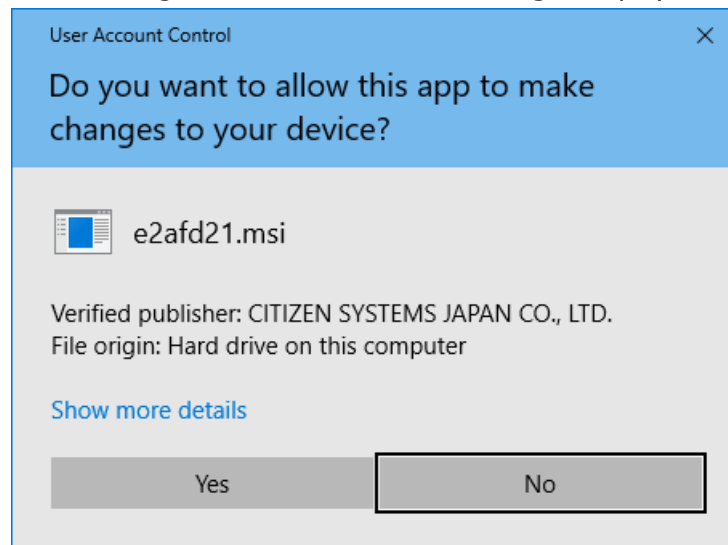
2. Installation

2.1. Installation Procedure

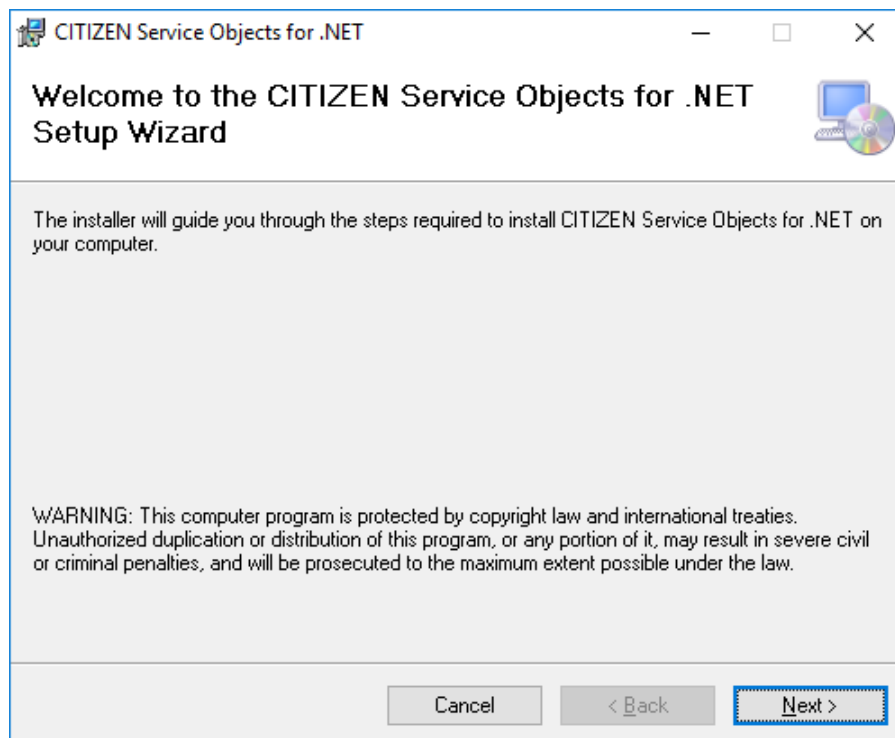
This section describes the installation instruction of this product.

Make sure to terminate all the running applications before starting the installation.

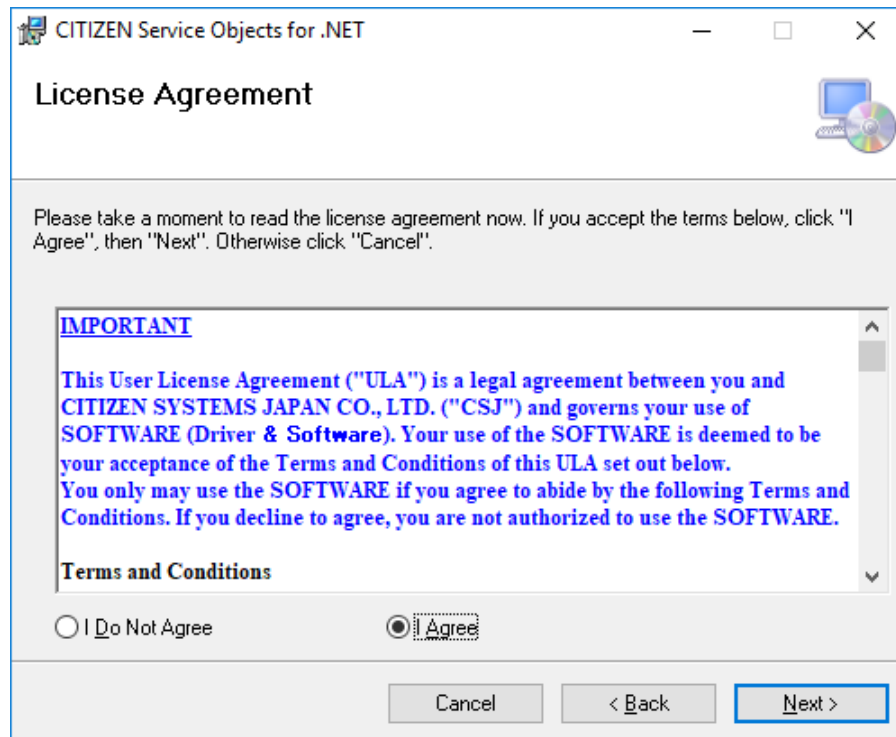
- 1) Activate CSJ_POSforNET_EN_Vxxxx.exe (the installer, where xxxx represents the version).
Proceed with the installation by following the instruction of the dialog.
Click "Yes" when the following "User Account Control" dialog is displayed.



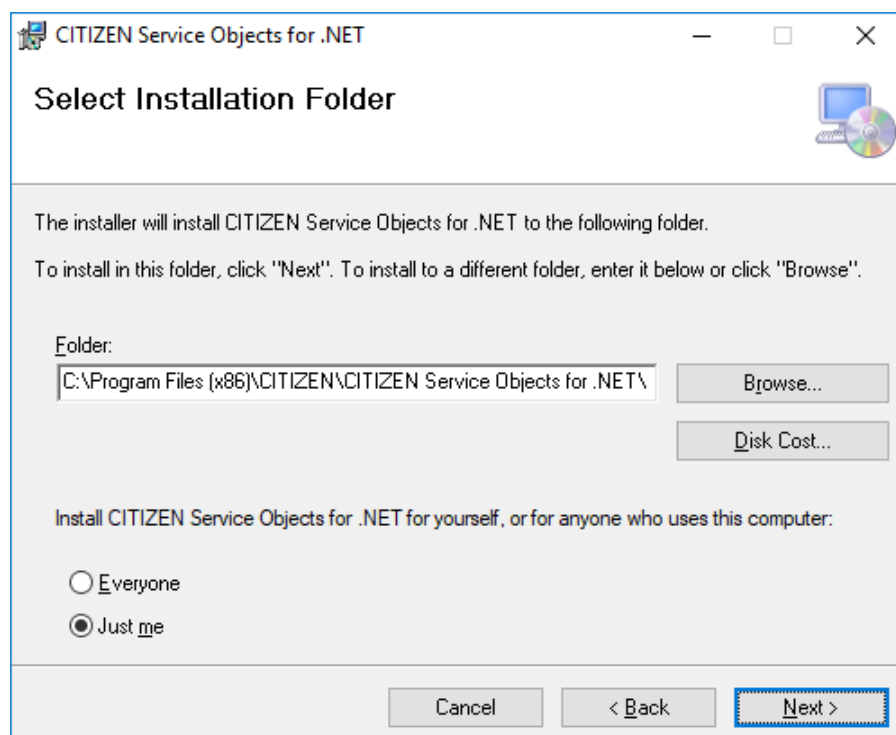
- 2) The Setup Wizard is activated. Click "Next".



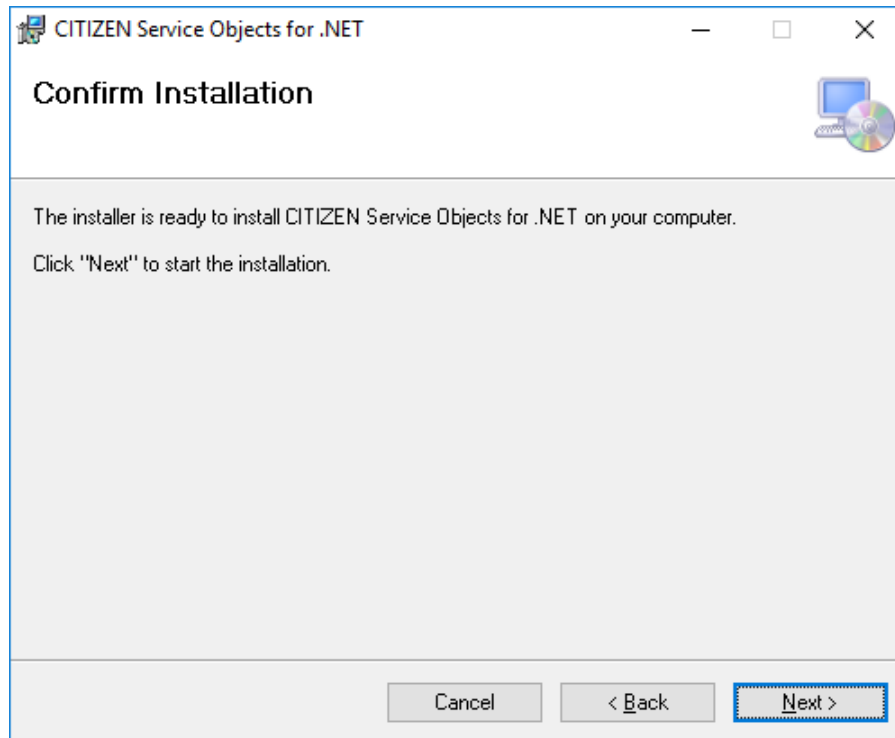
- 3) The "License Agreement" window is displayed.
Select "I Agree" and click "Next" if you agree with the license agreement. Select "I Do Not Agree" and terminate the Setup Wizard if you do not agree with the license agreement.



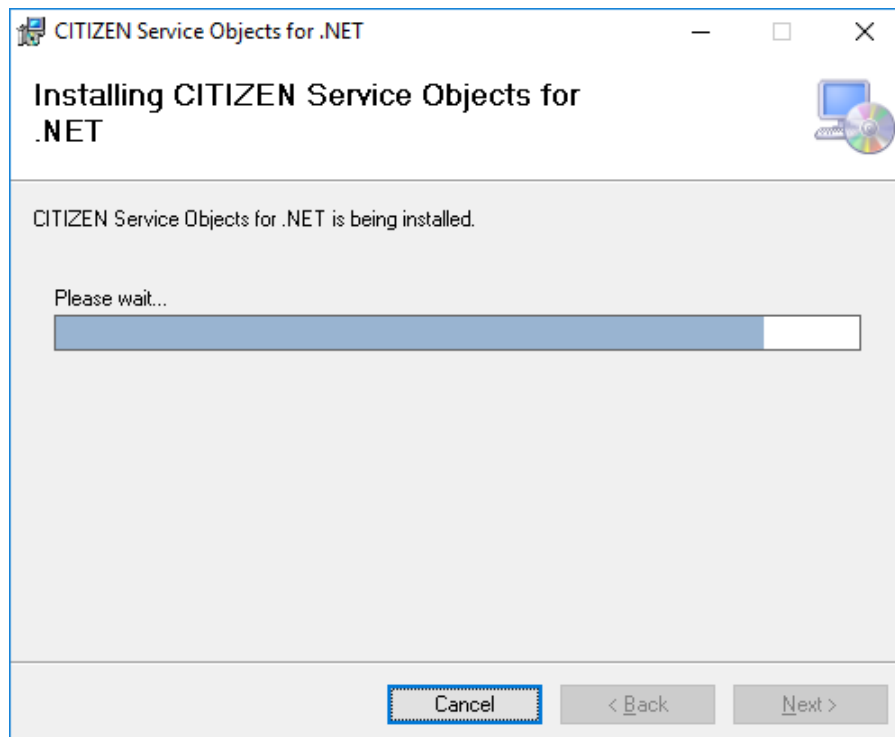
- 4) The "Select Installation Folder" window is displayed.
Specify the installation folder. If you do not change the default installation folder, click "Next". To change the default installation folder, specify a desired folder for installation.



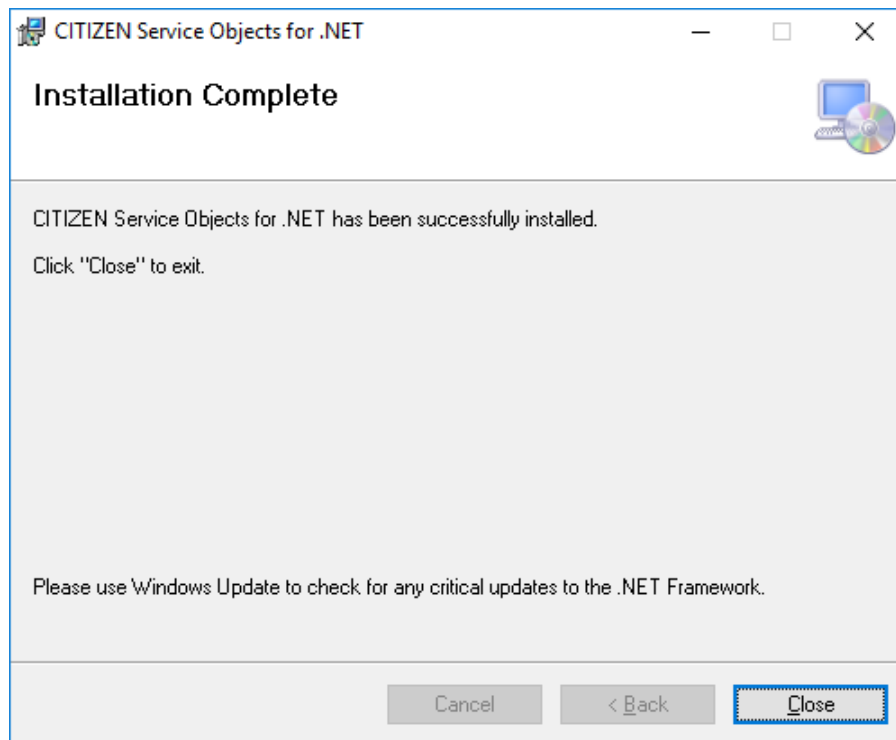
- 5) The window to confirm the installation is displayed. Click "Next".



- 6) The window to show the installation progress is displayed.
(It may take longer time to complete, depending on the environment and specifications of the terminal)



- 7) When the installation is completed successfully, the "Installation Complete" window is displayed. Click "Close".



2.2. Installation Structure

This section shows the installation files of this product.

"Installation Folder"\CITIZEN\CITIZEN Service Objects for .NET

— BcWidth.dll	: Extended library for service objects
— BcWidth64.dll	: Extended library for service objects
— ConfigurationUtility.exe	: Driver setting tool
— ConfigurationUtility.exe.manifest	: Manifest file for driver setting tool
— CSJCheckHealth2.exe	: Execute file for driver setting tool
— CSJCheckHealthLib.dll	: Extended library for driver setting tool
— CSJWPOS.dll	: Service objects for the line thermal printer
— CSJWPOSCommon.dll	: Definition file for the CITIZEN original constants
— EventLog.dll	: Extended library for service objects
— License.rtf	: Driver license agreement
— PortService.exe	: Port service
— PortServiceRemote.dll	: Extended library for port service
— ReleaseNotes_EN.txt	: Release Notes file

2.3. Uninstallation Procedure

This section describes the uninstallation of this product.

Deleting Configuration XML file

Delete the physical and logical devices in Configuration Utility.

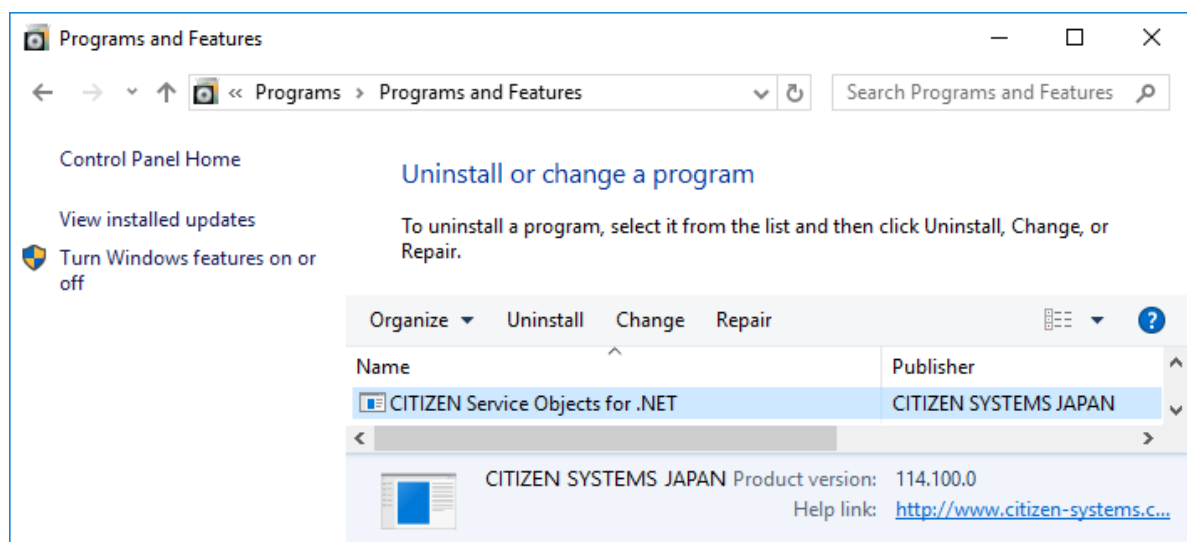
The Configuration XML file is deleted when everything is deleted.

For the deletion of a device, see the description in ["3.6 Deleting a device"](#).

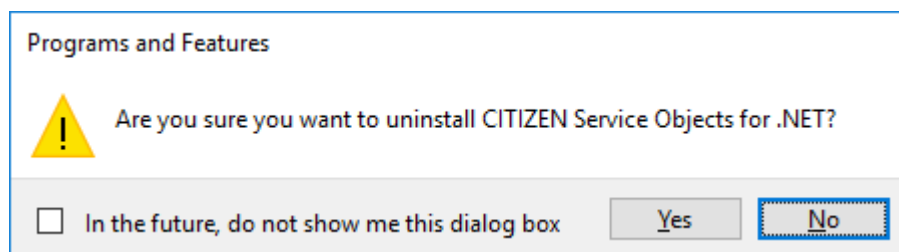
※ It is recommended to leave the registered device setting when upgrading the version of this product.

Deleting Service Objects for .NET

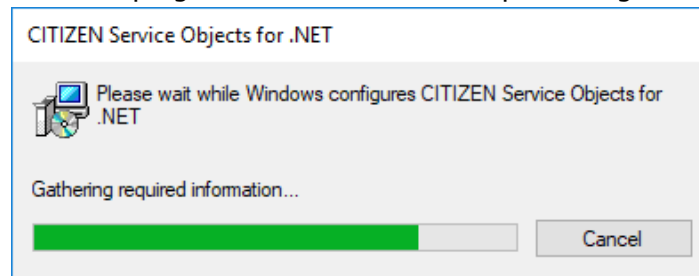
- 1) Under "Control Panel" - "Programs" - "Programs and Features" (it may be "Add/Remove Programs" in some OS versions) list, select "Citizen Service Objects for .NET" and click "Uninstall".



- 2) The message dialog of "Add/Remove Programs" is displayed.
Click "Yes". Or, click "No" to cancel the uninstallation of this program.



- 3) The dialog to show the progress of the uninstallation processing is displayed.



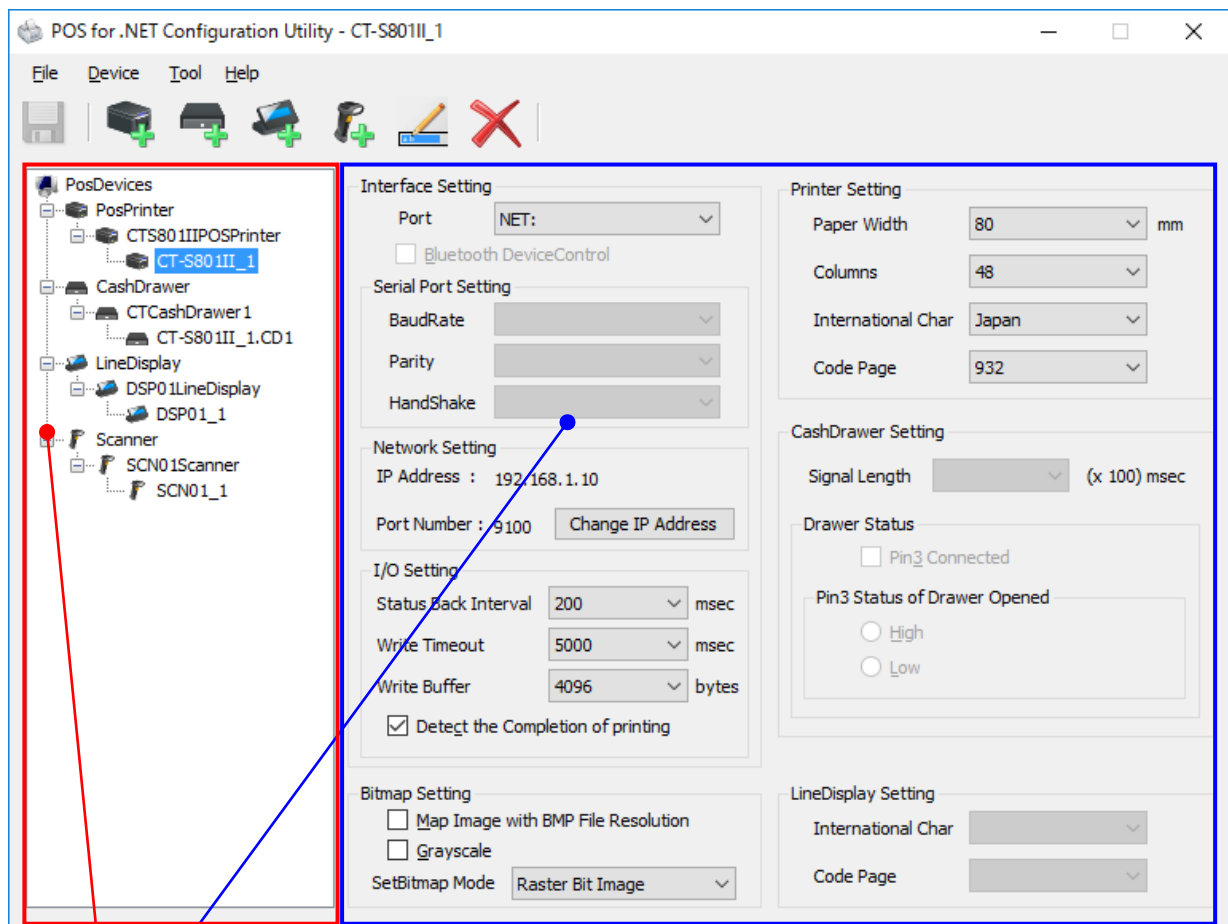
- 4) When the uninstallation is completed successfully, "Citizen Service Objects for .NET" is removed from the list of the "Programs and Features" (or "Add/Remove Programs" in some OS versions).

3. POS for .NET Driver Setting Tool

This section describes the usage of Configuration Utility. When the driver is installed, the shortcut icon is registered in the Windows Start Menu.

"Start" -> "Programs" -> "CITIZEN" -> "Pos for .NET" -> "Configuration Utility"

Main Screen

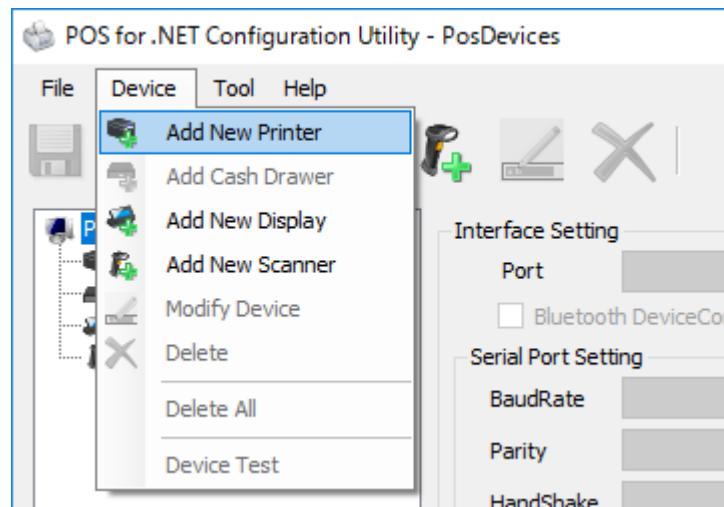


Setting View: The setting of each device is displayed (the setting can be changed directly)

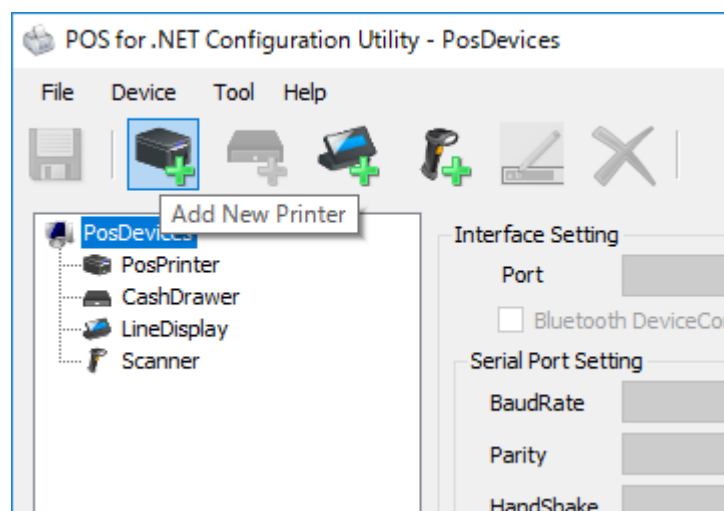
Device View: The service objects and the logical devices are shown in the tree view.

3.1. Adding New Printer and Cash Drawer

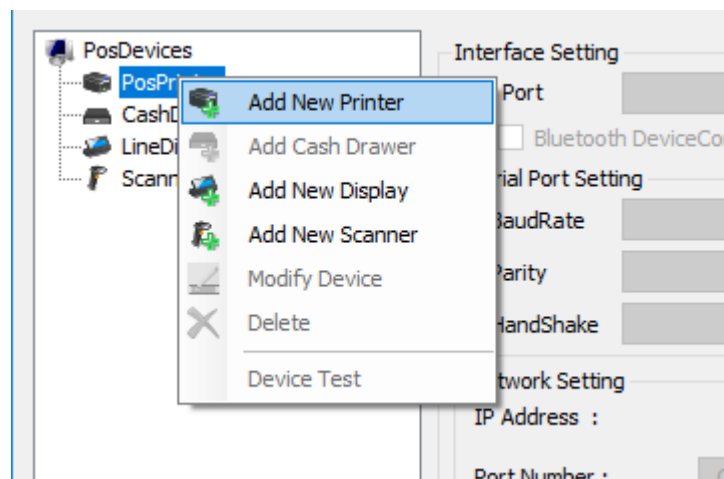
- 1) Click "Add New Printer" in the "Device" menu.



Or, click "Add New Printer" icon on the tool bar.



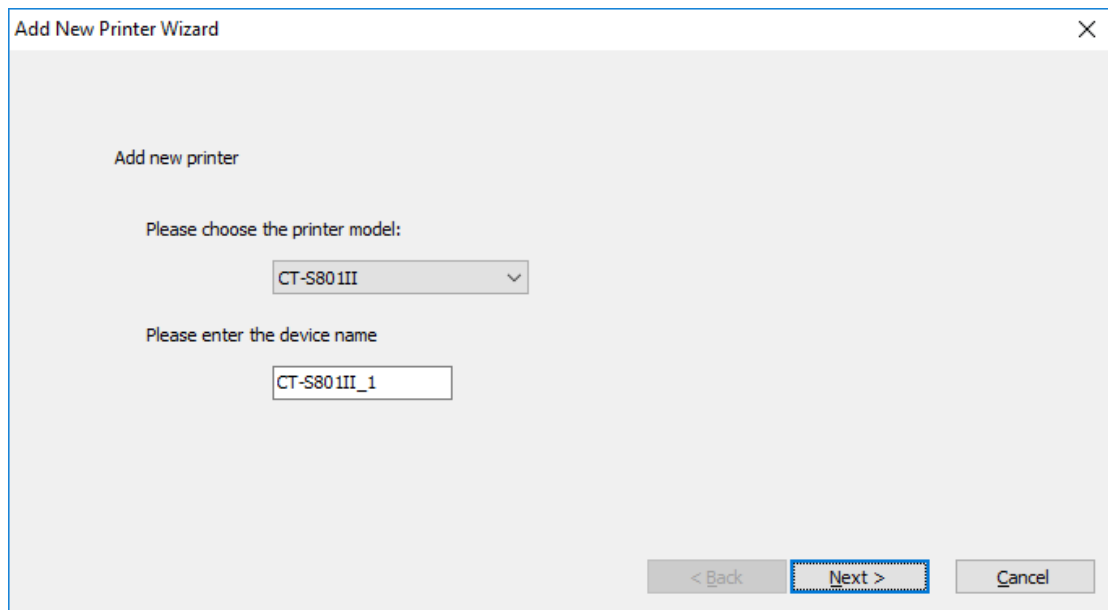
Or, click "Add New Printer" in the context menu on the device view.



- 2) "Add New Printer Wizard" is activated.

Enter the model and the logical device name of the printer to be added, and click "Next".

The default logical device name is the "model name of the printer+ serial number of the printer".
(CT-S801II is specified in this example)



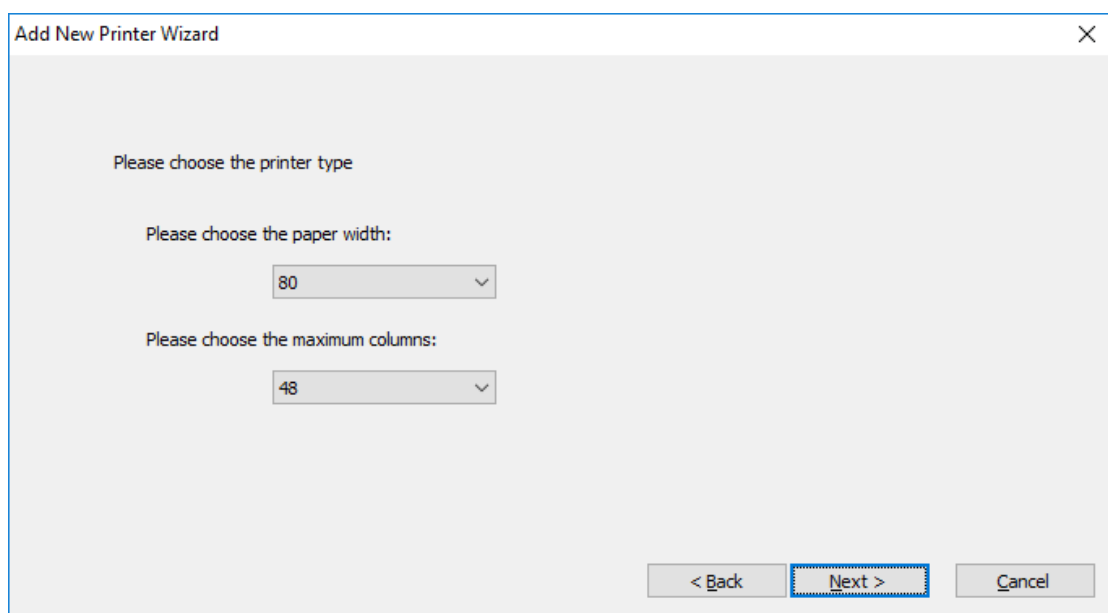
For the functions of each printer, see "[1. Operating Environment](#)".

- 3) The "Please choose the printer type" window is displayed.

Choose the paper width and the maximum columns per line with reference to the table below.

The setting is linked to the default value of the "RecLineWidth / RecLineChars / RecLineCharsList" properties.

For details, refer to Application Development Guide of this product.



CT-D101 Series

Paper Size (mm)	Max. print columns	RecLineWidth	RecLineChars	RecLineCharsList
80	58	30	360	30, 40, 45
		32	384	32, 42, 48
		35	420	35, 46, 52
	42	512	42	42, 56, 64
		576	48	48, 64, 72

CT-D150 Series

Paper Size (mm)	Max. print columns	RecLineWidth	RecLineChars	RecLineCharsList
80	58	30	360	30, 40, 45
		32	384	32, 42, 48
		35	420	35, 46, 52
	42	512	42	42, 56, 64
		576	48	48, 64, 72

CT-D151 Series

Paper Size (mm)	Max. print columns	RecLineWidth	RecLineChars	RecLineCharsList
80	58	30	360	30, 40, 45
		32	384	32, 42, 48
		35	420	35, 46, 52
	42	512	42	42, 56, 64
		576	48	48, 64, 72

CT-E301 Series

Paper Size (mm)	Max. print columns	RecLineWidth	RecLineChars	RecLineCharsList
80	58	30	360	30, 40, 45
		32	384	32, 42, 48
		35	420	35, 46, 52
	42	512	42	42, 56, 64
		576	48	48, 64, 72

CT-E351 Series

Paper Size (mm)	Max. print columns	RecLineWidth	RecLineChars	RecLineCharsList
80	58	30	360	30, 40, 45
		32	384	32, 42, 48
		35	420	35, 46, 52
	42	512	42	42, 56, 64
		576	48	48, 64, 72

CT-E601 Series

Paper Size (mm)	Max. print columns	RecLineWidth	RecLineChars	RecLineCharsList
80	58	30	360	30, 40, 45
		32	384	32, 42, 48
		35	420	35, 46, 52
	42	512	42	42, 56, 64
		576	48	48, 64, 72

CT-E651 Series

Paper Size (mm)		Max. print columns	RecLineWidth	RecLineChars	RecLineCharsList
80	58	30	360	30	30, 40, 45
		32	384	32	32, 42, 48
		35	420	35	35, 46, 52
	42	42	512	42	42, 56, 64
		48	576	48	48, 64, 72

CT-S251 Series

Paper Size (mm)		Max. print columns	RecLineWidth	RecLineChars	RecLineCharsList
58		30	360	30	30, 40, 45
		32	384	32	32, 42, 48
		35	420	35	35, 46, 52
		36	432	36	36, 48, 54

CT-S281 Series

Paper Size (mm)		Max. print columns	RecLineWidth	RecLineChars	RecLineCharsList
58		32	384	32	32, 42, 48

CT-S310II Series

Paper Size (mm)		Max. print columns	RecLineWidth	RecLineChars	RecLineCharsList
80	58	30	360	30	30, 40, 45
		32	384	32	32, 42, 48
		35	420	35	35, 46, 52
	42	42	512	42	42, 56, 64
		48	576	48	48, 64, 72

CT- S601/651/801/851 Series

Paper Size (mm)				Max. print columns	RecLineWidth	RecLineChars	RecLineCharsList
83	80	60	58	30	360	30	30, 40, 45
				32	384	32	32, 42, 48
				35	420	35	35, 46, 52
				36	432	36	36, 48, 54
				42	512	42	42, 56, 64
				48	576	48	48, 64, 72
			53	640	53	53, 71, 80	

CT- S601II/651II/801II/851II Series

Paper Size (mm)				Max. print columns	RecLineWidth	RecLineChars	RecLineCharsList
83	80	60	58	30	360	30	30, 40, 45
				32	384	32	32, 42, 48
				35	420	35	35, 46, 52
				36	432	36	36, 48, 54
				42	512	42	42, 56, 64
				48	576	48	48, 64, 72
			53	640	53	53, 71, 80	

CT- S801III/851III Series

Paper Size (mm)				Max. print columns	RecLineWidth	RecLineChars	RecLineCharsList
83	80	60	58	30	360	30	30, 40, 45
				32	384	32	32, 42, 48
				35	420	35	35, 46, 52
				36	432	36	36, 48, 54
				42	512	42	42, 56, 64
				48	576	48	48, 64, 72
				53	640	53	53, 71, 80

CT-S751 Series

Paper Size (mm)		Max. print columns	RecLineWidth	RecLineChars	RecLineCharsList
80	58	30	360	30	30, 40, 45
		32	384	32	32, 42, 48
		35	420	35	35, 46, 52
		42	512	42	42, 56, 64
		48	576	48	48, 64, 72

CT- S2000 Series

Paper Size (mm)				Max. print columns	RecLineWidth	RecLineChars	RecLineCharsList
83	80	60	58	30	360	30	30, 40, 45
				32	384	32	32, 42, 48
				35	420	35	35, 46, 52
				36	432	36	36, 48, 54
				42	512	42	42, 56, 64
				48	576	48	48, 64, 72
				53	640	53	53, 71, 80

CT-S4000 Series

Paper Size (mm)			Max. print columns	RecLineWidth	RecLineChars	RecLineCharsList
112	82.5	80	42	512	42	42, 56, 64
			48	576	48	48, 64, 72
			55	660	55	55, 73, 82
			60	720	60	60, 80, 90
			69	832	69	69, 92, 104

CT-S4500 Series

Paper Size (mm)				Max. print columns	RecLineWidth	RecLineChars	RecLineCharsList
112	82.5	80	58	30	360	30	30, 40, 45
				32	384	32	32, 42, 48
				35	420	35	35, 46, 52
				36	432	36	36, 48, 54
				42	512	42	42, 56, 64
				48	576	48	48, 64, 72
				55	660	55	55, 73, 82
				60	720	60	60, 80, 90
				69	832	69	69, 92, 104

PMU3300 Series

Paper Size (mm)			Max. print columns	RecLineWidth	RecLineChars	RecLineCharsList
80	60	58	30	360	30	30, 40, 45
			32	384	32	32, 42, 48
			35	420	35	35, 46, 52
			36	432	36	36, 48, 54
			42	512	42	42, 56, 64
			48	576	48	48, 64, 72

Specify the above settings, and click "Next".

- 4) The "Details of Settings" window is displayed.
The setting of each item is as shown below.

Details of Settings

I/O Setting

Status Back Interval: 200 msec

Write Timeout: 5000 msec

Write Buffer: 4096 bytes

☒ Detect the completion of printing

Printer Setting

International Char: U.S.A

Code Page: 437

Bitmap Setting

☐ Map Image with BMP File Resolution

☐ Grayscale

SetBitmap Mode: Raster Bit Image

< Back **Next >** Cancel

Status Back Interval

You can specify the polling interval to obtain the printer status.

Setting range: 100 – 2000 msec

Write Timeout

You can specify the timeout period for the writing to the output port.

Setting range: 5,000 - 1,000,000 msec

Write Buffer

You can specify the buffer size for the writing to the output port.

Setting range: 0 - 4,096 bytes

Detect the completion of printing

When you enable the setting, the driver judges the completion of the printing output. For the details of this setting, refer to Application Development Guide of this product.

International Char

You can specify the international characters. (The selections vary by the model)

Setting Values: U.S.A / France / Germany / U.K. / Denmark I / Sweden / Italy / Spain I / Japan / Norway / Denmark II / Spain II / Latin America / Korea / Croatia / China /

Vietnam

Code Page

You can specify the code page. (The selections vary by the model)

Setting Value: 437 / 850 / 852 / 857 / 858 / 860 / 863 / 864 / 865 / 866 / 874 / 932 / 936 / 998
/ 999 / 1252 / 1258 / 65001 / User Defined

SetBitmap Mode

You can specify the bit image mode of the SetBitmap method. For the details of this mode, refer to Application Development Guide of this product.

Setting values: Raster Bit Image / NV (Unused key code) / NV (Used key code)

Map Image with BMP File Resolution

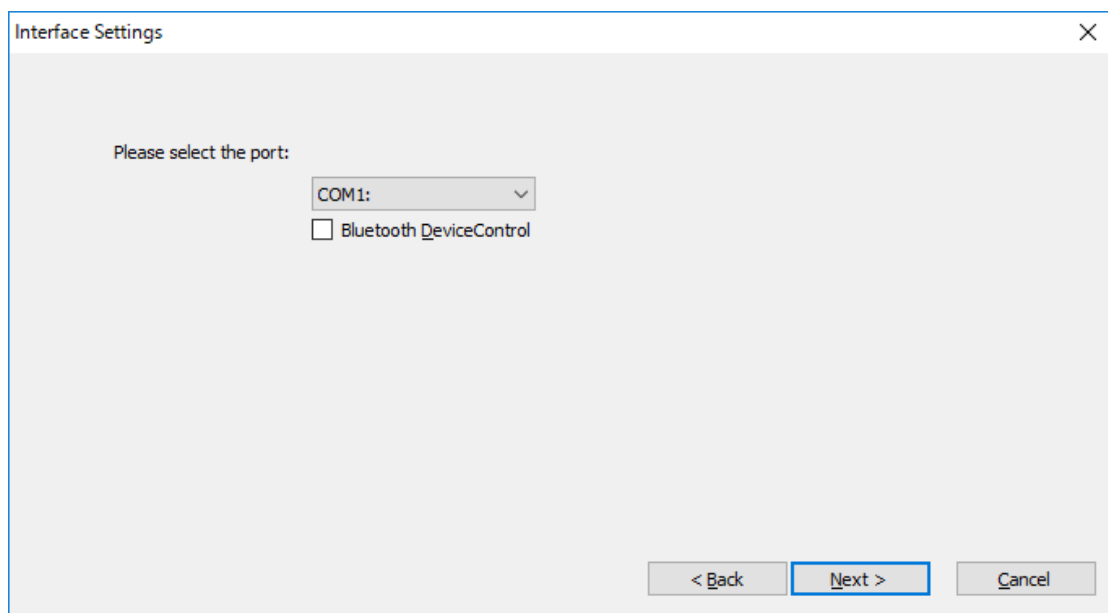
When you enable the setting, a bit image that is specified with the Setbitmap method and PrintBitmap is output based on the BMP file resolution.

Grayscale

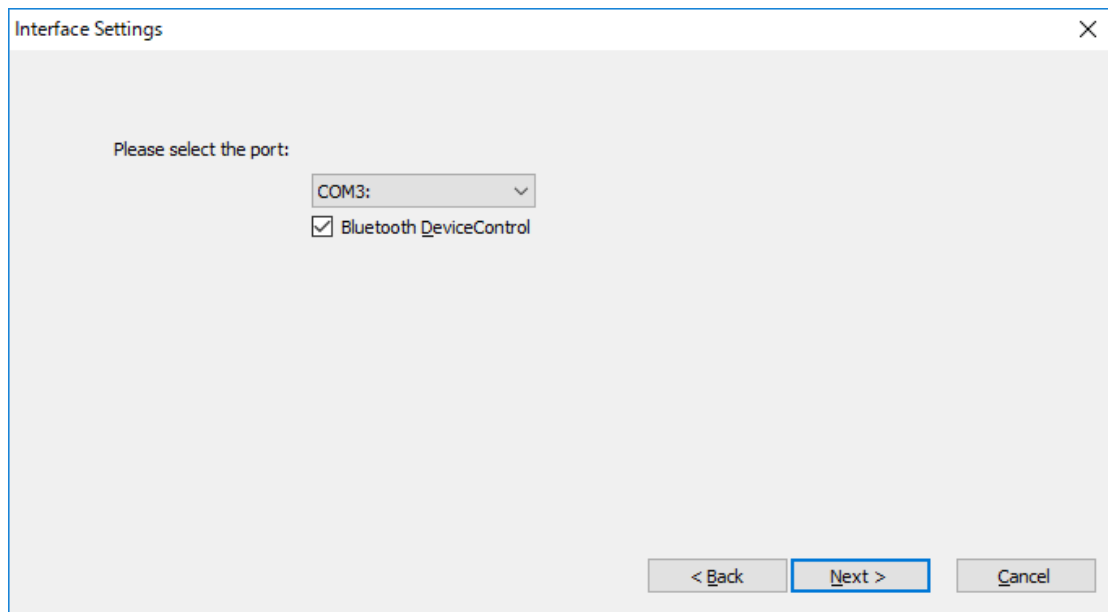
When you enable the setting, you can specify the bitmap printing type to the grayscale. For the details of this mode, refer to Application Development Guide of this product.

Specify the above settings and click "Next".

- 5) The "Interface Settings" window is displayed.
Select the port to use and click "Next".



Check "Bluetooth DeviceControl" only when using peripheral devices via IF2-BT03/04. In other cases, uncheck the "Bluetooth DeviceControl".



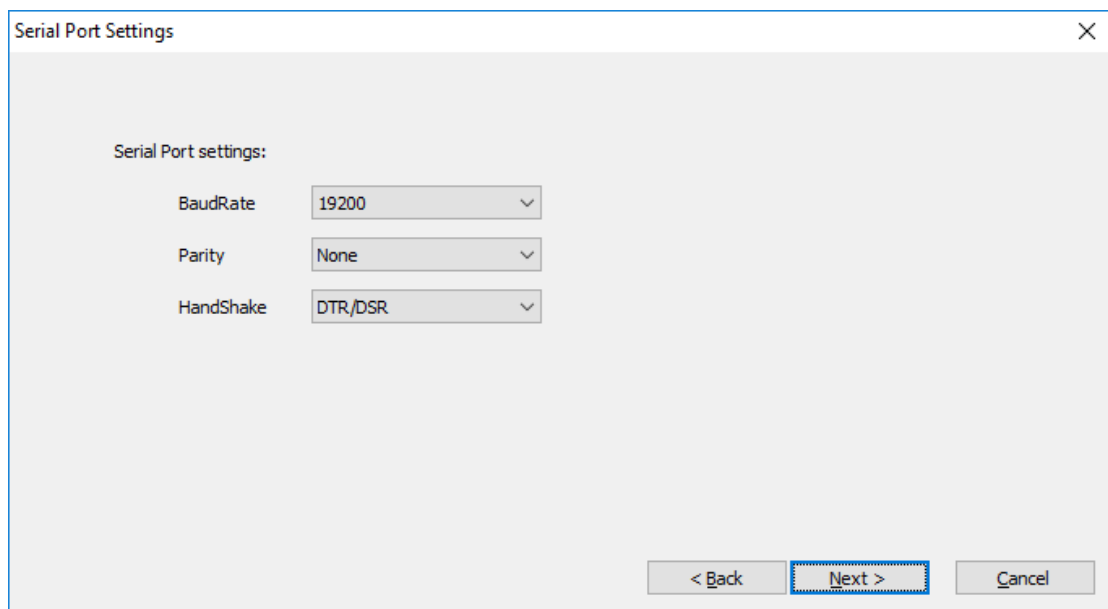
When the COM port is specified

The "Serial Port settings" window is displayed.

Specify "BaudRate", "Parity" and "Handshake", and click "Next".

- * The communication cannot be performed when the same serial port setting is not made on the printer and the terminal.

For the serial port setting of the printer, refer to the user's manual of the printer.



When NET is specified

The "Network Settings" window is displayed. Input the "IP Address" and the "Port Number" to use.

- * After completing registration, please set the printer setting "Job receive timeout".

It is recommended to set the time in seconds to cancel the connection to "120".

For the printer settings, refer to chapter ["3.9 Tool menu"](#).

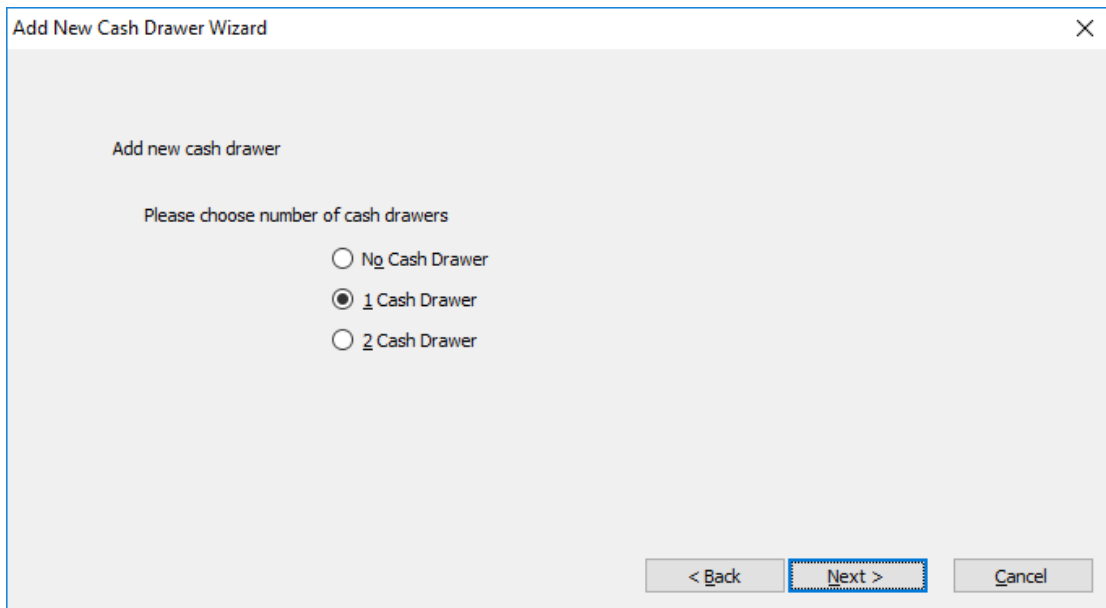


The "Network Settings" dialog box contains two input fields. The "IP Address" field is set to "192 . 168 . 1 . 10" and the "Port Number" field is set to "9100". At the bottom right, there are three buttons: "< Back", "Next >" (which is highlighted with a blue dashed border), and "Cancel".

Specify the above settings and click "Next".

- 6) "Add New Cash Drawer Wizard" is activated subsequently.

Specify the number of the cash drawers connected to the printer, and click "Next".



The "Add New Cash Drawer Wizard" dialog box has a title bar and a close button. The main content area says "Add new cash drawer" and "Please choose number of cash drawers". Below this, there are three radio button options: "No Cash Drawer", "1 Cash Drawer" (which is selected), and "2 Cash Drawer". At the bottom right, there are three buttons: "< Back", "Next >" (highlighted with a blue dashed border), and "Cancel".

When "1 Cash Drawer" or "2 Cash Drawer" is specified, the "First drawer settings" window is displayed.

Please enter the device name

Enter the logical device name of the cash drawer.

The default logical device name is "the model name of the printer + the serial number of the printer + CD1".

(And for the second drawer, it is "the model name of the printer + the serial number of the printer + CD 2".)

Signal Length

Specify the time interval of the pulse signal to be output to the solenoid of the cash drawer.

Setting range: 1 - 8 (x 100) msec

Pin3 Connected

Check when the third pin of the drawer kick connector (drawer switch input) is connected.

Pin3 Status of Drawer Opened

Specify the drawer switch input signal level when the cash drawer is opened.

Setting values: High / Low

Specify the above settings and click "Next".

※ When "2 Cash Drawer" is specified and "Next" is clicked, the "Second drawer settings" window is displayed.

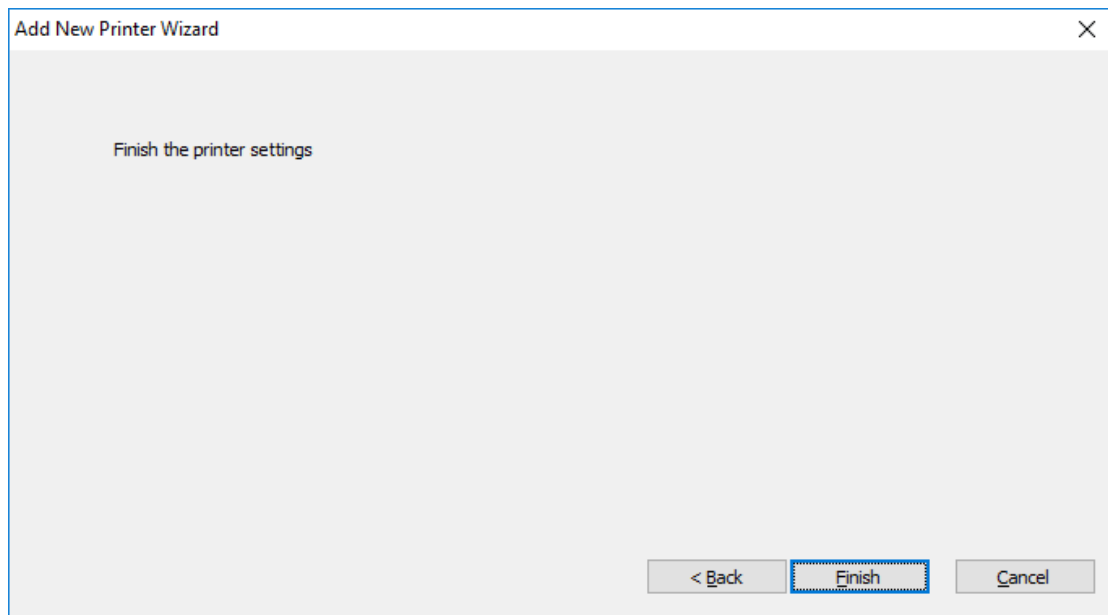
Make the settings for the second cash drawer in the same manner as the above setting, and click "Next".

7) The "Finish the printer settings" window is displayed.

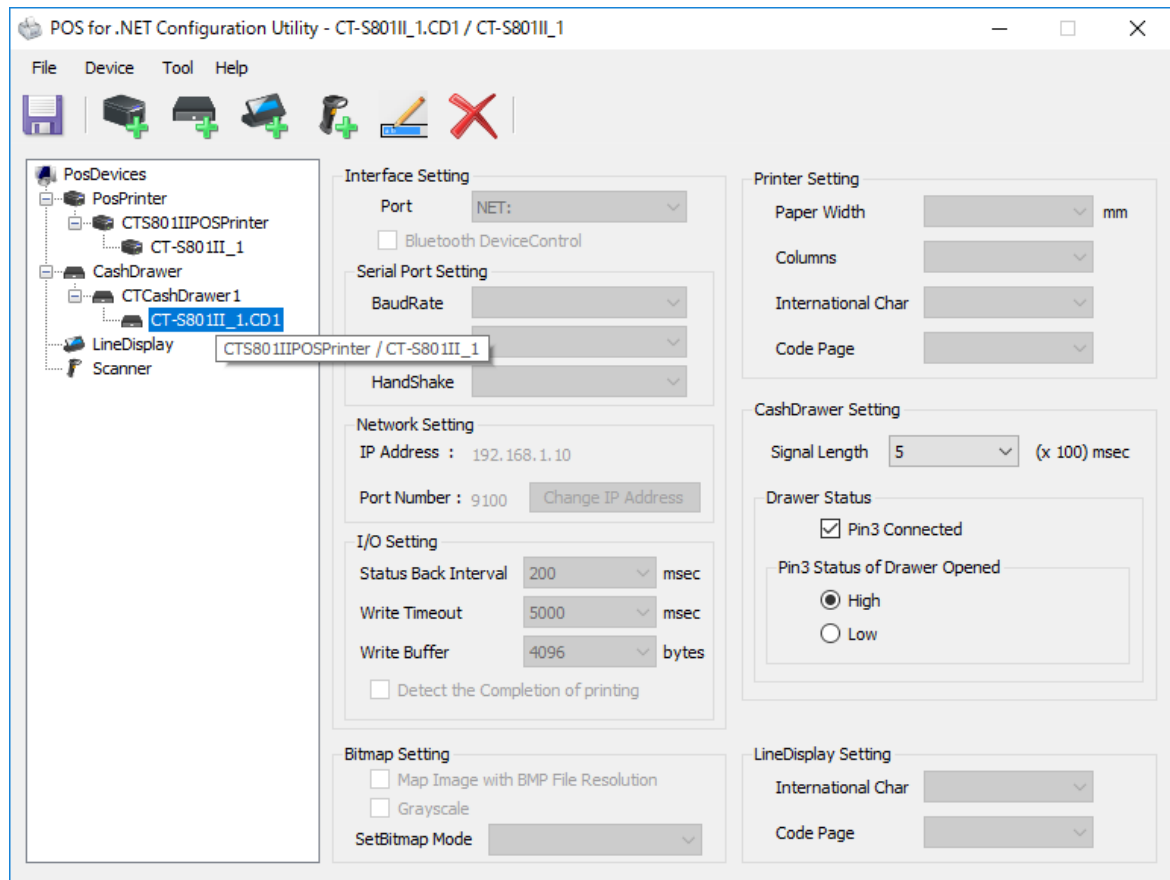
Click "Finish". The settings are not reflected to the Configuration XML file at this point.

* The settings are not reflected to the Configuration XML file until "Save" is clicked on the Main Screen.

(See the description in "Save" in ["3.8 File menu"](#) for how to "Save")



- 8) When the wizard is terminated, the registered printer and the cash drawer are shown in "Device View" and "Setting View". When the drawer is selected, the logical device name of the connected printer is added at the tail of the logical device name on the title bar, and the "service object name of the connected printer / logical device name of the printer" is shown in the tooltip.

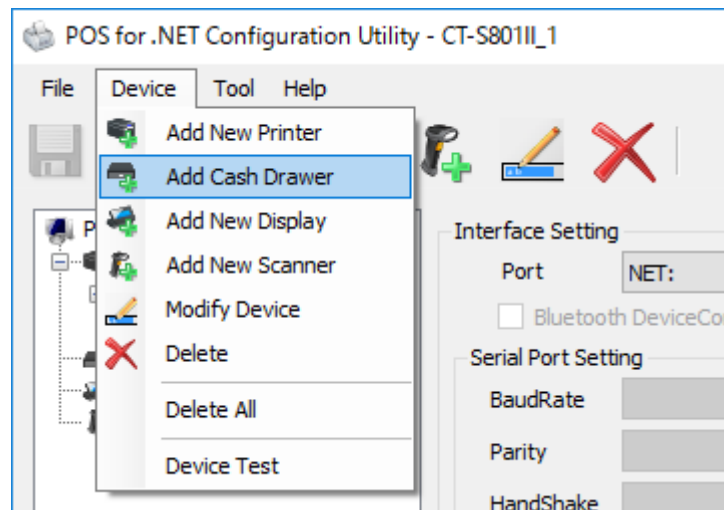


- *1 After the device is registered, the setting of each item can be changed directly through the Setting View. The settings are not reflected to the Configuration XML file until "Save" is clicked on the Main Screen. (See the description in "Save" in ["3.8 File menu"](#) for how to "Save")
- *2 Click "Change IP Address" to change "IP Address" or "Port Number" in the "Network Setting" section.

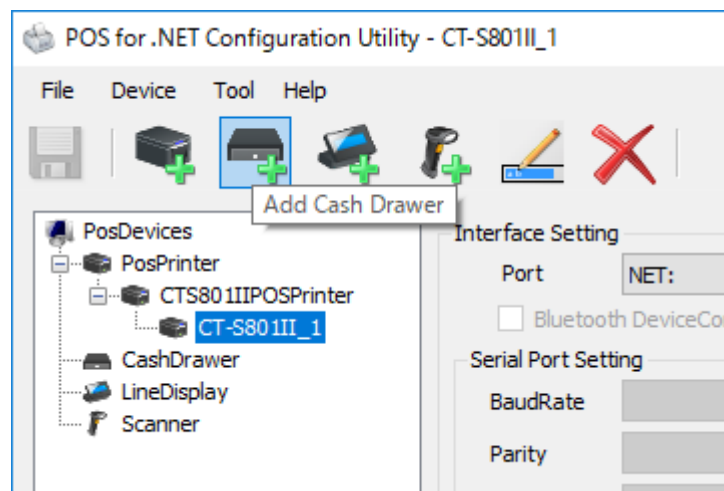
3.2. Adding New Cash Drawer

- 1) Click "Add Cash Drawer" in the "Device" menu.

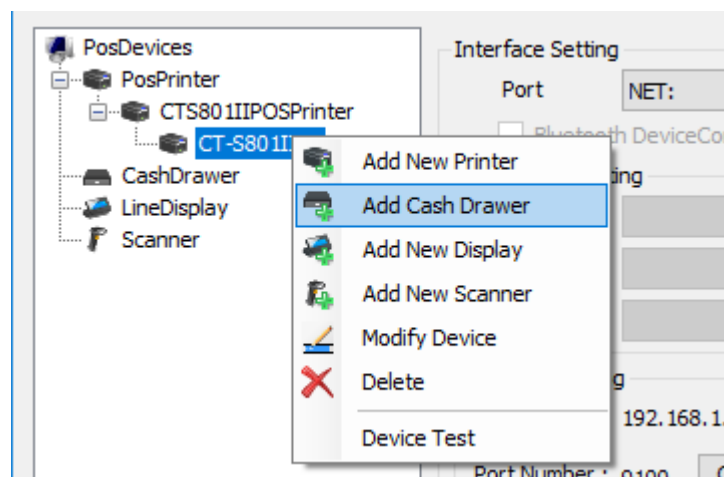
* Make sure to complete the registration of the printer before adding a cash drawer.



Or, click the "Add Cash Drawer" icon on the tool bar.



Or, click "Add Cash Drawer" in the context menu on the Device View.



- 2) "Add New Cash Drawer Wizard" is activated.

Add New Cash Drawer Wizard

Add new cash drawer

Please choose the device to connect

CT-S801III_1

Please choose number of cash drawers

☐ No Cash Drawer

☒ 1 Cash Drawer

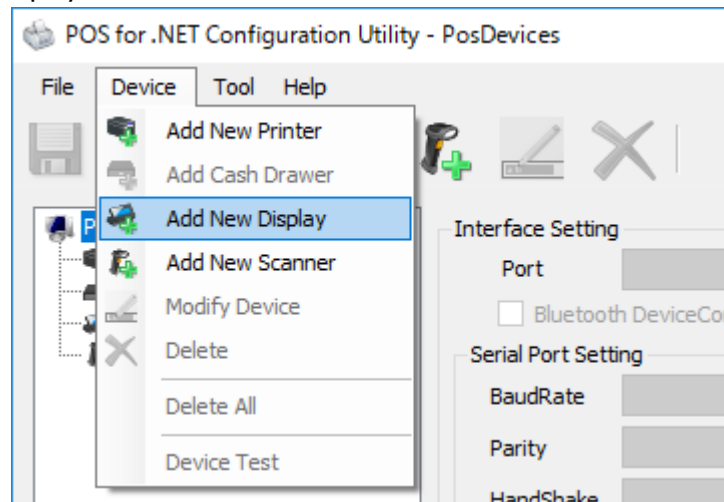
☐ 2 Cash Drawer

< Back Next > Cancel

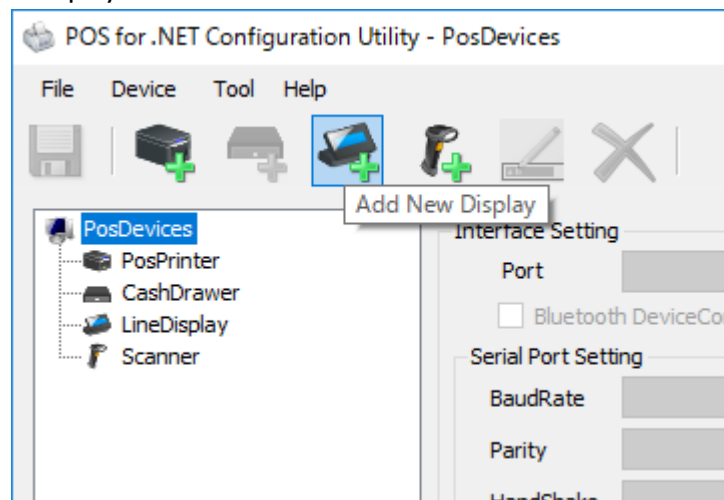
- * For the subsequent procedure, see the descriptions in "6) "Add New Cash Drawer Wizard" is activated subsequently." and later in "[3.1 Adding a new printer / cash drawer](#)" and add a drawer in the same manner.

3.3. Adding New Line Display

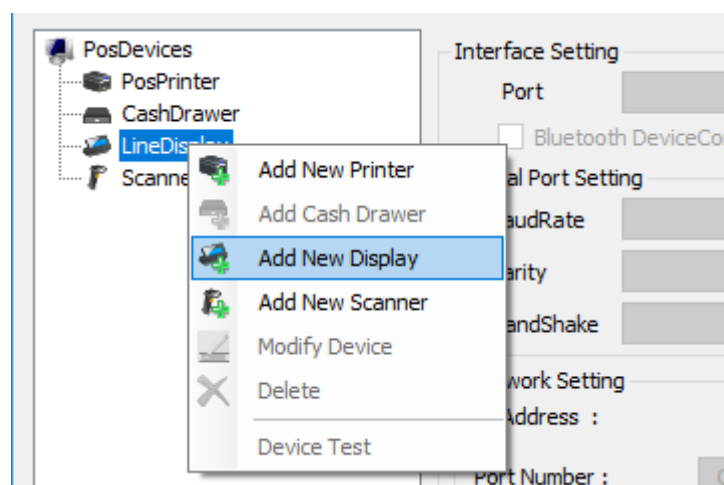
- 1) Click "Add New Display" in the "Device" menu.



Or, click "Add New Display" icon on the tool bar.



Or, click "Add New Display" in the context menu on the device view.



- 2) "Add New Display" is activated.

Enter the model and the logical device name of the line display to be added, and click "Next".

The default logical device name is the “model name of the line display+serial number of the line display”.

(DSP01 is specified in this example)

AddNewDisplay

Add new line display

Please choose the line display model

DSP01

Please enter the device name

DSP01_1

< Back Next > Cancel

3) “Details of Settings” is activated.

The setting of each item is as shown below.

Details of Settings

I/O Setting

Status Back Interval 200 msec

Write Timeout 5000 msec

Display Settings

International Char U.S.A

Code Page 437

< Back Next > Cancel

Status Back Interval

You can specify the polling interval to obtain the line display status.

Setting range: 100 – 2000 msec

Write Timeout

You can specify the timeout period for the writing to the output port.

Setting range: 5,000 - 1,000,000 msec

International Char

You can specify the international characters. (The selections vary by the model)

Setting Values: U.S.A / France / Germany / U.K. / Denmark I / Sweden / Italy / Spain I / Japan / Norway / Denmark II / Spain II / Latin America / Korea / Slovenia/Croatia / China / Vietnam / Arabia / Russia

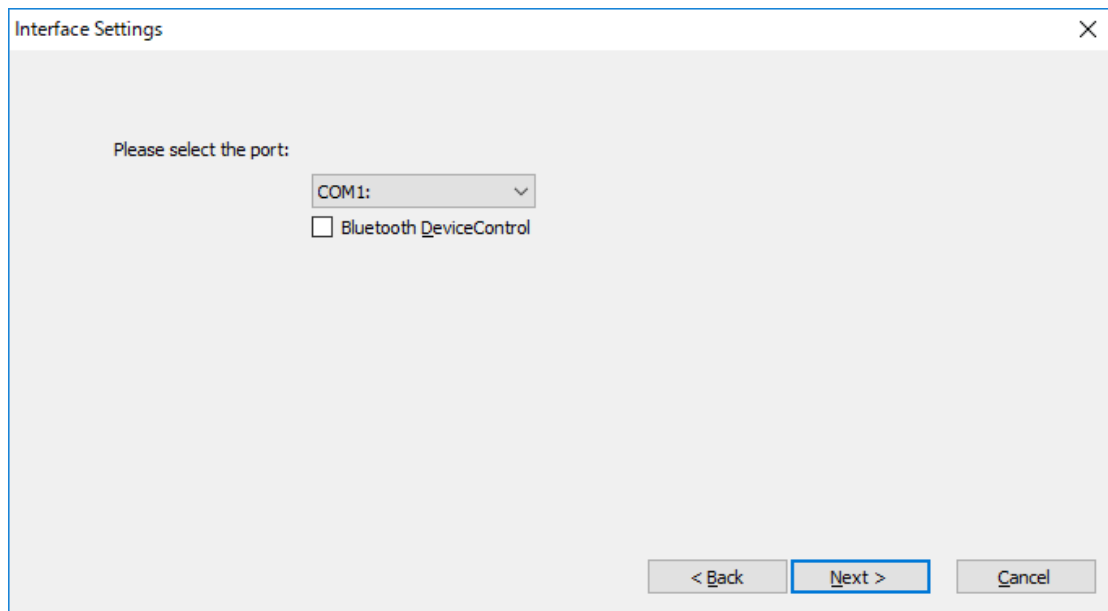
Code Page

You can specify the code page. (The selections vary by the model)

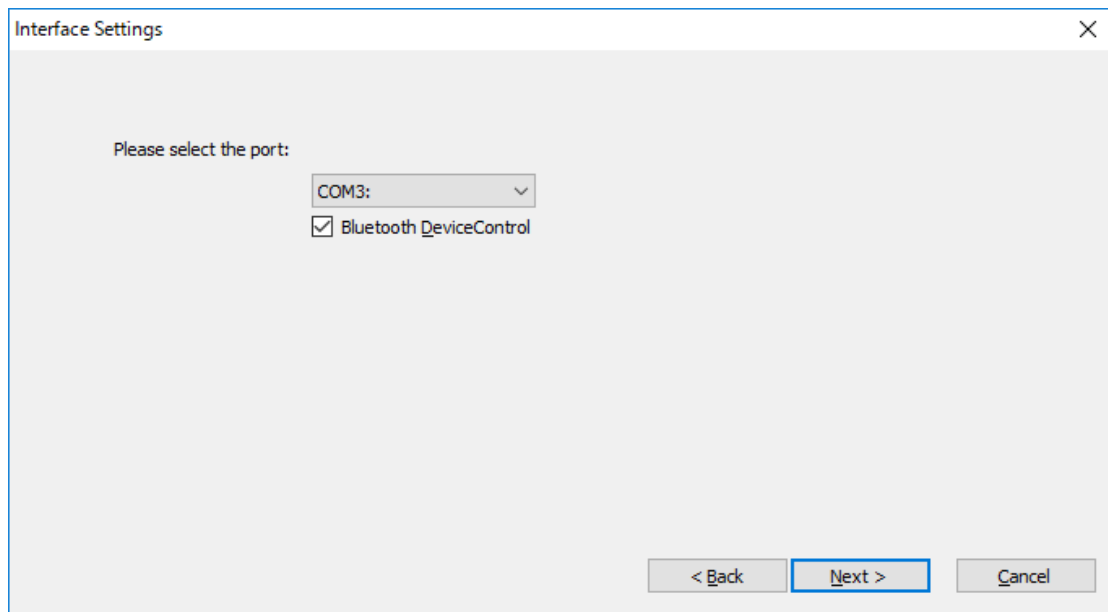
Setting Value: 437 / 720 / 737/ 775 / 850 / 851 / 852 / 853 / 855 / 857 / 858 / 860 / 861 / 862 / 863 / 864 / 865 / 866 / 869 / 874 / 932 / 936 / 949 / 950 / 1250 / 1251 / 1252 / 1253 / 1254 / 1255 / 1256 / 1257 / 1258

Specify the above settings and click "Next".

- 4) The "Interface Settings" window is displayed.
Select the port to use and click "Next".



Check "Bluetooth DeviceControl" only when using a Line display via IF2-BT03/04. In other cases, uncheck the "Bluetooth DeviceControl".



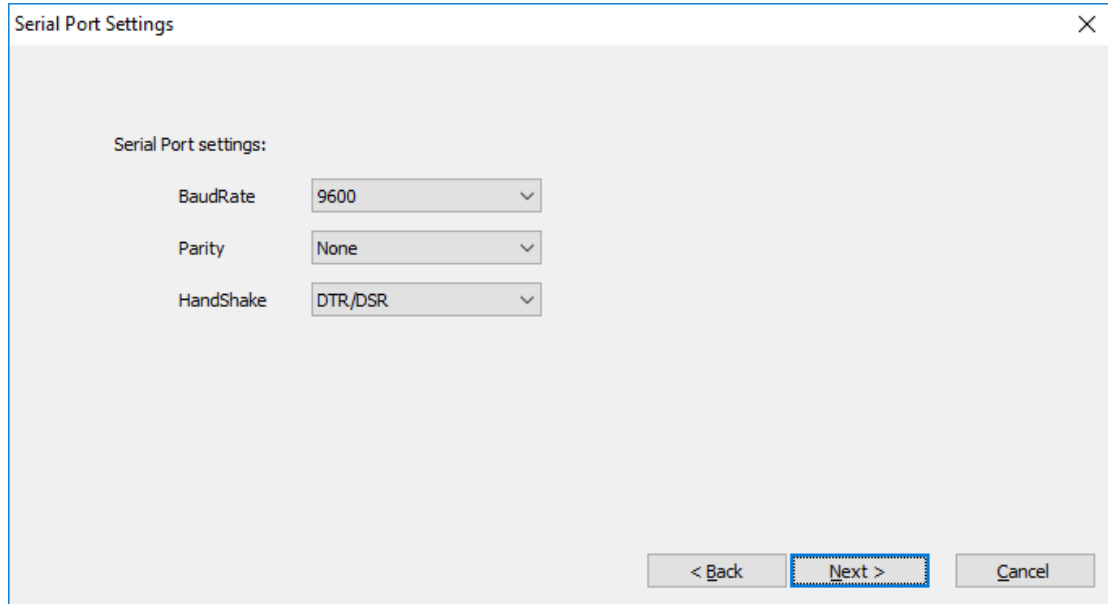
When the COM port is specified

The "Serial Port settings" window is displayed.

Specify "BaudRate", "Parity" and "Handshake", and click "Next".

- * The communication cannot be performed when the same serial port setting is not made on the line display and the terminal.

For the serial port setting of the line display, refer to the user's manual of the line display.



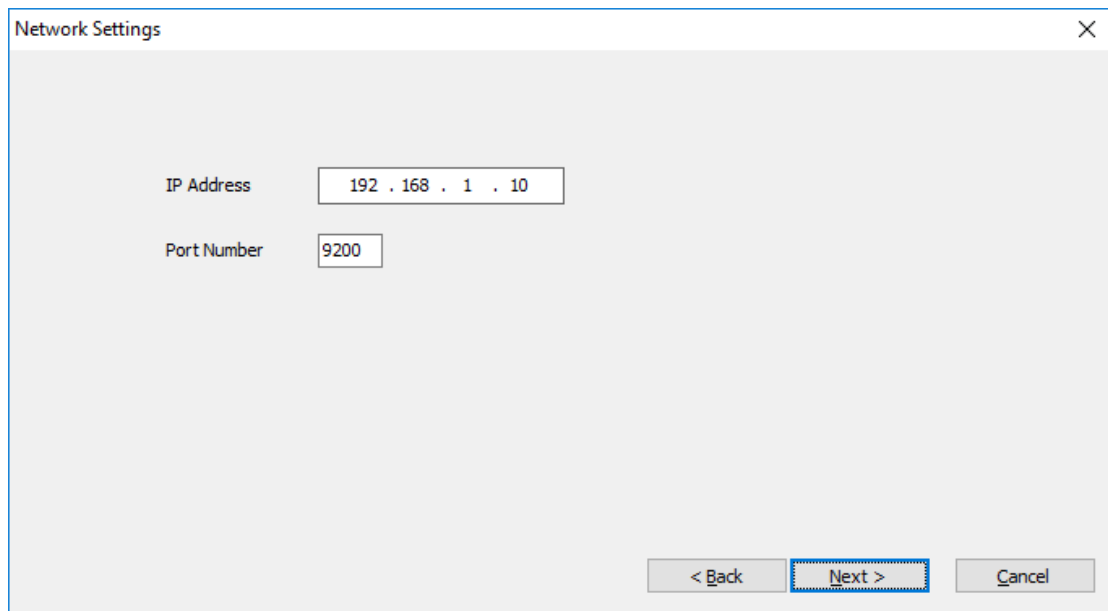
When NET is specified

The "Network Settings" window is displayed. Input the "IP Address" and the "Port Number" to use.

- * After completing registration, please set the printer setting "Job receive timeout".

It is recommended to set the time in seconds to cancel the connection to "120".

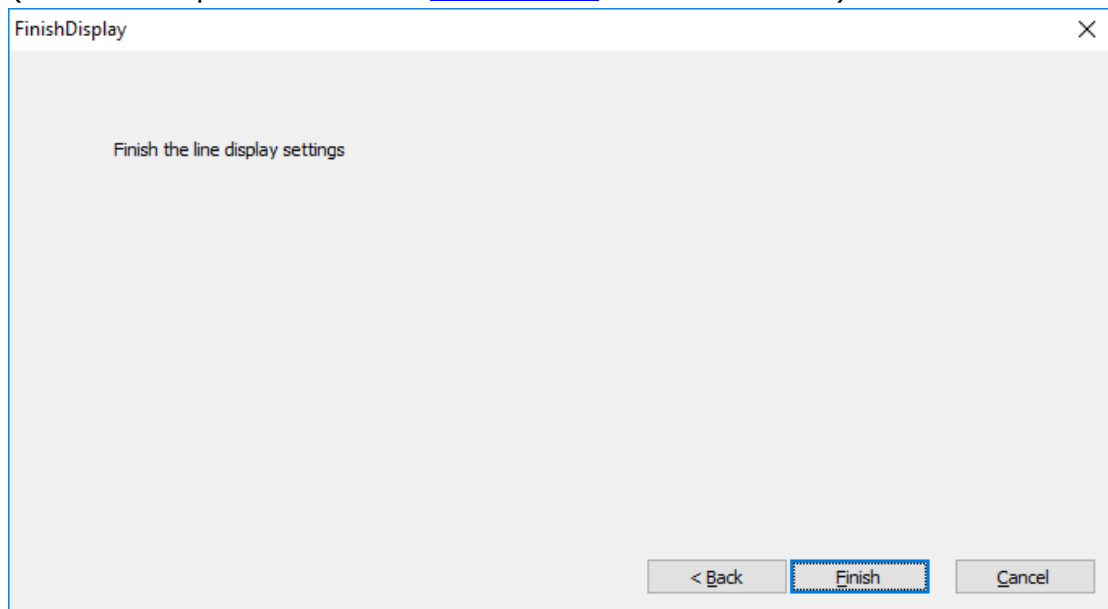
For the printer settings, refer to chapter "[3.9 Tool menu](#)".



The 'Network Settings' dialog box contains two input fields. The 'IP Address' field is set to '192 . 168 . 1 . 10' and the 'Port Number' field is set to '9200'. At the bottom right, there are three buttons: '< Back', 'Next >', and 'Cancel'. The 'Next >' button is highlighted with a blue dashed border.

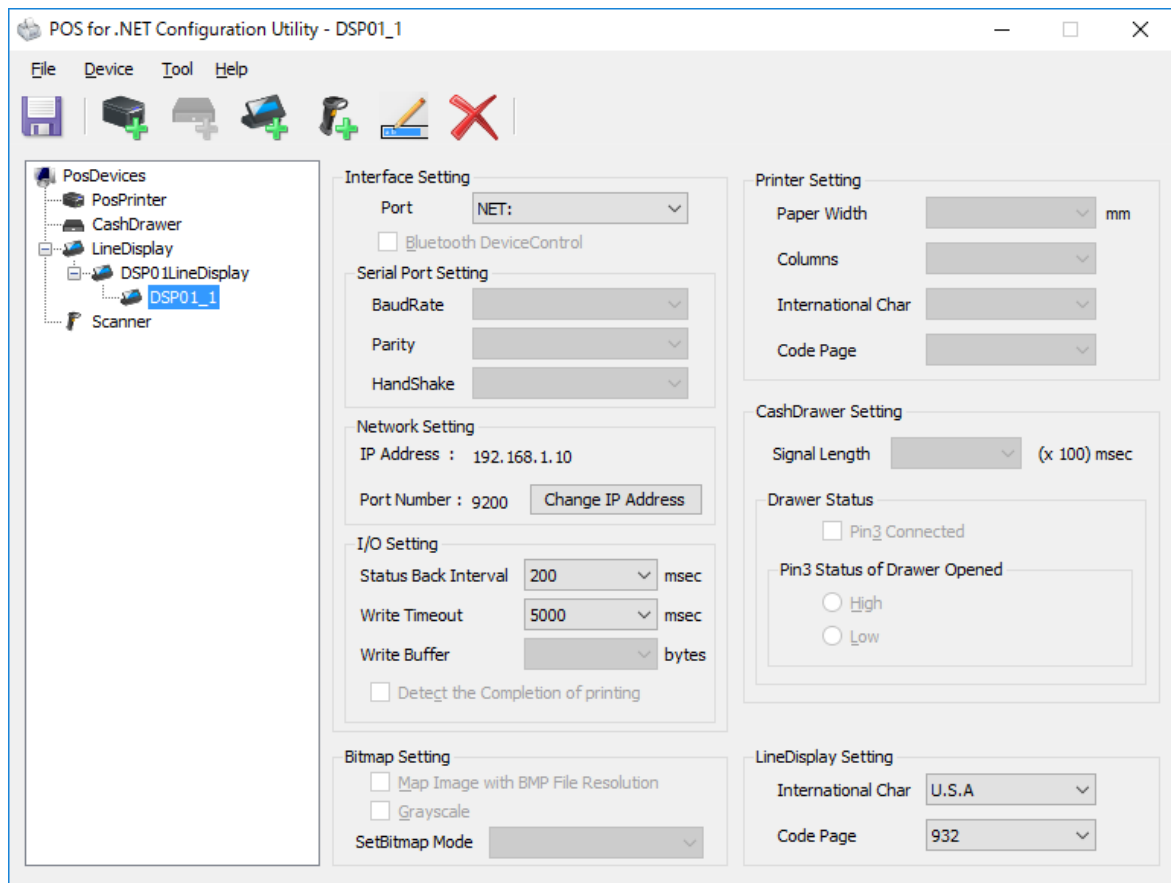
Specify the above settings and click "Next".

- 5) The "Finish the line display settings" window is displayed.
Click "Finish". The settings are not reflected to the Configuration XML file at this point.
* The settings are not reflected to the Configuration XML file until "Save" is clicked on the Main Screen.
(See the description in "Save" in ["3.8 File menu"](#) for how to "Save")



The 'FinishDisplay' dialog box has a title bar with a close button (X). The main area contains the text 'Finish the line display settings'. At the bottom right, there are three buttons: '< Back', 'Finish', and 'Cancel'. The 'Finish' button is highlighted with a blue dashed border.

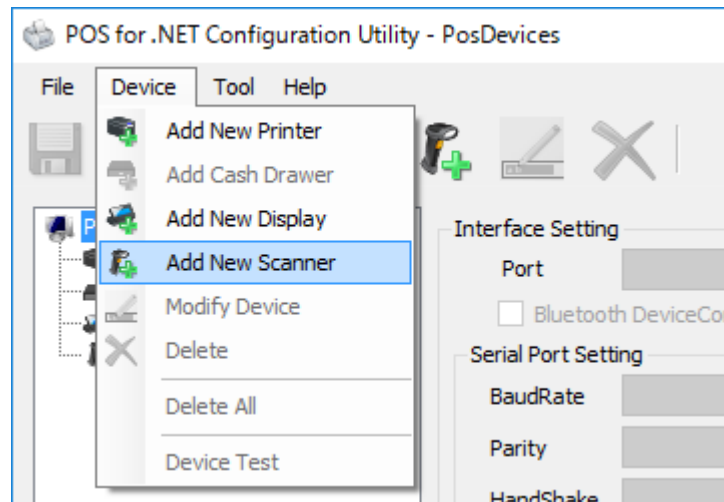
- 6) When the wizard is terminated, the registered line display is shown in "Device View" and "Setting View".
Click "Finish". The settings are not reflected to the Configuration XML file at this point.



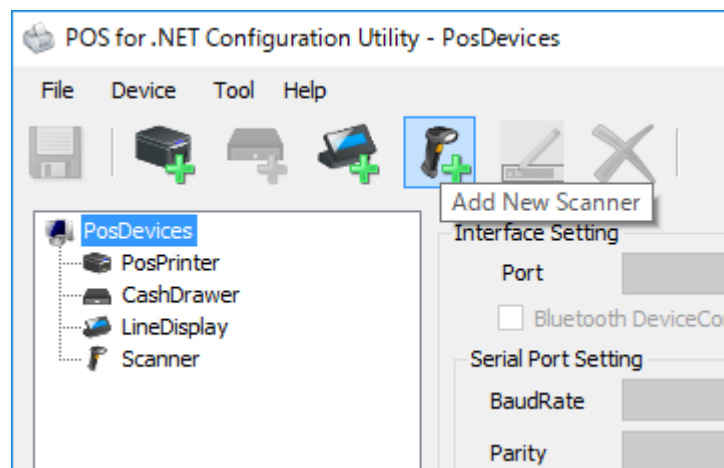
- *1 After the device is registered, the setting of each item can be changed directly through the Setting View. The settings are not reflected to the Configuration XML file until "Save" is clicked on the Main Screen. (See the description in "Save" in ["3.8 File menu"](#) for how to "Save")
- *2 Click "Change IP Address" to change "IP Address" or "Port Number" in the "Network Setting" section.

3.4. Adding New Barcode Scanner

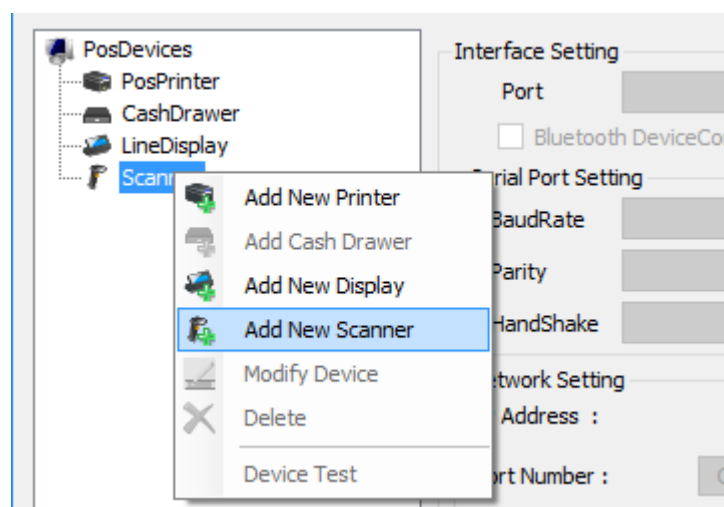
- 1) Click "Add New Scanner" in the "Device" menu.



Or, click "Add New Scanner" icon on the tool bar.



Or, click "Add New Scanner" in the context menu on the device view.



- 2) "Add New Scanner" is activated.

Enter the model and the logical device name of the barcode scanner to be added, and click "Next".
The default logical device name is the "model name of the barcode scanner+serial number of the barcode scanner".

(SCN01 is specified in this example)

3) "Details of Settings" is activated.

The setting of each item is as shown below.

Status Back Interval

You can specify the polling interval to obtain the barcode scanner status.

Setting range: 100 – 2000 msec

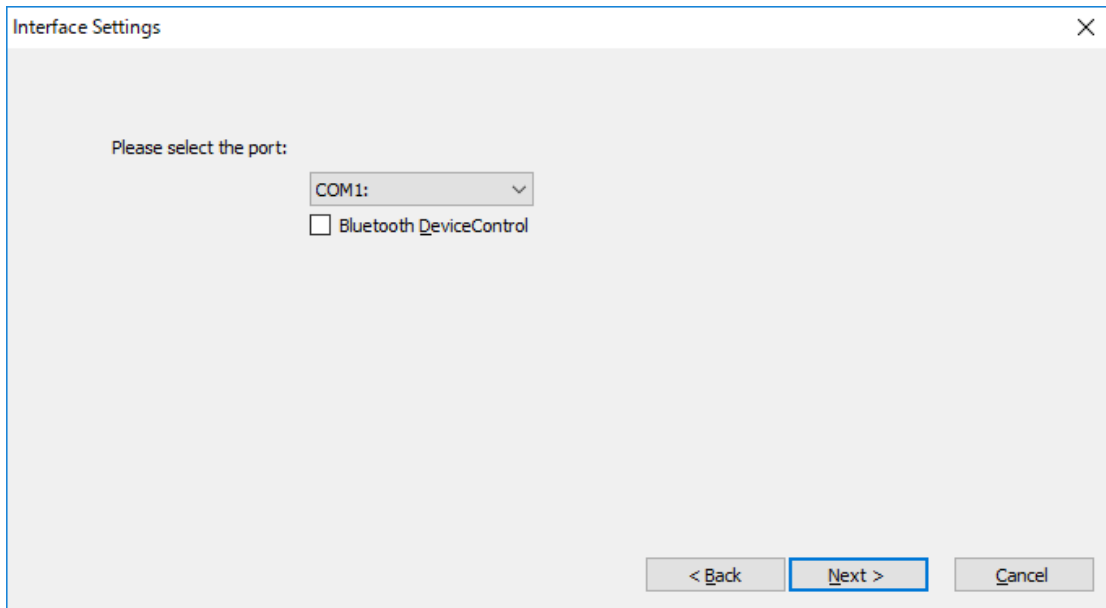
Write Timeout

You can specify the timeout period for the writing to the output port.

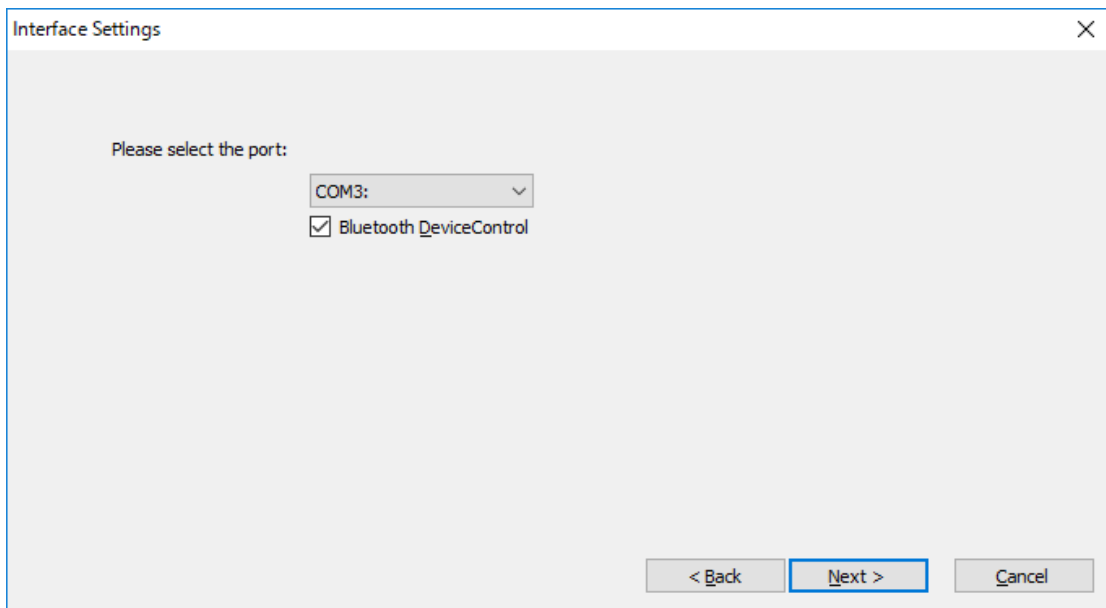
Setting range: 5,000 - 1,000,000 msec

Specify the above settings and click "Next".

- 4) The "Interface Settings" window is displayed.
Select the port to use and click "Next".



Check "Bluetooth DeviceControl" only when using a Barcode scanner via IF2-BT03/04. In other cases, uncheck the "Bluetooth DeviceControl".



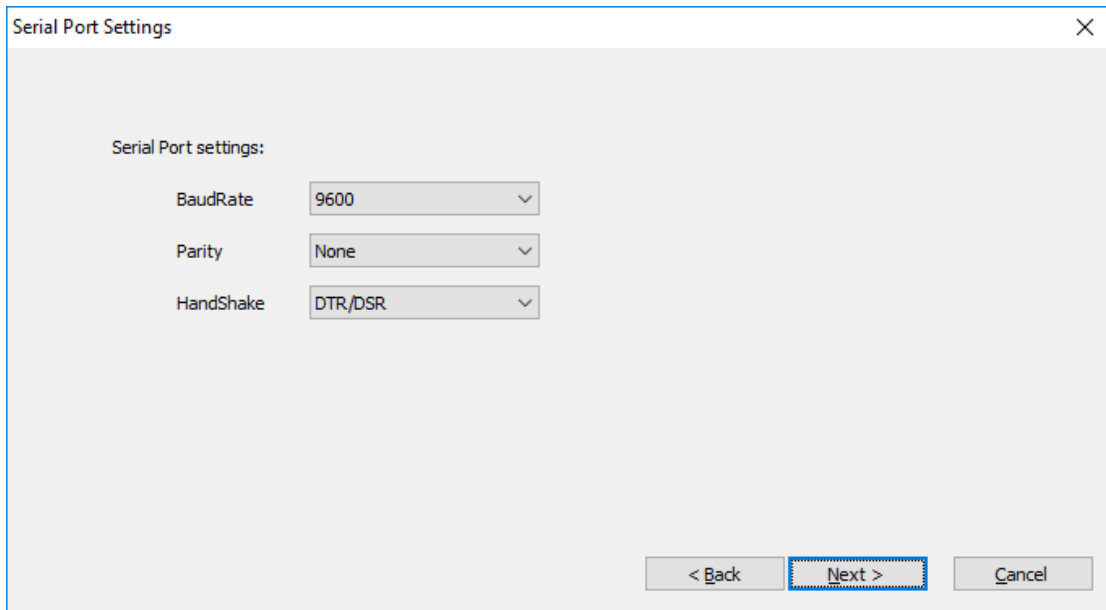
When the COM port is specified

The "Serial Port settings" window is displayed.

Specify "BaudRate", "Parity" and "Handshake", and click "Next".

- * The communication cannot be performed when the same serial port setting is not made on the barcode scanner and the terminal.

For the serial port setting of the barcode scanner, refer to the user's manual of the barcode scanner.

A screenshot of the 'Serial Port Settings' dialog box. It has a title bar with a close button (X). The main area is labeled 'Serial Port settings:'. Below this, there are three settings, each with a label and a dropdown menu: 'BaudRate' set to '9600', 'Parity' set to 'None', and 'HandShake' set to 'DTR/DSR'. At the bottom right, there are three buttons: '< Back', 'Next >' (which is highlighted with a blue dashed border), and 'Cancel'.

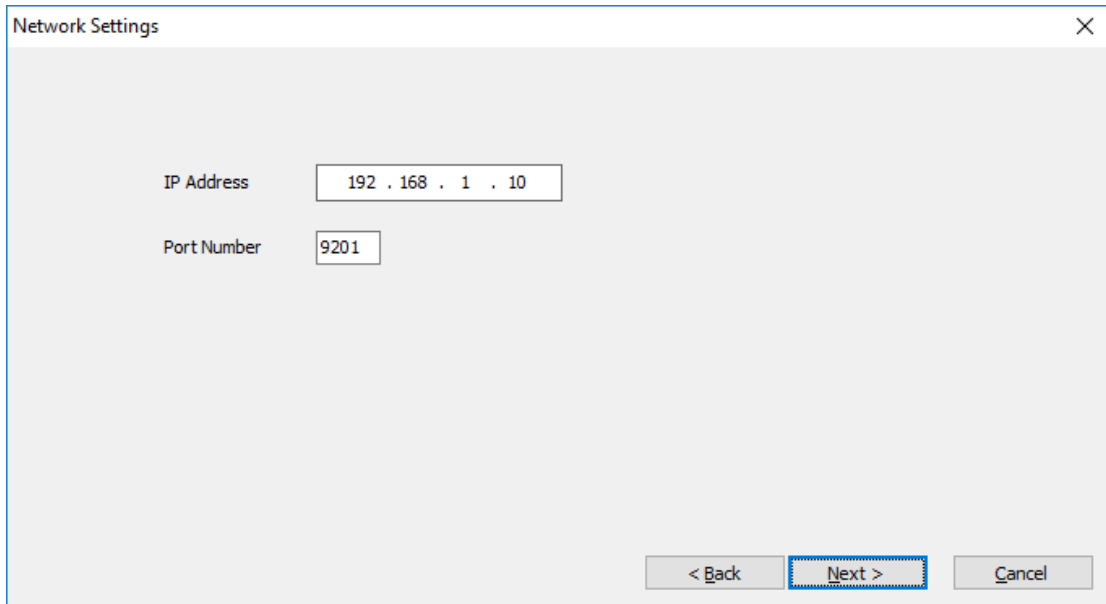
When NET is specified

The "Network Settings" window is displayed. Input the "IP Address" and the "Port Number" to use.

* After completing registration, please set the printer setting "Job receive timeout".

It is recommended to set the time in seconds to cancel the connection to "120".

For the printer settings, refer to chapter "[3.9 Tool menu](#)".

A screenshot of the 'Network Settings' dialog box. It has a title bar with a close button (X). The main area contains two input fields: 'IP Address' with the value '192 . 168 . 1 . 10' and 'Port Number' with the value '9201'. At the bottom right, there are three buttons: '< Back', 'Next >' (highlighted with a blue dashed border), and 'Cancel'.

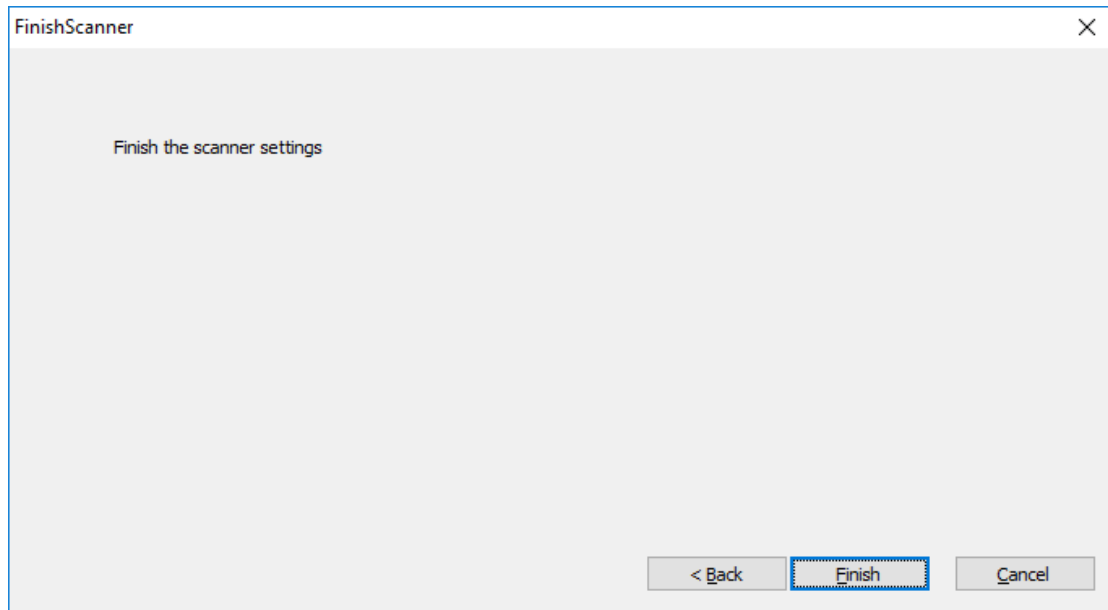
Specify the above settings and click "Next".

5) The "Finish the scanner settings" window is displayed.

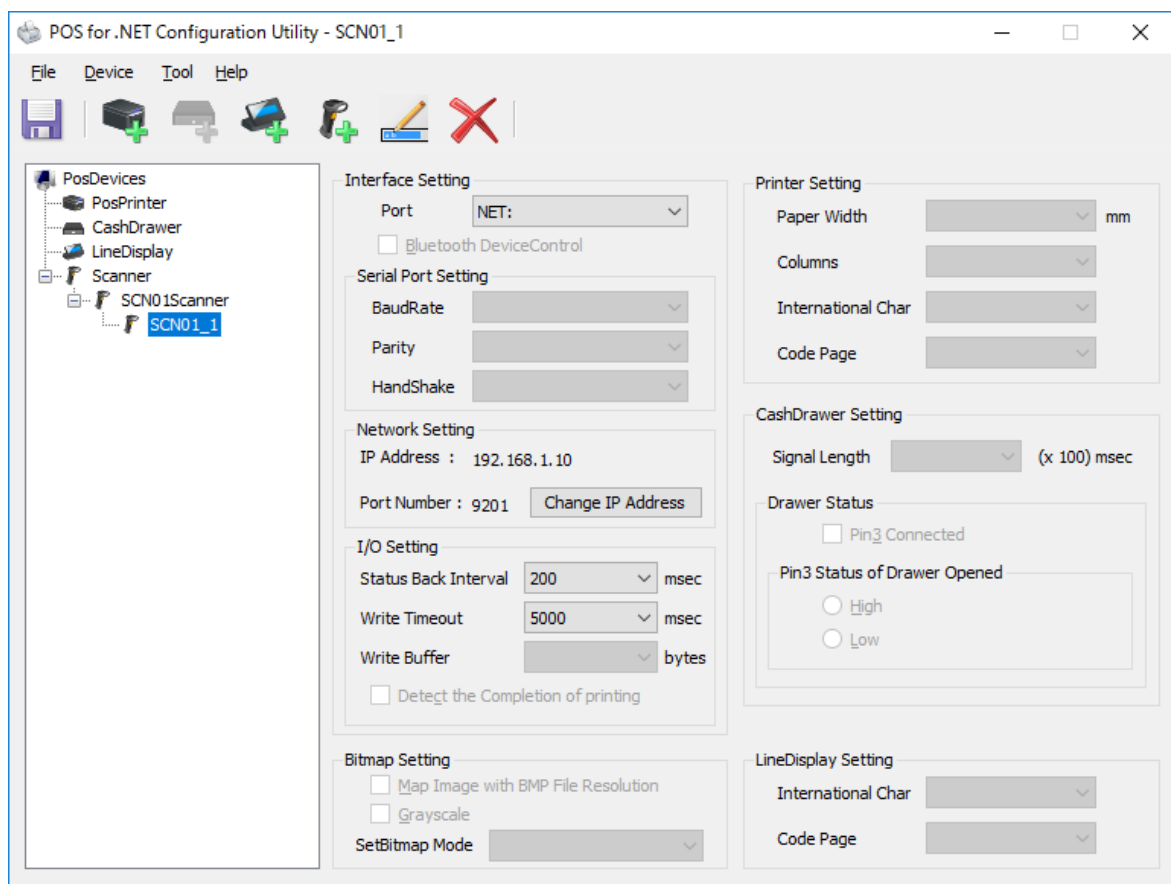
Click "Finish". The settings are not reflected to the Configuration XML file at this point.

* The settings are not reflected to the Configuration XML file until "Save" is clicked on the Main Screen.

(See the description in "Save" in ["3.8 File menu"](#) for how to "Save")



- 6) When the wizard is terminated, the registered barcode scanner is shown in "Device View" and "Setting View".



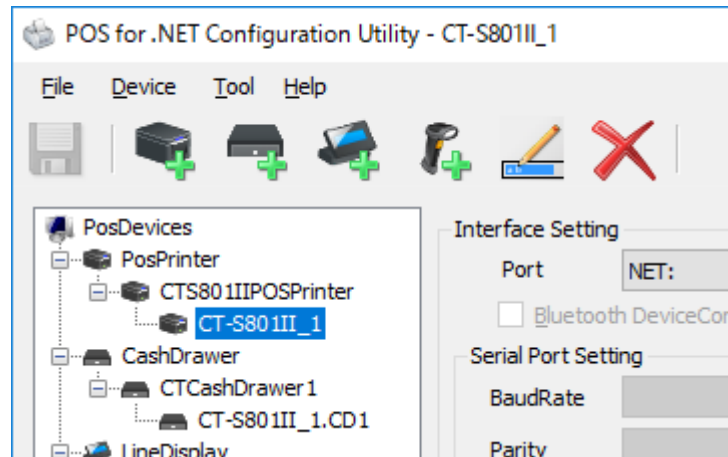
- *1 After the device is registered, the setting of each item can be changed directly through the Setting View. The settings are not reflected to the Configuration XML file until "Save" is clicked on the Main Screen. (See the description in "Save" in ["3.8 File menu"](#) for how to "Save")
- *2 Click "Change IP Address" to change "IP Address" or "Port Number" in the "Network Setting"

section.

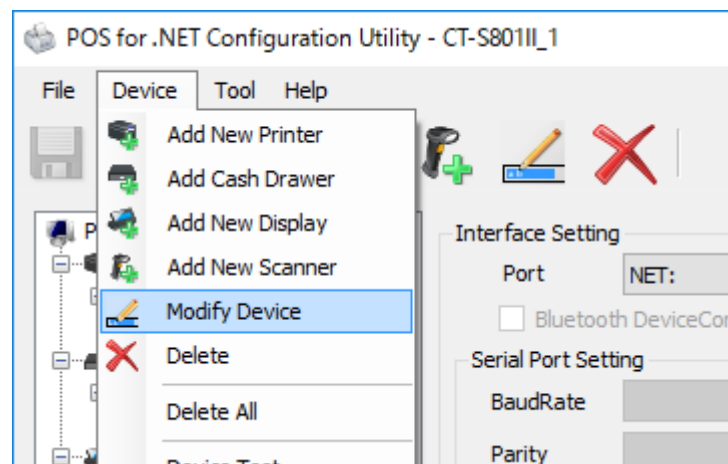
3.5. Modifying Logical Device

Modify the logical device name of the registered devices:-

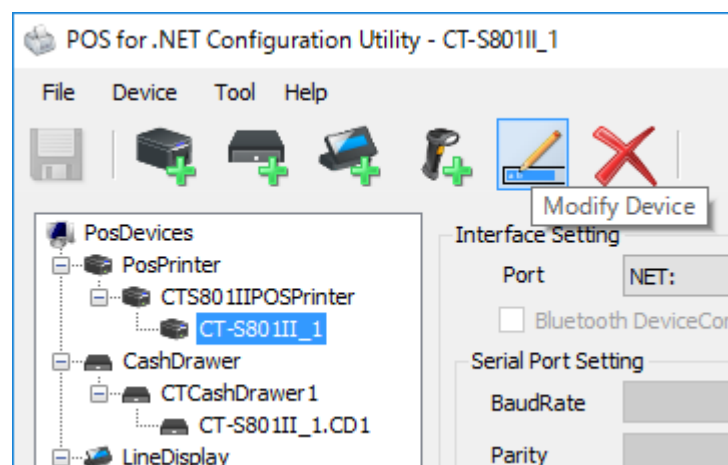
- 1) Select the device to change the logical device name from the list of "PosDevices" in the Device View.



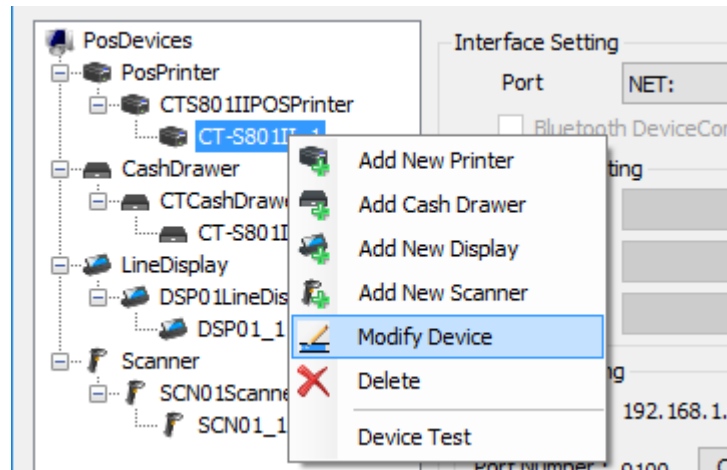
- 2) Click "Modify Device" in the "Device" menu.



Or, click the "Modify Device" icon on the tool bar.

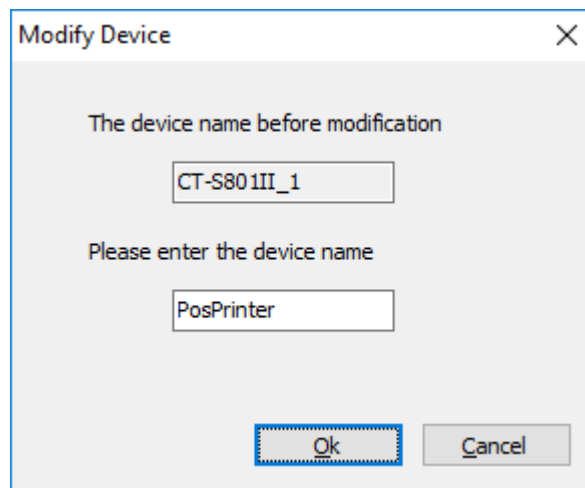


Or, Click "Modify Device" in the context menu on the Device View.



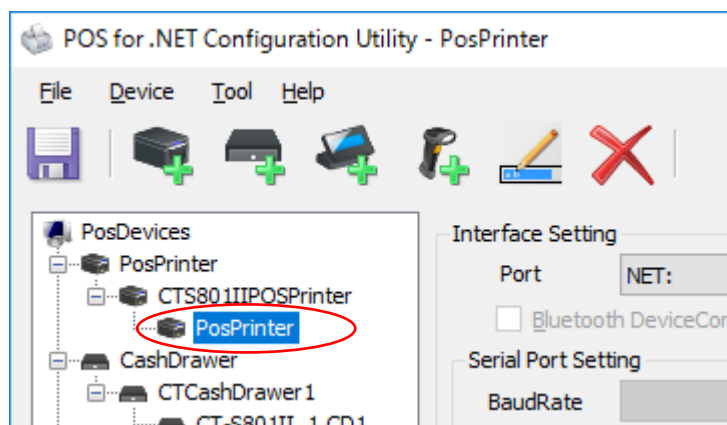
- 3) The "Modify Device" window is displayed.

The logical device name of the selected printer or cash drawer before modification is shown in "The device name before modification". Enter the new logical device name in the "Please enter the device name" textbox.



Specify the above and click "OK". Or, click "Cancel" to cancel the above setting.

- 4) When the above operation is completed, the modified logical device name is shown in the Device View. (Circled in red in the image below)



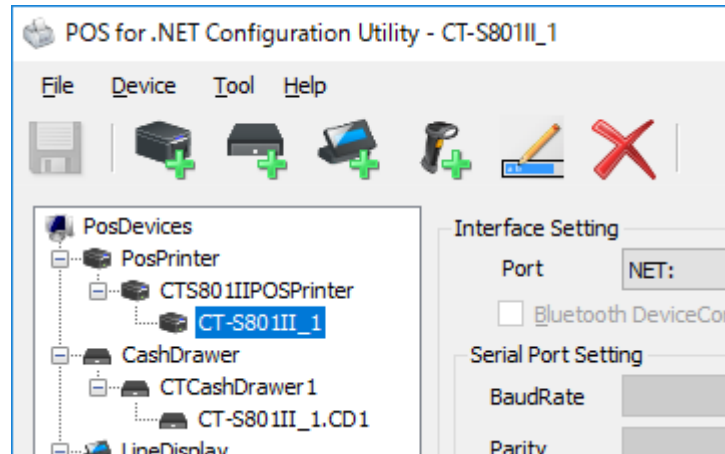
3.6. Deleting Device

Delete a registered physical device.

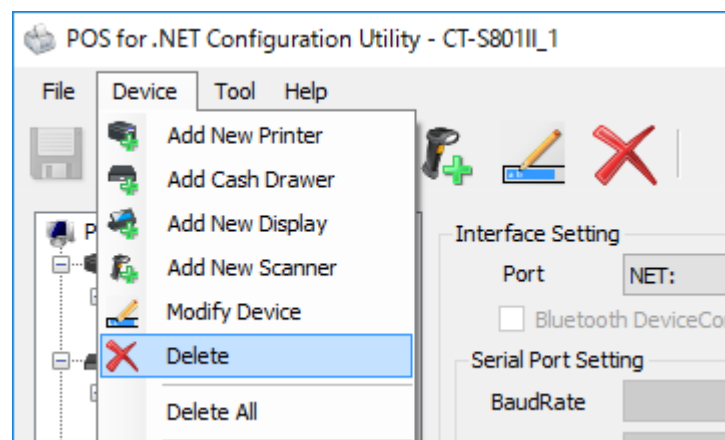
- * Even after "Delete" or "Delete All" is executed, the setting is not reflected to the Configuration XML file until "Save" is clicked on the Main Screen. (See the description in "Save" in [3.8 File menu](#) for how to "Save")

Deleting Printer

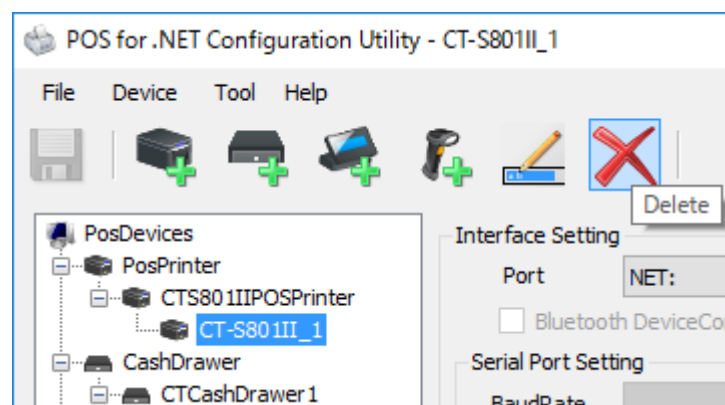
- 1) Select the printer to remove from the list of "PosPrinter" in the Device View.



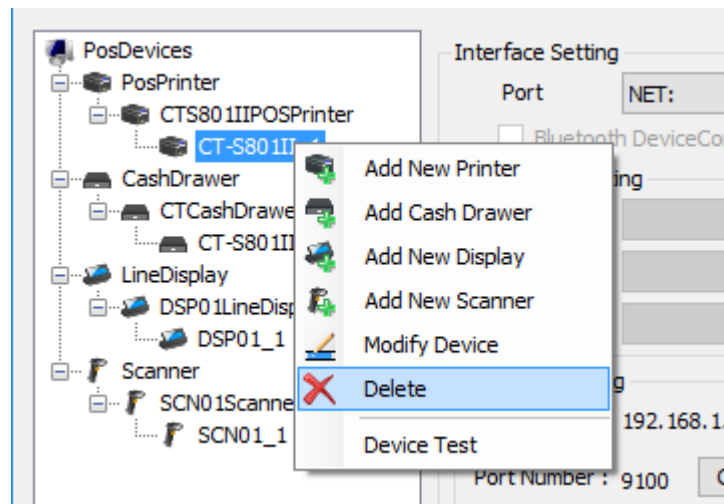
- 2) Click "Delete" in the "Device" menu.



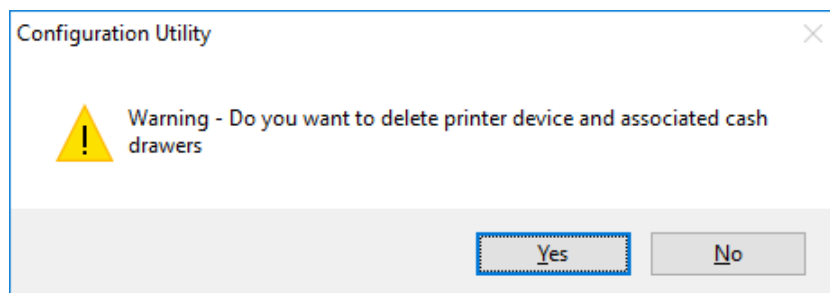
Or, click the "Delete" icon on the tool bar.



Or, click "Delete" in the context menu on the Device View.

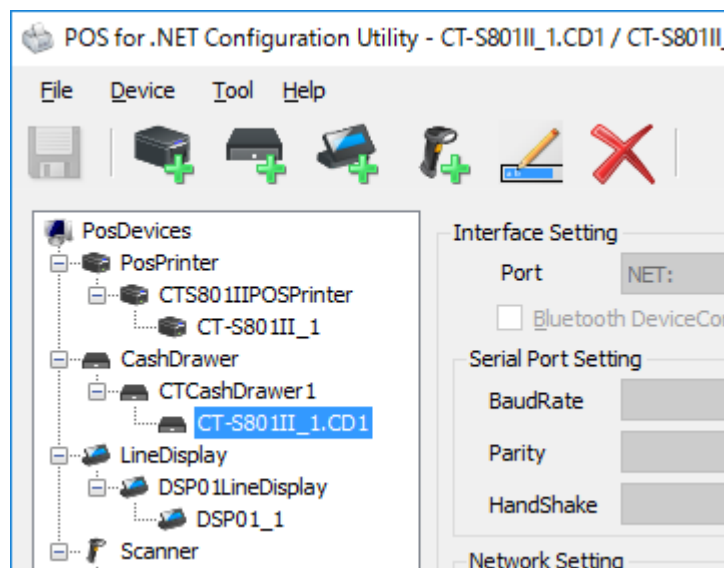


- 3) The message dialog "Warning – Do you want to delete printer device and associated cash drawers" is displayed. Click "Yes". Or, click "No" to cancel the deletion of the printer.
- * When the printer is deleted, the registered drawers are also deleted.

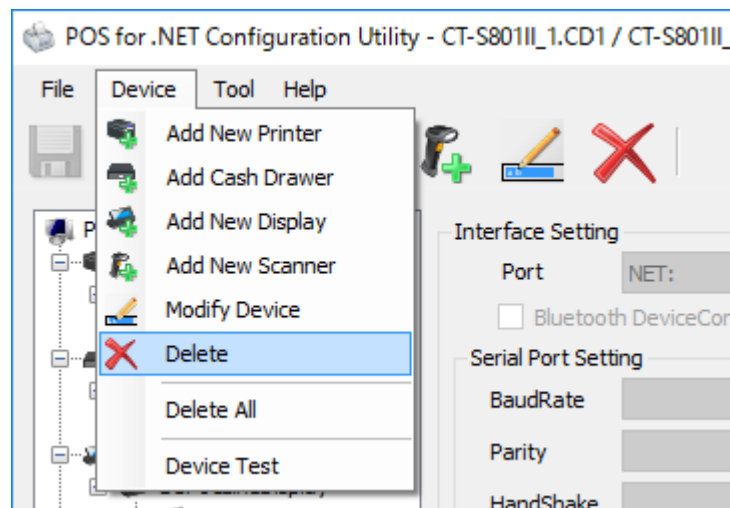


Deleting Cash Drawer

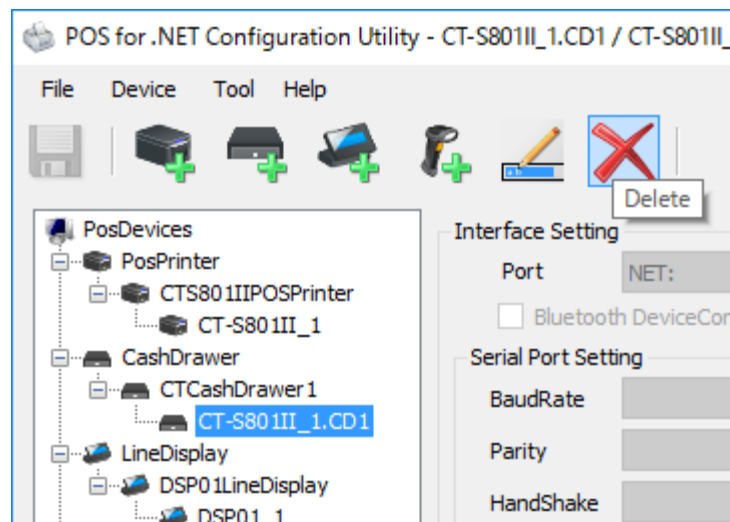
- 1) Select a cash drawer to remove from the list of "CashDrawer" in the Device View.



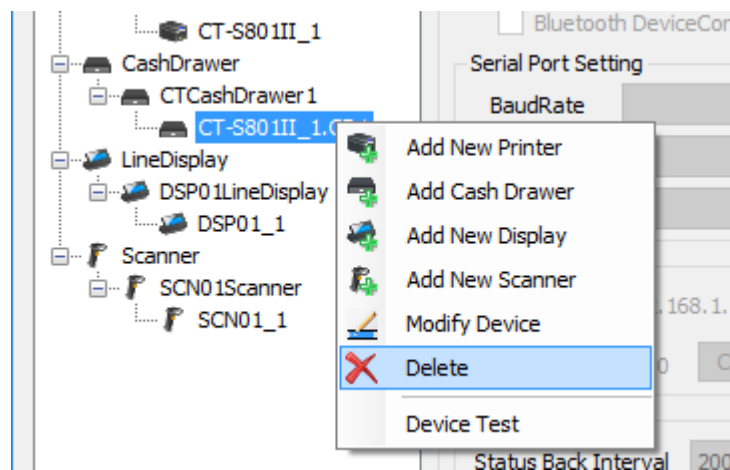
- 2) Click "Delete" in the "Device" menu.



Or, click the "Delete" icon on the tool bar.

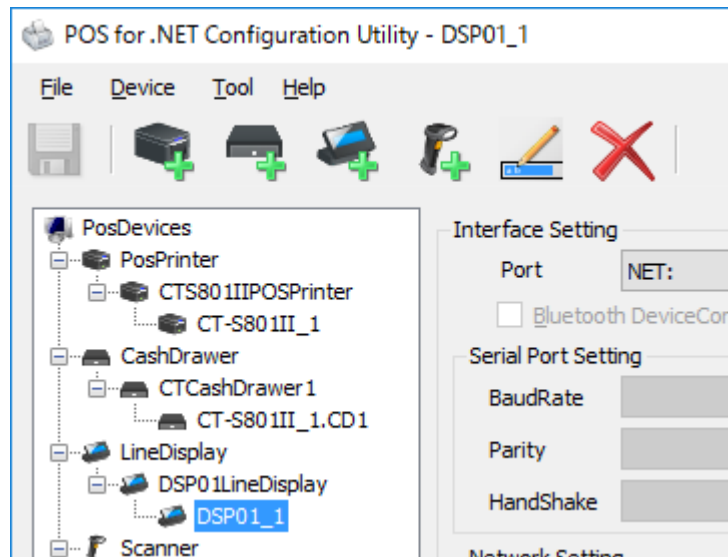


Or, click "Delete" on the context menu on the Device View.

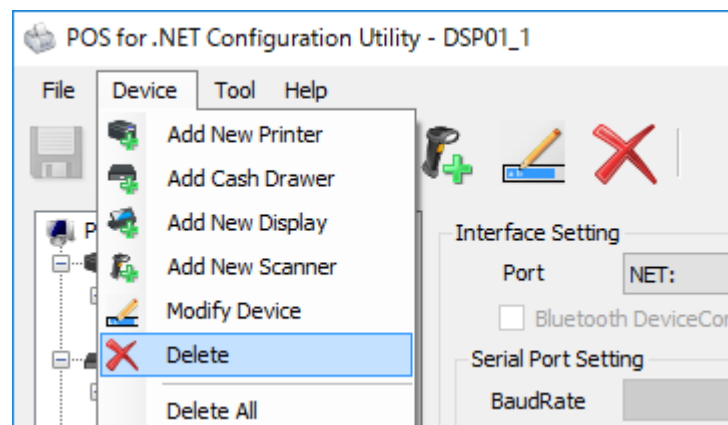


Deleting Line Display

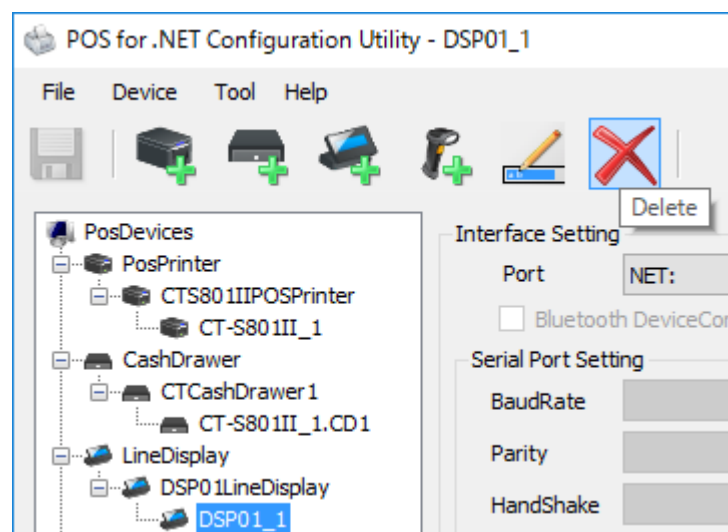
- 1) Select a line display to remove from the list of "LineDisplay" in the Device View.



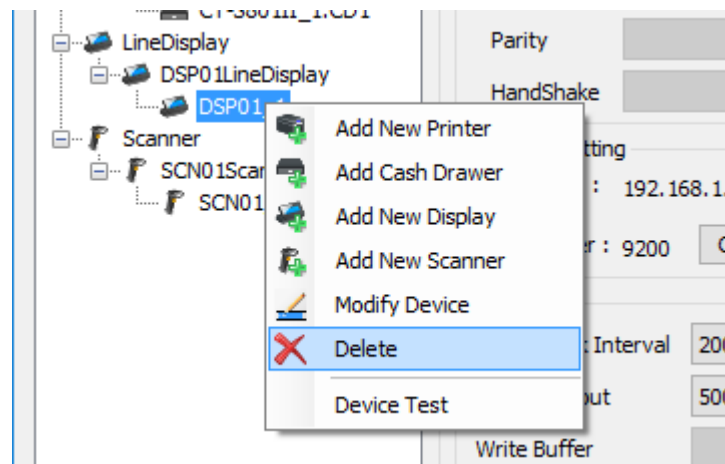
- 2) Click "Delete" in the "Device" menu.



Or, click the "Delete" icon on the tool bar.

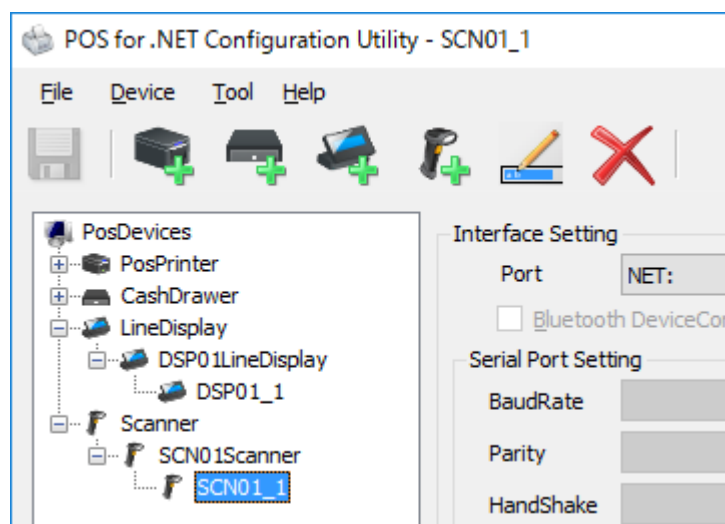


Or, click "Delete" on the context menu on the Device View.

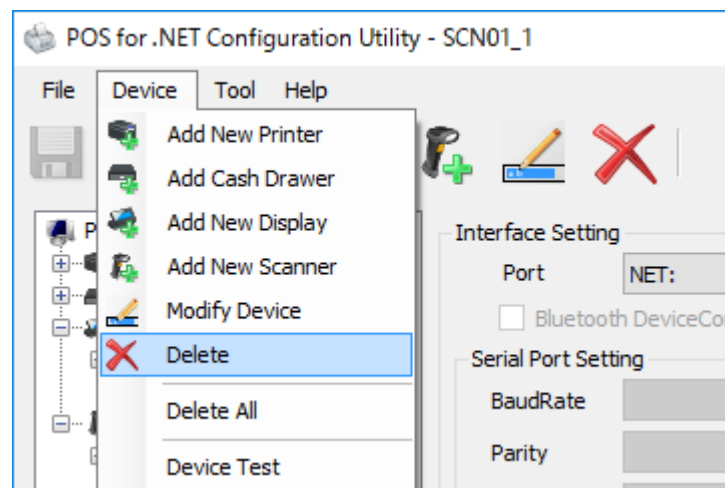


Deleting Barcode Scanner

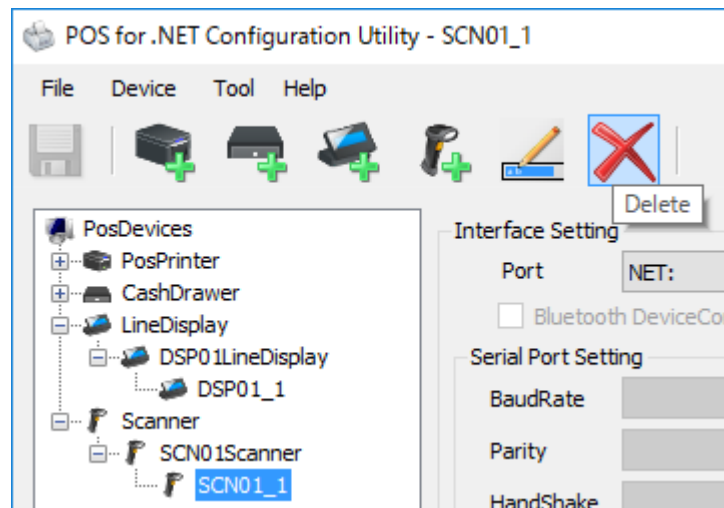
- 1) Select a barcode scanner to remove from the list of "Scanner" in the Device View.



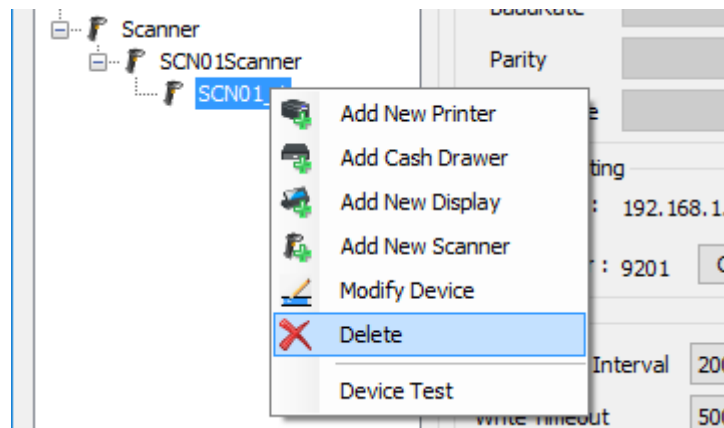
- 2) Click "Delete" in the "Device" menu.



Or, click the "Delete" icon on the tool bar.

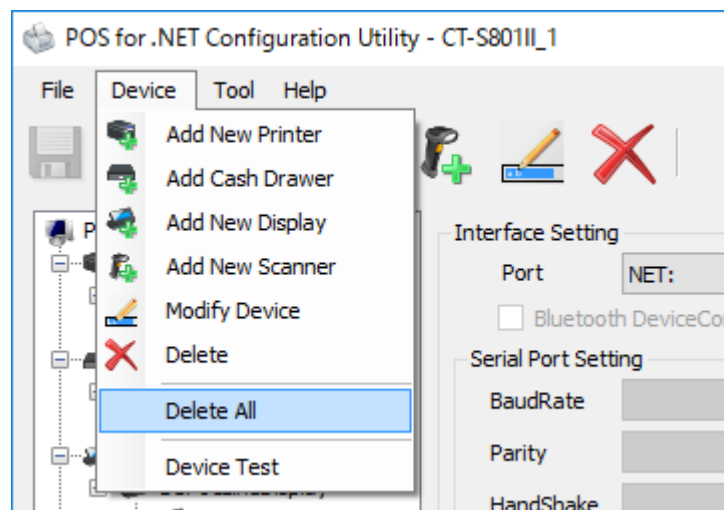


Or, click "Delete" on the context menu on the Device View.

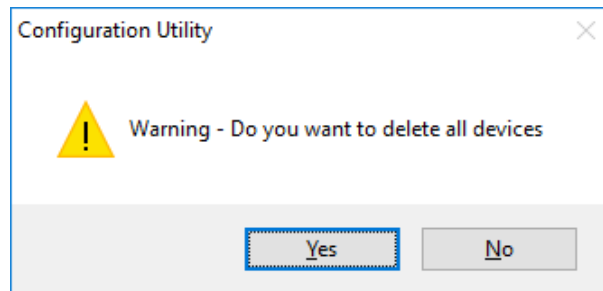


Delete all devices (Delete All)

- 1) Click "Delete All" in the "Device" menu.



- 2) The message dialog "Warning – Do you want to delete all devices" is displayed. Click "Yes". Or, click "No" to cancel the delete all.



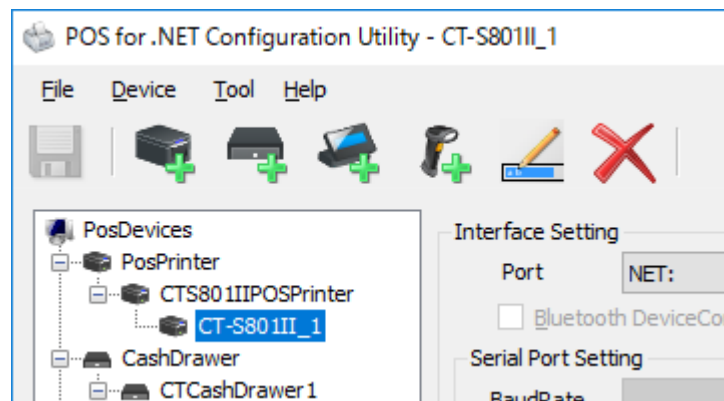
3.7. Testing Device

Test a registered physical device.

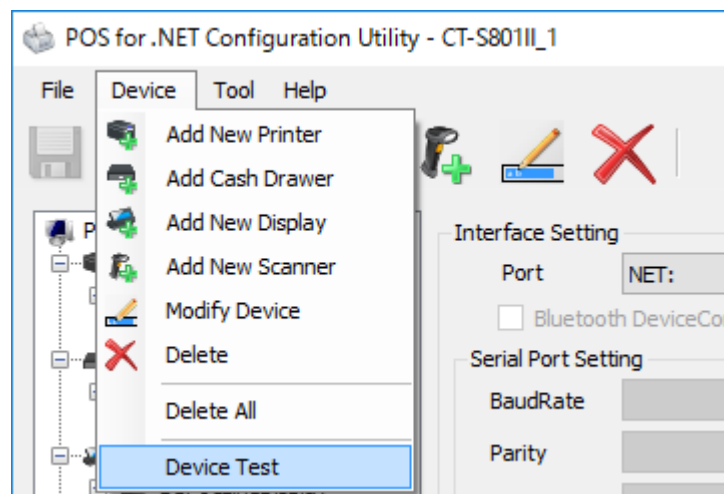
- * Before testing device, it is necessary to save the setting. (See the description in "Save" in ["3.8 File menu"](#) for how to "Save")

Testing Printer

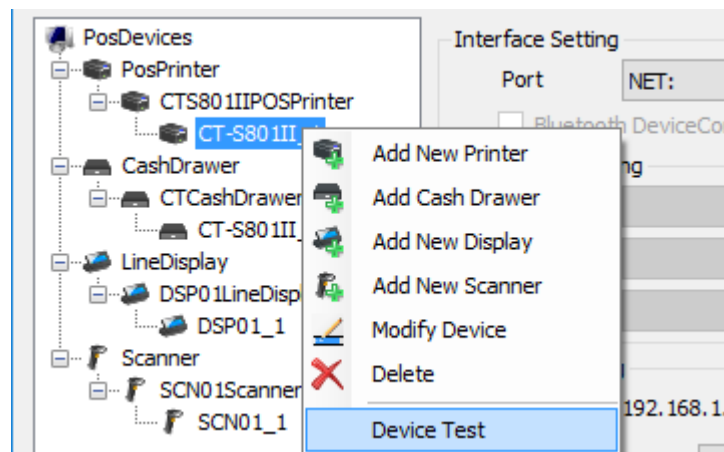
- 1) Select the printer to test from the list of "PosPrinter" in the Device View.



- 2) Click "Device Test" in the "Device" menu.

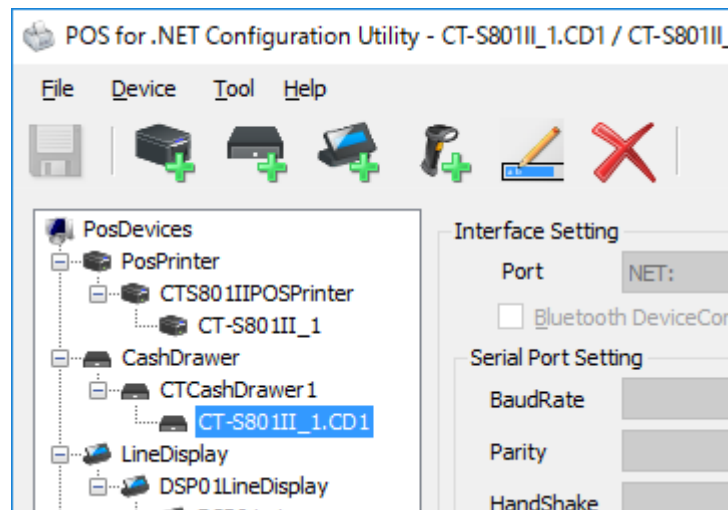


Or, click "Device Test" on the context menu on the Device View.

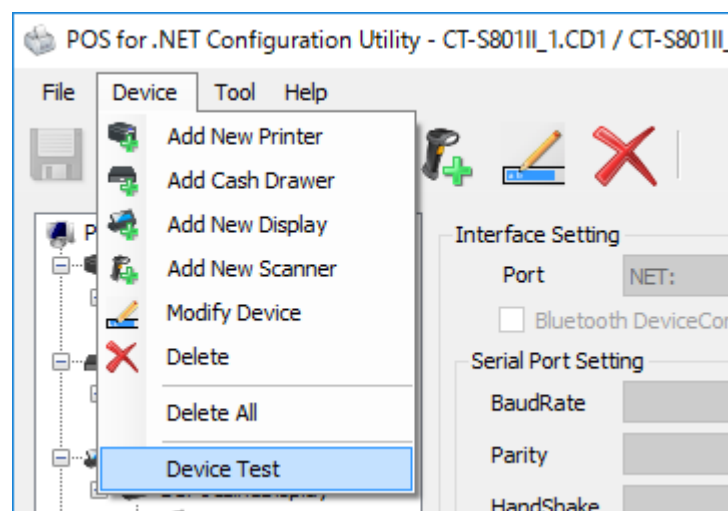


Testing Cash Drawer

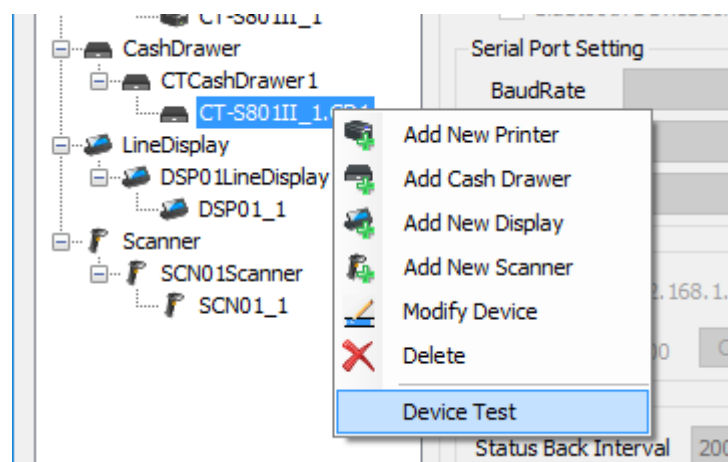
- 1) Select a cash drawer to test from the list of "CashDrawer" in the Device View.



- 2) Click "Device Test" in the "Device" menu.

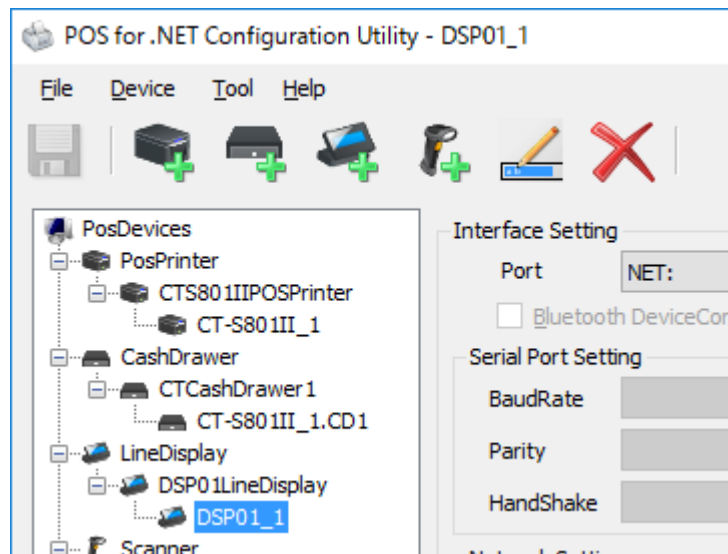


Or, click "Device Test" on the context menu on the Device View.

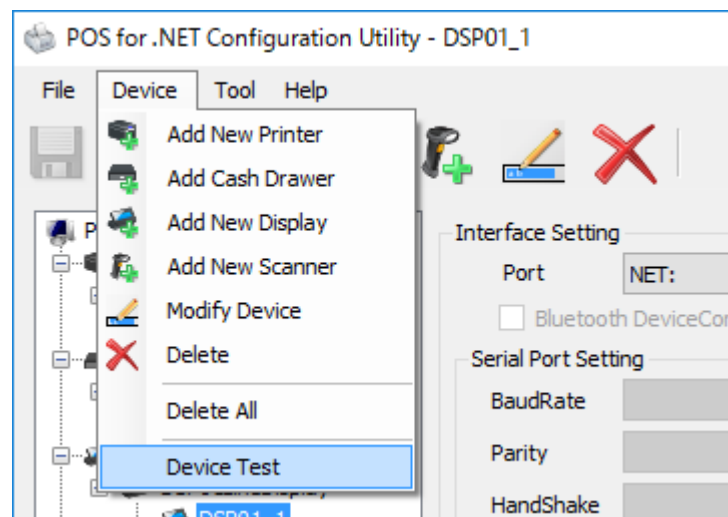


Testing Line Display

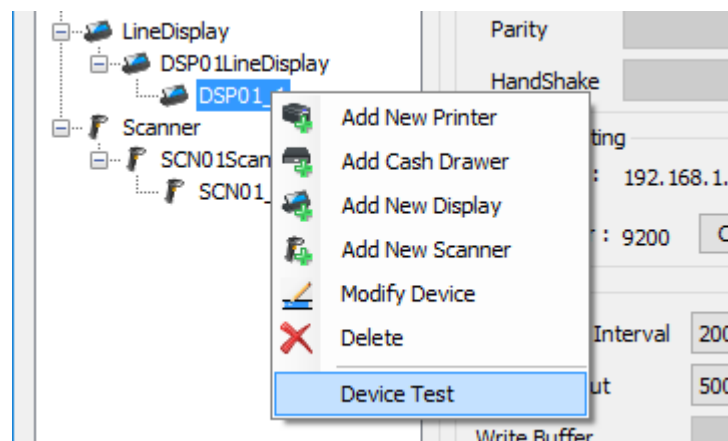
- 1) Select a line display to test from the list of "LineDisplay" in the Device View.



- 2) Click "Device Test" in the "Device" menu.

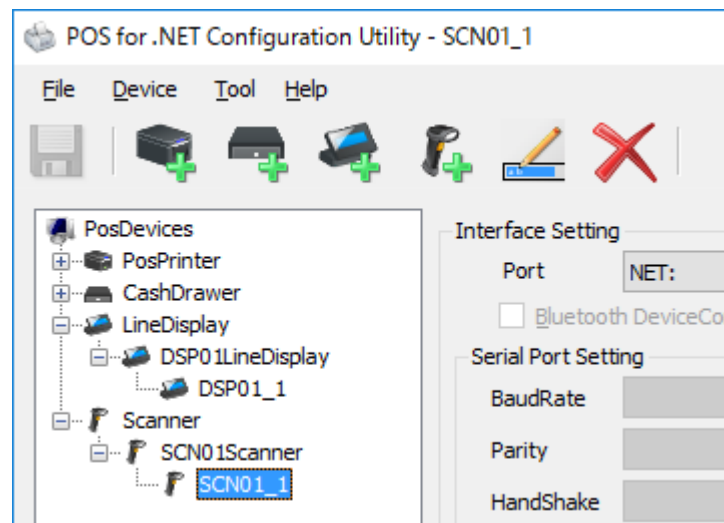


Or, click "Device Test" on the context menu on the Device View.

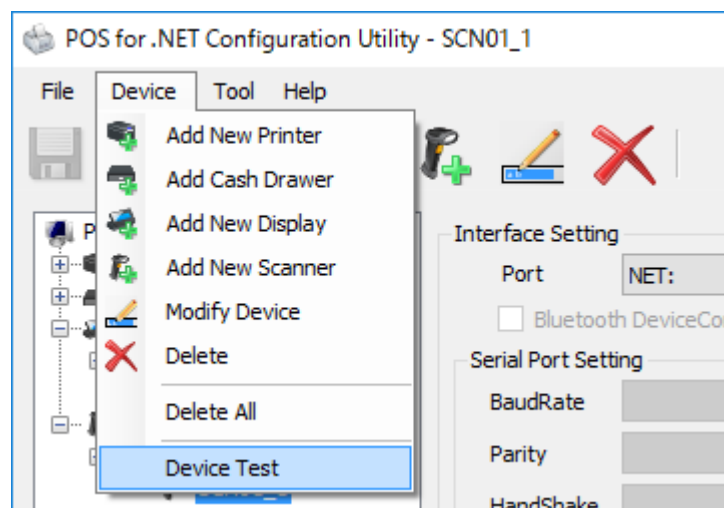


Testing Barcode Scanner

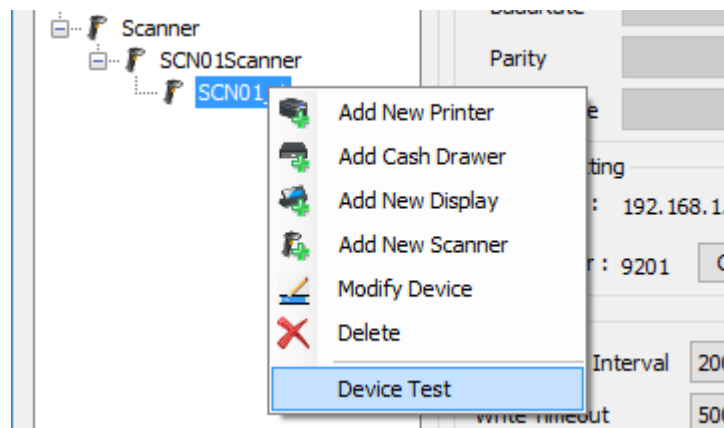
- 1) Select a barcode scanner to test from the list of "Scanner" in the Device View.



- 2) Click "Device Test" in the "Device" menu.



Or, click "Device Test" on the context menu on the Device View.



Test Results

If you can successfully run the testing, the following message is displayed.

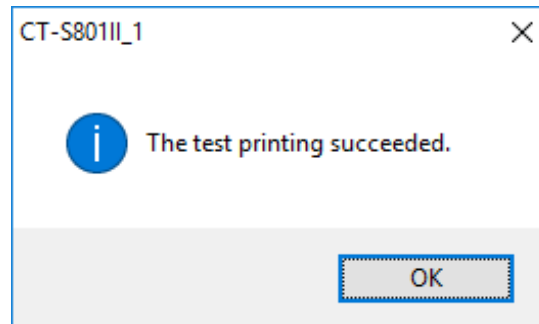
* Depending on the selected device, the following test operation is performed.

Printer - Execution of test printing.

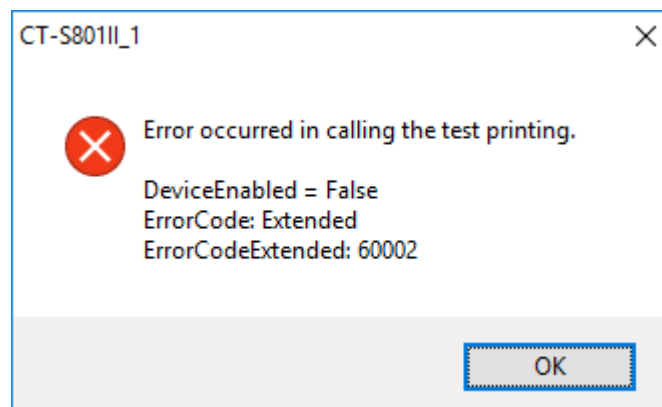
CashDrawer - Execution of CheckHealth method.

LineDisplay - Execution of CheckHealth method.

BarcodeScanner - Execution of CheckHealth method.



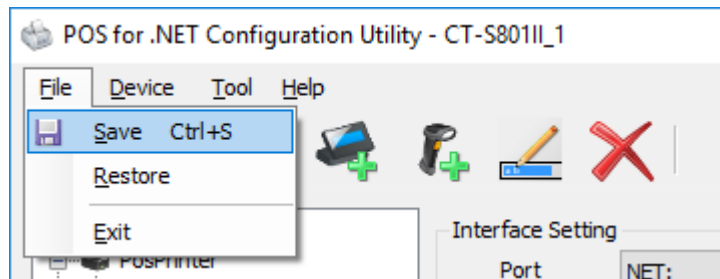
If an error occurred calling the testing, like the following error message is displayed.



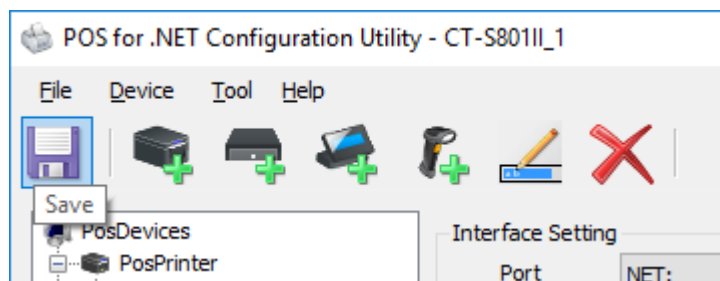
3.8. File Menu

Save

- 1) Click "Save" in the "File" menu.



Or, click the "Save" icon on the tool bar.

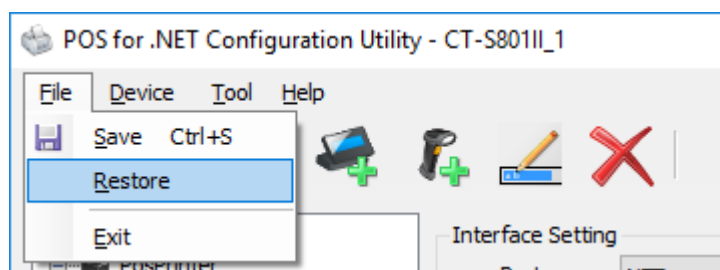


The above operation reflects the current setting to the Configuration XML file.

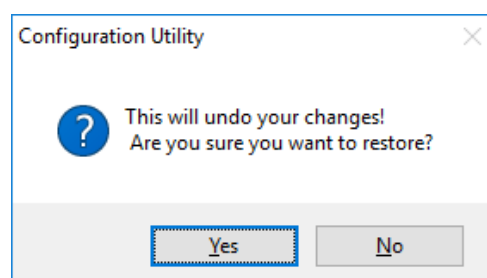
* This function can be selected only when a change is made after activation, saving or restoration.

Restore

- 1) Click "Restore" in the "File" menu.



- 2) The message dialog "This will undo your changes! Are you sure you want to restore?" is displayed. Click "Yes". Or, click "No" to cancel the restoration.

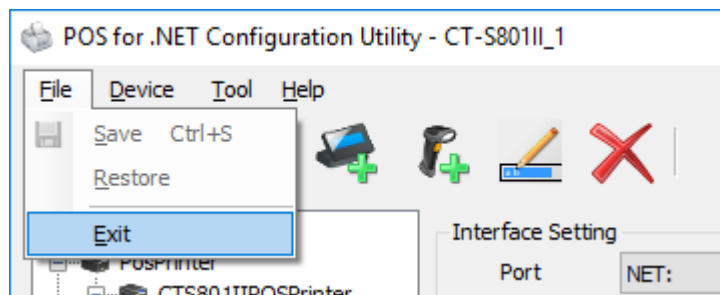


The above operation changes the current setting to the state upon the last saving. (When saving is not performed after the activation, it is changed to the state immediately after the activation.)

* This function can be selected only when a change is made after activation, saving or restoration.

Exit

- 1) Click "Exit" in the "File" menu.

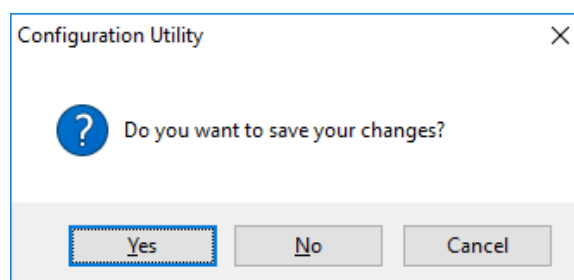


- 2) Upon exiting, the message dialog "Do you want to save your changes?" is displayed when the current setting has not been saved in the Configuration XML file (you will exit directly when the current setting is saved.)

Click "Yes" to reflect the current setting to the Configuration XML file and exit the Configuration Utility.

Click "No" to exit the Configuration Utility without reflecting the current setting to the Configuration XML file.

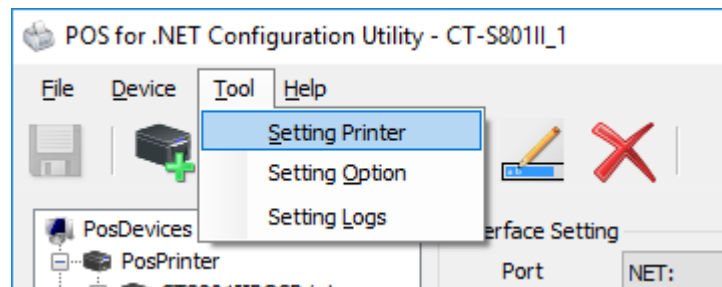
Click "Cancel" to cancel the exit and return to the Main Screen.



3.9. Tool Menu

Setting Printer

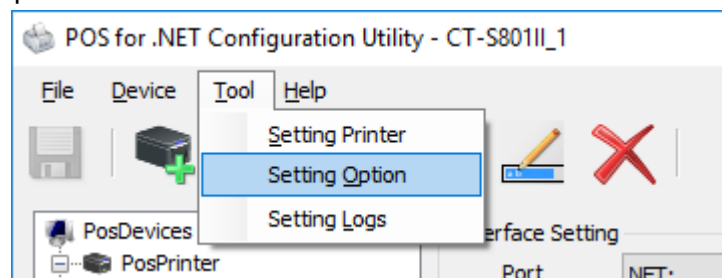
- 1) Click "Setting Printer" in the "Tool" menu.



- * The POS Printer Utility is activated when "Setting Printer" is clicked. Refer to the manual attached to the tool for the usage of this tool.
- * The POS Printer Utility can be downloaded from the link of "POS Printer Utility" of utility software for printer on our homepage.

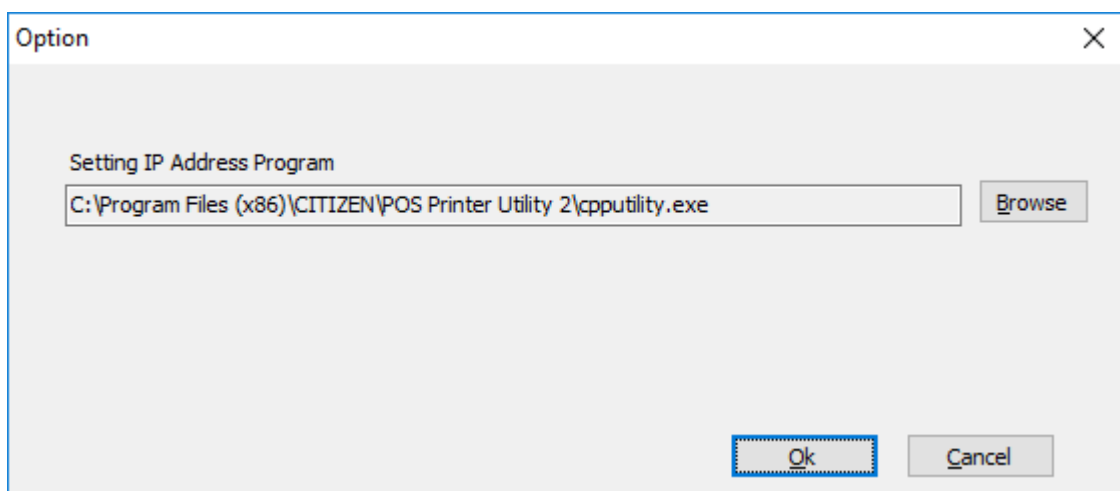
Setting Option

- 1) Click "Setting Option" in the "Tool" menu.



- 2) The "Option" dialog is displayed.

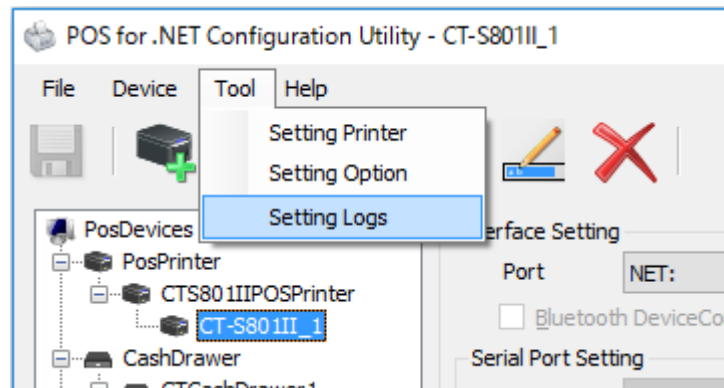
When the POS Printer Utility has not been installed under the default directory, you can specify it on this screen.



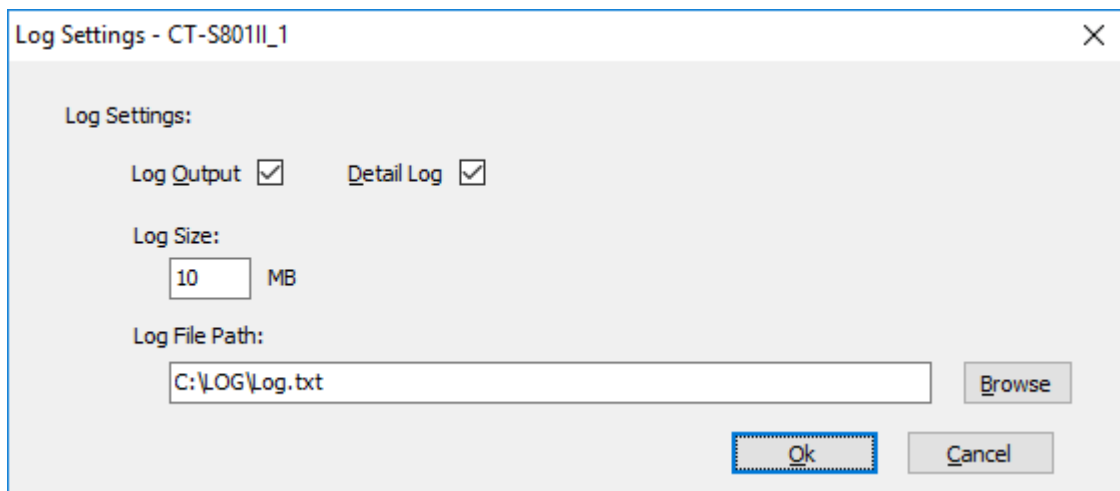
- * "C:\Program Files (x86)\CITIZEN\POS Printer Utility 2\cpputility.exe" is the default setting when the POS for .NET driver is installed.

Setting Logs

- 1) Select a device to set Log from the list in the Device View.
- 2) Click "Setting Logs" in the "Tool" menu.



- 3) The "Log Settings" dialog is displayed.
You can configure log file settings. In the initial setting, it is set not to record in the log file.



Log Output

When you enable the setting, the driver records the process contents to the log file.

Detail Log

When you enable the setting, details of print data is recorded.

Log Size

Specifies the maximum size of log file in MB. If 0 is specified, log data will be recorded without limit.

Log File Path

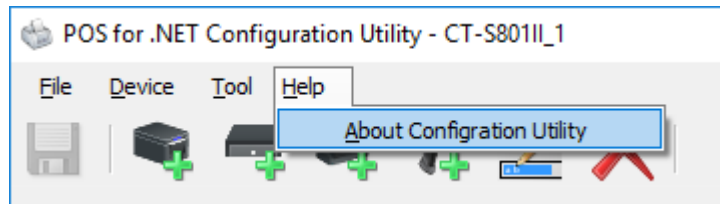
Specifies the path of the log file. And you can use "Choose a file" dialog by clicking the [Browse] button at right side.

For the details of this setting, refer to Application Development Guide of this product.

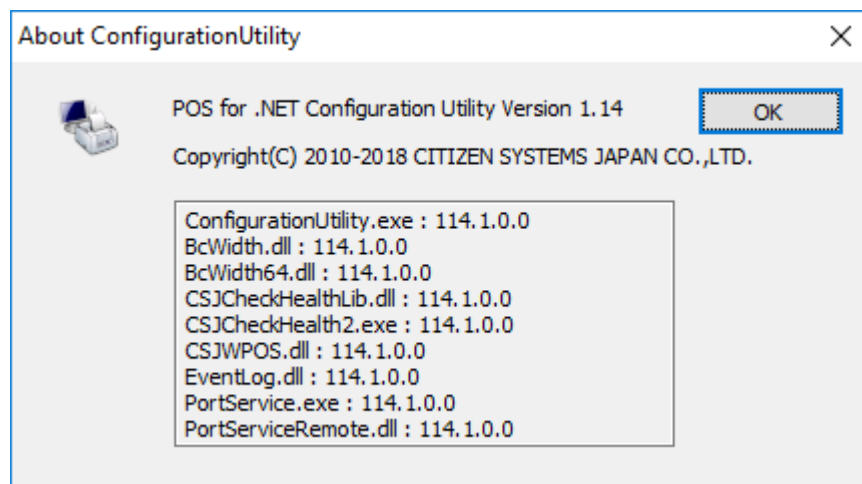
3.10. Help Menu

Version information

- 1) Click "About Configuration Utility" in the "Help" menu.



- 2) The dialog "About Configuration Utility" is displayed.
You can see the detailed version information of POS for .NET Driver / POS for .NET Configuration Utility on this dialog.



4. Printer Setting

It is the prerequisite for the use of this product that the DIP switch and the memory switch of the printer are set as listed below. For the switching and the detailed setting of each switch, refer to the user's manual of each model.

4.1. CT-D101 Series

Memory Switch Setting

MSW No.	Function	Setting	Description
1-1	Power ON Info	Valid	-
1-2	Buffer Size	4K bytes	-
1-3	Busy Condition	Full	-
1-4	Receiving Error	Print ?	-
1-5	CR Mode	Ignored	-
1-7	DSR Signal (when serial interface is used)	Invalid	-
2-2	Auto Cutter	Valid	-
2-4	Full Col Print	WaitData	-
3-1	Resume Ctrr Err	Valid	-
3-7	CBM1000 Mode	Valid	-
3-8	Resume Open Err	Close	-
4-8	Partial Only	Invalid	-
5-2	Line Pitch	1/360	-
6-1	Act. For Driver	Valid	-
7-6	DMA Control	Valid	-
8-4	Line Gap Reduce	Invalid	-
8-5	Reduced Char V/H	100% / 100%	-
9-1	Code Page	Katakana	-
9-2	Int'Char Set	Japan	-
9-4	Multi-Byte Char	SJIS:CP932(JPN)	-

4.2. CT-D150 Series

Memory Switch Setting

MSW No.	Function	Setting	Description
1-1	Power ON Info	Valid	-
1-2	Buffer Size	4K bytes	-
1-3	Busy Condition	Full	-
1-4	Receiving Error	Print ?	-
1-5	CR Mode	Ignored	-
1-7	DSR Signal (when serial interface is used)	Invalid	-
2-2	Auto Cutter	Valid	-
2-4	Full Col Print	WaitData	-
3-1	Resume Ctrr Err	Valid	-
3-7	CBM1000 Mode	Valid	-
3-8	Resume Open Err	Close	-
4-8	Partial Only	Invalid	-
5-2	Line Pitch	1/360	-
6-1	Act. For Driver	Valid	-
7-6	DMA Control	Valid	-
8-4	Line Gap Reduce	Invalid	-
8-5	Reduced Char V/H	100% / 100%	-
9-1	Code Page	Katakana	-
9-2	Int'Char Set	Japan	-
9-4	Multi-Byte Char	SJIS:CP932(JPN)	-

4.3. CT-D151 Series

Memory Switch Setting

MSW No.	Function	Setting	Description
1-1	Power ON Info	Valid	-
1-2	Buffer Size	4K bytes	-
1-3	Busy Condition	Full	-
1-4	Receiving Error	Print ?	-
1-5	CR Mode	Ignored	-
1-7	DSR Signal (when serial interface is used)	Invalid	-
1-8	INIT Signal (when serial interface is used)	Invalid	-
2-2	Auto Cutter	Valid	-
2-4	Full Col Print	WaitData	-
3-1	Resume Ctrr Err	Valid	-
3-7	CBM1000 Mode	Valid	-
3-8	Resume Open Err	Close	-
4-8	Partial Only	Invalid	-
5-2	Line Pitch	1/360	-
6-1	Act. For Driver	Valid	-
7-6	DMA Control	Valid	-
8-4	Line Gap Reduce	Invalid	-
8-5	Reduced Char V/H	100% / 100%	-
9-1	Code Page	Katakana	-
9-2	Int'Char Set	Japan	-
9-4	Multi-Byte Char	SJIS:CP932(JPN)	-
13-6	Auto Reconnect (when Bluetooth I/F is used)	Invalid	-

4.1. CT-E301 Series

Memory Switch Setting

MSW No.	Function	Setting	Description
1-1	Power ON Info	Valid	-
1-2	Buffer Size	4K bytes	-
1-3	Busy Condition	Full	-
1-4	Receiving Error	Print ?	-
1-5	CR Mode	Ignored	-
1-7	DSR Signal (when serial interface is used)	Invalid	-
2-2	Auto Cutter	Valid	-
2-4	Full Col Print	WaitData	-
3-1	Resume Ctrr Err	Valid	-
3-7	CBM1000 Mode	Valid	-
3-8	Resume Open Err	Close	-
4-8	Partial Only	Invalid	-
5-2	Line Pitch	1/360	-
6-1	Act. For Driver	Valid	-
7-6	DMA Control	Valid	-
8-4	Line Gap Reduce	Invalid	-
8-5	Reduced Char V/H	100% / 100%	-
9-1	Code Page	Katakana	-
9-2	Int'Char Set	Japan	-
9-4	Multi-Byte Char	SJIS:CP932(JPN)	-

4.2. CT-E351 Series

Memory Switch Setting

MSW No.	Function	Setting	Description
1-1	Power ON Info	Valid	-
1-2	Buffer Size	4K bytes	-
1-3	Busy Condition	Full	-
1-4	Receiving Error	Print ?	-
1-5	CR Mode	Ignored	-
1-7	DSR Signal (when serial interface is used)	Invalid	-
2-2	Auto Cutter	Valid	-
2-4	Full Col Print	WaitData	-
3-1	Resume Ctrr Err	Valid	-
3-7	CBM1000 Mode	Valid	-
3-8	Resume Open Err	Close	-
4-8	Partial Only	Invalid	-
5-2	Line Pitch	1/360	-
6-1	Act. For Driver	Valid	-
7-6	DMA Control	Valid	-
8-4	Line Gap Reduce	Invalid	-
8-5	Reduced Char V/H	100% / 100%	-
9-1	Code Page	Katakana	-
9-2	Int'Char Set	Japan	-
9-4	Multi-Byte Char	SJIS:CP932(JPN)	-

4.1. CT-E601 Series

Memory Switch Setting

MSW No.	Function	Setting	Description
1-1	Power ON Info	Valid	-
1-2	Buffer Size	4K bytes	-
1-3	Busy Condition	Full	-
1-4	Receiving Error	Print ?	-
1-5	CR Mode	Ignored	-
1-7	DSR Signal (when serial interface is used)	Invalid	-
1-8	INIT Signal (when serial interface is used)	Invalid	-
2-2	Auto Cutter	Valid	-
2-4	Full Col Print	WaitData	-
3-1	Resume Ctrr Err	Valid	-
3-7	CBM1000 Mode	Valid	-
3-8	Resume Open Err	Close	-
4-8	Partial Only	Invalid	-
5-2	Line Pitch	1/360	-
6-1	Act. For Driver	Valid	-
7-6	DMA Control	Valid	-
8-4	Line Gap Reduce	Invalid	-
8-5	Reduced Char V/H	100% / 100%	-
9-1	Code Page	Katakana	-
9-2	Int'Char Set	Japan	-
9-4	Multi-Byte Char	SJIS:CP932(JPN)	-
13-6	Auto Reconnect (when Bluetooth I/F is used)	Invalid	-

4.2. CT-E651 Series

Memory Switch Setting

MSW No.	Function	Setting	Description
1-1	Power ON Info	Valid	-
1-2	Buffer Size	4K bytes	-
1-3	Busy Condition	Full	-
1-4	Receiving Error	Print ?	-
1-5	CR Mode	Ignored	-
1-7	DSR Signal (when serial interface is used)	Invalid	-
1-8	INIT Signal (when serial interface is used)	Invalid	-
2-2	Auto Cutter	Valid	-
2-4	Full Col Print	WaitData	-
3-1	Resume Ctrr Err	Valid	-
3-7	CBM1000 Mode	Valid	-
3-8	Resume Open Err	Close	-
4-8	Partial Only	Invalid	-
5-2	Line Pitch	1/360	-
6-1	Act. For Driver	Valid	-
7-6	DMA Control	Valid	-
8-4	Line Gap Reduce	Invalid	-
8-5	Reduced Char V/H	100% / 100%	-
9-1	Code Page	Katakana	-
9-2	Int'Char Set	Japan	-
9-4	Multi-Byte Char	SJIS:CP932(JPN)	-
13-6	Auto Reconnect (when Bluetooth I/F is used)	Invalid	-

4.3. CT-S251 Series

Memory Switch Setting

MSW No.	Function	Setting	Description
1-1	Power ON Info	Valid	-
1-2	Buffer Size	4K bytes	-
1-3	Busy Condition	Full	-
1-4	Receiving Error	Print ?	-
1-5	CR Mode	Ignored	-
1-7	DSR Signal (when serial interface is used)	Invalid	-
1-8	INIT Signal (when serial interface is used)	Invalid	-
2-2	Auto Cutter	Valid	-
2-4	Full Col Print	WaitData	-
3-1	Auto cutter restore	Valid	-
3-7	CBM1000 Mode	Valid	-
3-8	Resume Open Err	Close	-
4-8	Partial Only	Invalid	-
5-2	Line Pitch	1/360	-
6-1	Act. For Driver	Valid	-
7-6	DMA Control	Valid	-
8-4	Line Gap Reduce	Invalid	-
8-5	Reduced Char	100% / 100%	-
8-6	Auto Side Shift	Invalid	-
9-1	Code Page	Katakana	-
9-2	Int'Char Set	Japan	-
9-3	Kanji	ON	-
9-4	JIS/Shift-JIS	SJIS(CP932)	-
13-6	Auto Reconnect (when Bluetooth interface is used)	Invalid	-

4.4. CT-S281 Series

DIP Switch Setting

DSW No.	Function	Setting	Description
8	INIT (when serial interface is used)	OFF	Disabled

Memory Switch Setting

MSW No.	Function	Setting	Description
1-1	Power ON Info	Valid	-
1-2	Buffer Size	4K bytes	-
1-3	Busy Condition	Full	-
1-4	Receiving Error	Print ?	-
1-5	CR Mode	Ignored	-
1-7	DSR Signal (when serial interface is used)	Invalid	-
2-2	Auto Cutter	Valid	-
2-4	Full column print	WaitData	-
3-1	Auto cutter restore	Valid	-
3-7	CBM270 Mode	Valid	-
3-8	Resume Open Err	Close	-
4-8	Partial Only	Invalid	-
9-1	Code Page	Katakana	-
9-2	Int'Char Set	Japan	-
9-3	Kanji	ON	-
9-4	JIS/Shift-JIS	Shift-JIS	-
13-6	Auto Reconnect (when Bluetooth interface is used)	Invalid	-

4.5. CT-S310II Series

Memory Switch Setting

MSW No.	Function	Setting	Description
1-1	Power ON Info	Valid	-
1-2	Buffer Size	4K bytes	-
1-3	Busy Condition	Full	-
1-4	Receiving Error	Print ?	-
1-5	CR Mode	Ignored	-
1-7	DSR Signal (when serial interface is used)	Invalid	-
2-2	Auto cutter operation	Valid	-
2-4	Full Col Print	WaitData	-
3-1	Auto Cutter	Valid	-
3-7	CBM1000 Mode	Valid	-
3-8	Resume Open Err	Close	-
4-8	Forced partial	Invalid	-
5-2	Line Pitch	1/360	-
6-1	Act. For Driver	Valid	-
7-6	DMA Control	Valid	-
8-4	Line Gap Reduce	Invalid	-
8-5	Reduced Char	100% / 100%	-
9-1	Code Page	Katakana	-
9-2	Int'Char Set	Japan	-
9-3	Kanji	ON	-
9-4	JIS/Shift-JIS	Shift JIS	-

4.6. CT-S601/651/801/851 Series

DIP Switch Setting

DSW No.	Function	Setting	Description
8	INIT (when serial interface is used)	OFF	Disabled

Memory Switch Setting

MSW No.	Function	Setting	Description
1-1	Power ON Info	Valid	-
1-2	Buffer Size	4K bytes	-
1-3	Busy Condition	Full	-
1-4	Receiving Error	Print ?	-
1-5	CR Mode	Ignored	-
1-7	DSR Signal (when serial interface is used)	Invalid	-
1-8	INIT Signal (when serial interface is used)	Invalid	-
2-2	Auto Cutter	Valid	-
2-4	Full Col Print	WaitData	-
3-1	Auto cutter restore	Close	-
3-2	PE output at PNE (when parallel IF are used)	Invalid	-
3-3	Parallel 31Pin (when USB and parallel IF are used)	Valid	-
3-7	CBM1000 Mode	Valid	-
3-8	Resume Open Err	Close	-
4-8	Forced partial	Invalid	-
5-2	Line Pitch	1/360	-
6-1	Act. For Driver	Valid	-
7-6	DMA Control	Valid	-
9-1	Code Page	Katakana	-
9-2	Int'Char Set	Japan	-
9-3	Kanji	Enable	-
9-4	JIS/Shift-JIS	Shift JIS	-
10-3	ACK Timing (when USB and parallel IF are used)	Before BUSY	-

4.7. CT-S601II/651II/801II/851II Series

DIP Switch Setting

DSW No.	Function	Setting	Description
8	INIT (when serial interface is used)	OFF	Disabled

Memory Switch Setting

MSW No.	Function	Setting	Description
1-1	Power ON Info	Valid	-
1-2	Buffer Size	4K bytes	-
1-3	Busy Condition	Full	-
1-4	Receiving Error	Print ?	-
1-5	CR Mode	Ignored	-
1-7	DSR Signal (when serial interface is used)	Invalid	-
1-8	INIT Signal (when serial interface is used)	Invalid	-
2-2	Auto cutter operation	Valid	-
2-4	Full Col Print	WaitData	-
3-1	Auto Cutter	Valid	-
3-2	PE output at PNE (when parallel IF are used)	Invalid	-
3-3	Parallel 31Pin (when USB and parallel IF are used)	Valid	-
3-7	CBM1000 Mode	Valid	-
3-8	Resume Open Err	Close	-
4-8	Forced partial	Invalid	-
5-2	Line Pitch	1/360	-
6-1	Act. For Driver	Valid	-
7-6	DMA Control	Valid	-
8-4	Line Gap Reduce	Invalid	-
8-5	Reduced Char	100% / 100%	-
9-1	Code Page	Katakana	-
9-2	Int'Char Set	Japan	-
9-4	Multi-byte Char	SJIS:CP932(JPN)	-
10-3	ACK Timing (when USB and parallel IF are used)	Before BUSY	-
13-6	Auto Reconnect (when Bluetooth interface is used)	Invalid	-

4.8. CT-S801III/851III Series

DIP Switch Setting

DSW No.	Function	Setting	Description
8	INIT (when serial interface is used)	OFF	Disabled

Memory Switch Setting

MSW No.	Function	Setting	Description
1-1	Power ON Info	Valid	-
1-2	Buffer Size	4K bytes	-
1-3	Busy Condition	Full	-
1-4	Receiving Error	Print ?	-
1-5	CR Mode	Ignored	-
1-7	DSR Signal (when serial interface is used)	Invalid	-
1-8	INIT Signal (when serial interface is used)	Invalid	-
2-2	Auto cutter operation	Valid	-
2-4	Full Col Print	WaitData	-
3-1	Auto Cutter	Valid	-
3-2	PE output at PNE (when parallel IF are used)	Invalid	-
3-3	Parallel 31Pin (when USB and parallel IF are used)	Valid	-
3-7	CBM1000 Mode	Valid	-
3-8	Resume Open Err	Close	-
4-8	Forced partial	Invalid	-
5-2	Line Pitch	1/360	-
6-1	Act. For Driver	Valid	-
7-6	DMA Control	Valid	-
8-4	Line Gap Reduce	Invalid	-
8-5	Reduced Char	100% / 100%	-
9-1	Code Page	Katakana	-
9-2	Int'Char Set	Japan	-
9-4	Multi-byte Char	SJIS:CP932(JPN)	-
10-3	ACK Timing (when USB and parallel IF are used)	Before BUSY	-
13-6	Auto Reconnect (when Bluetooth interface is used)	Invalid	-

4.9. CT-S751 Series

Memory Switch Setting

MSW No.	Function	Setting	Description
1-1	Power ON Info	Valid	-
1-2	Buffer Size	4K bytes	-
1-3	Busy Condition	Full	-
1-4	Receiving Error	Print ?	-
1-5	CR Mode	Ignored	-
1-7	DSR Signal (when serial interface is used)	Invalid	-
1-8	INIT Signal (when serial interface is used)	Invalid	-
2-2	Auto Cutter	Valid	-
2-4	Full Col Print	WaitData	-
3-1	Resume Ctrr Err	Valid	-
3-7	CBM1000 Mode	Valid	-
3-8	Resume Open Err	Close	-
4-8	Partial Only	Invalid	-
5-2	Line Pitch	1/360	-
6-1	Act. For Driver	Valid	-
7-6	DMA Control	Valid	-
8-4	Line Gap Reduce	Invalid	-
8-5	Reduced Char V/H	100% / 100%	-
9-1	Code Page	Katakana	-
9-2	Int'Char Set	Japan	-
9-4	Multi-Byte Char	SJIS:CP932(JPN)	-
13-6	Auto Reconnect (when Bluetooth I/F is used)	Invalid	-

4.10. CT-S2000 Series

DIP Switch Setting

DSW No.	Function	Setting	Description
8	INIT (when serial interface is used)	OFF	Disabled

Memory Switch Setting

MSW No.	Function	Setting	Description
1-1	Power ON Info	Valid	-
1-2	Buffer Size	4K bytes	-
1-3	Busy Condition	Full	-
1-4	Receiving Error	Print ?	-
1-5	CR Mode	Ignored	-
1-7	DSR Signal (when serial interface is used)	Invalid	-
1-8	INIT Signal (when serial interface is used)	Invalid	-
2-2	Auto cutter operation	Valid	-
2-4	Full Col Print	WaitData	-
3-1	Auto Cutter	Valid	-
3-3	Parallel 31Pin (when USB and parallel IF are used)	Valid	-
3-7	CBM1000 Mode	Valid	-
3-8	Resume Open Err	Close	-
4-8	Forced partial	Invalid	-
5-2	Line Pitch	1/360	-
7-6	DMA Control	Valid	-
9-1	Code Page	Katakana	-
9-2	Int'Char Set	Japan	-
9-3	Kanji	ON	-
9-4	JIS/Shift-JIS	Shift JIS	-
10-3	ACK Timing (when USB and parallel IF are used)	Before BUSY	-

4.11. CT-S4000 Series

DIP Switch Setting

DSW No.	Function	Setting	Description
8	INIT (when serial interface is used)	OFF	Disabled

Memory Switch Setting

MSW No.	Function	Setting	Description
1-1	Power ON Info	Valid	-
1-2	Buffer Size	4K bytes	-
1-3	Busy Condition	Full	-
1-4	Receiving Error	Print ?	-
1-5	CR Mode	Ignored	-
1-7	DSR Signal (when serial interface is used)	Invalid	-
1-8	INIT Signal (when serial interface is used)	Invalid	-
2-2	Auto cutter operation	Valid	-
2-4	Full column print	WaitData	-
3-1	Auto Cutter	Valid	-
3-3	Parallel 31Pin (when USB and parallel IF are used)	Valid	-
3-7	CBM1000 Mode	Valid	-
3-8	Resume Open Err	Close	-
4-8	Forced partial	Invalid	-
5-2	Line Pitch	1/360	-
5-5	Power OFF notify	Not send	-
7-6	DMA Control	Valid	-
9-1	Code Page	Katakana	-
9-2	Int'Char Set	Japan	-
9-3	Kanji	Enabled	-
9-4	JIS/Shift-JIS	Shift JIS	-
10-3	ACK output timing (when USB and parallel IF are used)	Before BUSY	-

4.12. CT-S4500 Series

Memory Switch Setting

MSW No.	Function	Setting	Description
1-1	Power ON Info	Valid	-
1-2	Buffer Size	4K bytes	-
1-3	Busy Condition	Full	-
1-4	Receiving Error	Print ?	-
1-5	CR Mode	Ignored	-
1-7	DSR Signal (when serial interface is used)	Invalid	-
1-8	INIT Signal (when serial interface is used)	Invalid	-
2-2	Auto Cutter	Valid	-
2-4	Full Col Print	WaitData	-
3-1	Resume Ctrr Err	Valid	-
3-7	CBM1000 Mode	Valid	-
3-8	Resume Open Err	Close	-
4-8	Partial Only	Invalid	-
5-2	Line Pitch	1/360	-
6-1	Act. For Driver	Valid	-
7-6	DMA Control	Valid	-
8-4	Line Gap Reduce	Invalid	-
8-5	Reduced Char V/H	100% / 100%	-
9-1	Code Page	Katakana	-
9-2	Int'Char Set	Japan	-
9-4	Multi-Byte Char	SJIS:CP932(JPN)	-
13-6	Auto Reconnect (when Bluetooth I/F is used)	Invalid	-

4.13. PMU3300 Series

Memory Switch Setting





MSW No.	Function	Setting	Description
1-1	Power ON Info	Valid	-
1-2	Buffer Size	4K bytes	-
1-3	Busy Condition	Full	-
1-4	Receiving Error	Print ?	-
1-5	CR Mode	Ignored	-
1-7	DSR Signal (when serial interface is used)	Invalid	-
2-2	Auto Cutter	Valid	-
2-4	Full Col Print	WaitData	-
3-1	Resume Ctrr Err	Valid	-
3-7	CBM1000 Mode	Valid	-
3-8	Resume Open Err	Close	-
4-8	Partial Only	Invalid	-
5-2	Line Pitch	1/360	-
6-1	Act. For Driver	Valid	-
9-1	Code Page	Katakana	-
9-2	Int'Char Set	Japan	-
9-4	JIS/Sheft JIS	Shift JIS	-

5. Barcode scanner Setting

When using barcode scanner, barcode scanner must be set to OPOS specification.


5.1. SCN01-Z1D

Scan all the bar codes below from the top and change the settings.

	Start setting
	Change to USB VCOM
	Enable to identification code table of factory shipping
	End setting




5.2. SCN02-Z2D

Scan all the bar codes below from the top and change the settings.

	Set to OPOS mode
---	------------------

5.3. BC-NL3000U

Scan all the bar codes below from the top and change the settings.

 0006010	Start setting
 1100060	Change to USB VCOM
 0006000	End setting

CITIZEN POS for .NET DRIVER 1.14 Setup Guide

August 25, 2023 For Ver. 1.14.1.5

CITIZEN SYSTEMS JAPAN CO., LTD.

<https://csj.citizen.co.jp/>